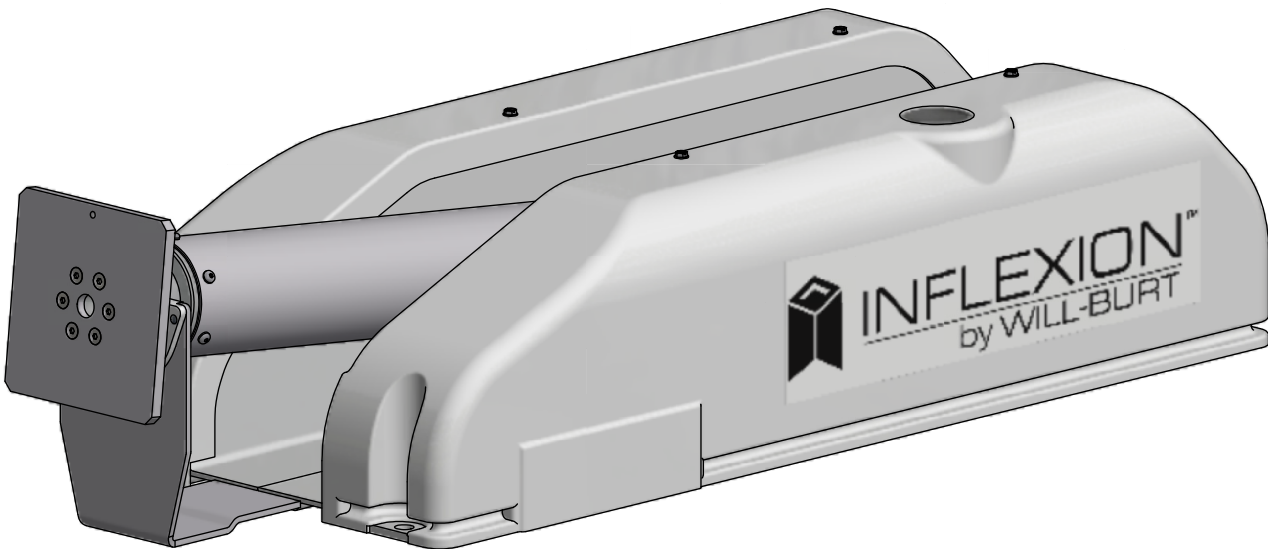


REVISION HISTORY				
ECN	REV	DESCRIPTION	DATE	APPROVED
13316	00	INITIAL RELEASE	8/4/2016	RCC



NOTE:  
 1 5246801 TO BE INSTALLED.

APPROX. WT:59.8 lbmass

THIRD ANGLE PROJECTION



**UNLESS OTHERWISE SPECIFIED DIMENSIONS ARE IN INCHES.**  
 TOLERANCES ON DECIMALS    ANGLES  
 0 = ± 0.030                      ± 1/2°  
 00 = ± 0.010  
 000 = ± 0.005  
 FRACTIONAL ± 1/64"  
 1. ALL INSIDE EDGES TO HAVE .005" TO .035" FILLETS.  
 2. ALL OUTSIDE EDGES TO HAVE .005" TO .015" CHAMFER OR RADIUS.  
 125°  
 ON ALL MACHINED SURFACES

**PROPRIETARY AND CONFIDENTIAL**  
 THE INFORMATION CONTAINED IN THIS DRAWING IS THE SOLE PROPERTY OF THE WILL-BURT COMPANY ANY REPRODUCTION IN PART OR WHOLE WITHOUT THE WRITTEN PERMISSION OF THE WILL-BURT COMPANY IS PROHIBITED.

**W3** AN EMPLOYEE OWNED COMPANY  
 WILL-BURT ORRVILLE, OH

TITLE  
**NS 1.0 INFLX RELAY  
 W/PLATFORM**

APPROVALS	DATE
DRAWN RCC	8/4/2016
CHECKED	

SIZE	DWG NO	REV
B	722077010	00
PN:	722077010	SHEET 1 OF 2