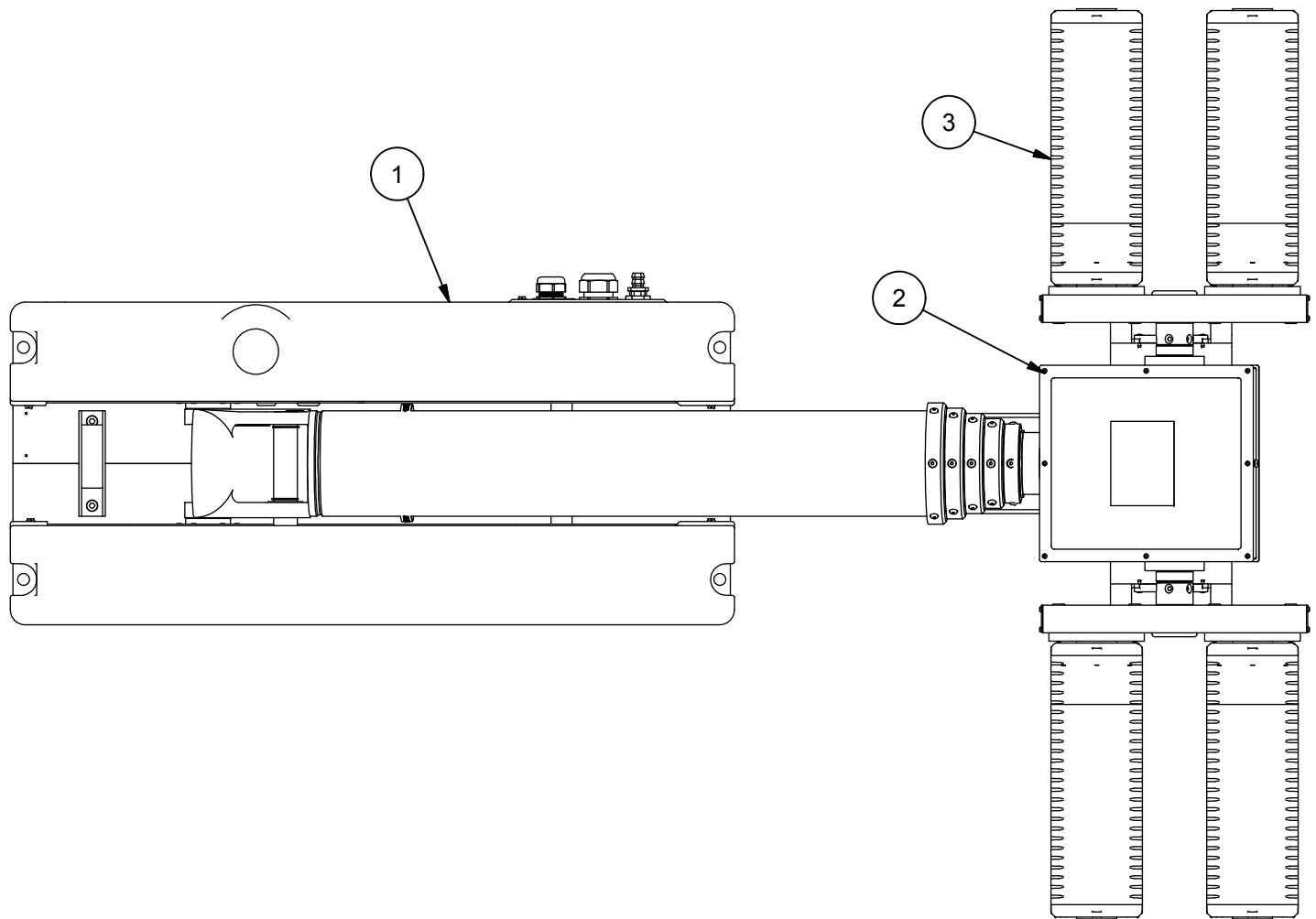


REVISION HISTORY				
ECN	REV	DESCRIPTION	DATE	APPROVED
13854	00	INITIAL RELEASE	12/22/2017	RCC



PARTS LIST			
ITEM	QTY	PART NUMBER	DESCRIPTION
1	1	4627603	BASE ASSEMBLY POWERLITE 10 FT CLR
2	1	4742501	RCP ASSEMBLY NSP STD
3	1	5048201	KIT, NSXL-200 4LIGHTS 500W 12-60VDC
4	1	4706703	LABEL KIT-CLEAR CE (Not Shown)
5	1	5400702	KIT, DC POWER FOR (4) NSXL-200 (640w) (Not Shown)
6	1	4807801	KIT, SHIPPING NSP (Not Shown)
7	1	WD-46276	Wiring Diagram (Not Shown)

NOTES:

- 1 INSTALLATION OF 5400702 IS TO BE DONE BY THE CUSTOMER
- 2 APPLY RTV #739 OR EQUAL TO ALL OPEN HOLES
- 3 SEE WIRING DIAGRAM WD-46276 FOR WIRING DETAILS
- 4 SET LIGHT BARS HOME POSITION PARALLEL TO BASE PLATE WHEN STOWED
- 5 APPLY LOCTITE #243 OR EQUAL TO ALL THREADS UNLESS OTHERWISE NOTED
- 6 APPLY A COAT OF SILICONE GREASE TO RCP MOTOR BORES PRIOR TO SHAFTS BEING INSTALLED
- 7 INSTALL GROUND WIRE ASSEMBLY TO BOARD AND RCP HOUSING

APPROX. WT:162.1 lbmass



UNLESS OTHERWISE SPECIFIED DIMENSIONS ARE IN INCHES.
 TOLERANCES ON DECIMALS ANGLES
 0 = ± 0.030 ± 1/2°
 00 = ± 0.010
 000 = ± 0.005
 FRACTIONAL ± 1/64"
 1. ALL INSIDE EDGES TO HAVE .005" TO .035" FILLETS.
 2. ALL OUTSIDE EDGES TO HAVE .005" TO .015" CHAMFER OR RADIUS.
 125° ON ALL MACHINED SURFACES

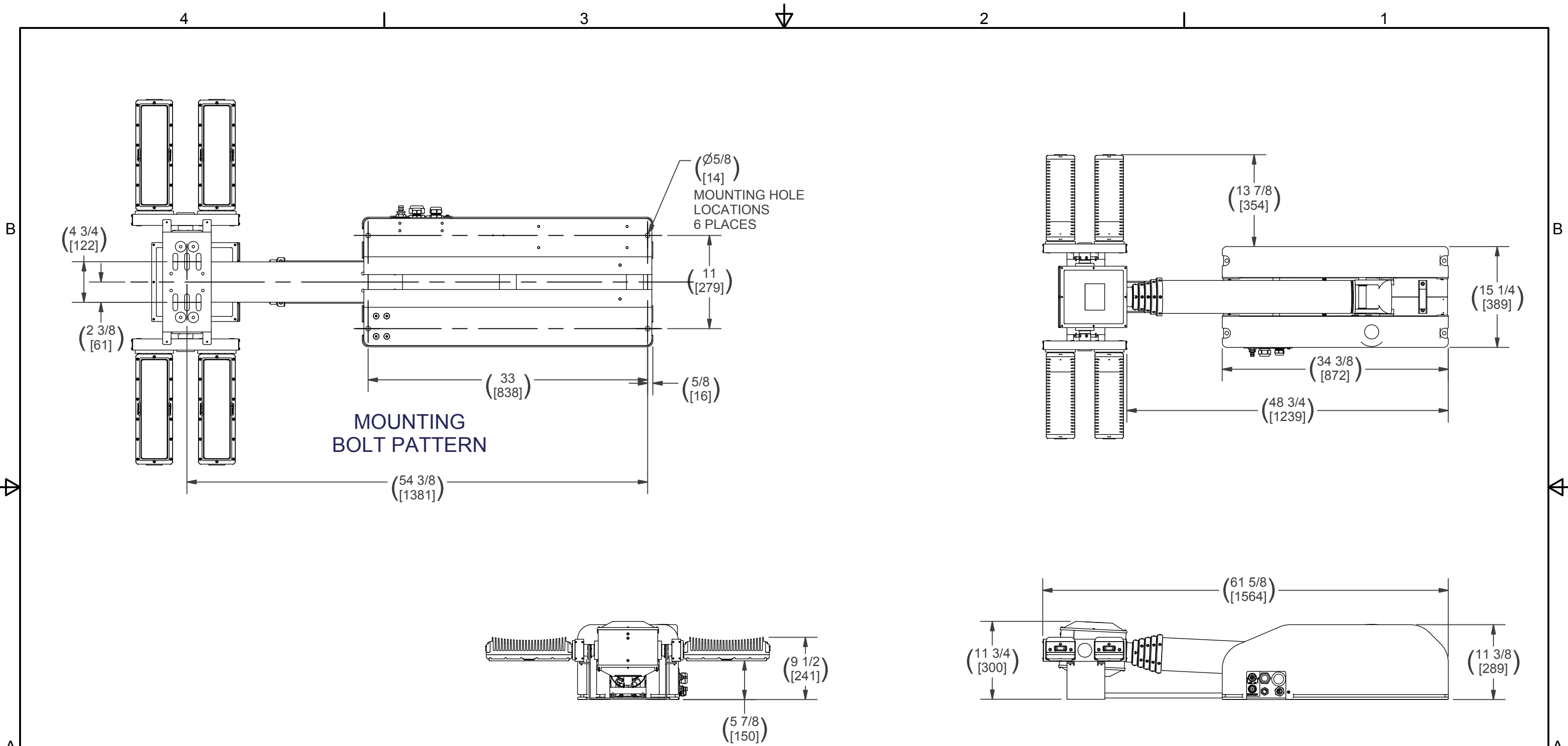
PROPRIETARY AND CONFIDENTIAL
 THE INFORMATION CONTAINED IN THIS DRAWING IS THE SOLE PROPERTY OF THE WILL-BURT COMPANY ANY REPRODUCTION IN PART OR WHOLE WITHOUT THE WRITTEN PERMISSION OF THE WILL-BURT COMPANY IS PROHIBITED.



TITLE
 NS 3.0 500 XL-200 12/60VDC
 120/240V-IN

APPROVALS	DATE
DRAWN RCC	12/22/2017
CHECKED	

SIZE	DWG NO	REV
B	721000100	00
PN: 721000100		SHEET 1 OF 2



MOUNTING BOLT PATTERN

ALTERNATE DIMENSIONS: MILLIMETERS IN BRACKETS

APPROX. WT: 162.1 lbmass

THIRD ANGLE PROJECTION



UNLESS OTHERWISE SPECIFIED DIMENSIONS ARE IN INCHES.
 TOLERANCES ON DECIMALS ANGLES
 0 = ± 0.030 ± 1/2°
 00 = ± 0.010
 000 = ± 0.005
 FRACTIONAL ± 1/64"
 1. ALL INSIDE EDGES TO HAVE .005" TO .035" FILLETS.
 2. ALL OUTSIDE EDGES TO HAVE .005" TO .015" CHAMFER OR RADIUS.
 $\sqrt[125]{}$ ON ALL MACHINED SURFACES

PROPRIETARY AND CONFIDENTIAL
 THE INFORMATION CONTAINED IN THIS DRAWING IS THE SOLE PROPERTY OF THE WILL-BURT COMPANY ANY REPRODUCTION IN PART OR WHOLE WITHOUT THE WRITTEN PERMISSION OF THE WILL-BURT COMPANY IS PROHIBITED.

WB AN EMPLOYEE OWNED COMPANY
 WILL-BURT ORRVILLE, OH

TITLE
NS 3.0 500 XL-200 12/60VDC 120/240V-IN

APPROVALS	DATE
DRAWN RCC	12/22/2017
CHECKED	

SIZE	DWG NO	REV
B	721000100	00
PN:	721000100	SHEET 2 OF 2