



RECHARGEABLE LIGHTING PRODUCTS



Watch
Product Video



Visit
Corporate Website



Download
Product Brochure



Watch
Corporate Video

The Will-Burt Company is the proud exclusive distributor of NightSearcher rechargeable lighting products. NightSearcher was established in 1989 and has provided the world with portable rechargeable lighting solutions that are reliable, durable, and easy to use. Applications of NightSearcher products range through multiple markets including fire, law enforcement, towing, security, construction, mining, and more. All products are powered by no maintenance lithium-ion batteries providing longevity and reliability in temperatures from -4° to 140°F, as well as containing a battery management system to protect against overcharging. While NightSearcher is located in the United Kingdom, Will-Burt will hold stock of core products within the United States.



NightSearcher professional products are carefully designed and manufactured to the highest standards to ensure the reliability and durability our customers need. This is why we offer a 3-year standard warranty on all manufacturing defects and 1-year warranty on all rechargeable batteries from the date of purchase.

Will-Burt will be adding additional rechargeable lighting products to our line. We have recently taken on Pi-Lit sequential warning lights – Smart Flares. Pi-Lit combines patented communications technology with brilliant LEDs and Li-Ion rechargeable batteries that provide a safe and reliable safety system for road side emergencies.



CONTENTS



SOLARIS DUO 40K..... 4-5



KANGASTAR 10K..... 16-18



MEGASTAR 20K..... 6-7



LIGHTWAVE 52019



SOLARIS PRO 16K..... 8-9



LIFEGUARD & SAFATEX RA20-21



TOWER PRO 5K..... 10-11



EXPLORER XPL-C.....22



WORKSTAR CONNECT..... 12-13



PANTHER XHP-X.....23



GALAXY PRO 6K..... 14-15



LED HAZARD WARNING LIGHTS..... 24-27

SOLARIS DUO 40K

Most powerful portable area light in the world

ESSENTIAL FEATURES

- High powered LEDs
- Portable and fast deployment
- 2 telescopic masts reaching up to 6.2 ft / 1.9m
- Swivel and tilting heads
- Built in stability legs for use on uneven ground
- Sturdy moulded insert to store parts inside
- Housed in highly robust IP67 polycarbonate case
- Battery status indicator
- Sturdy and stackable

Supplied with:

AC charger

Optional Accessories:

Vehicle charger: 5837501



Battery Status Indicator

High: Green | Medium: Amber | Low: Red

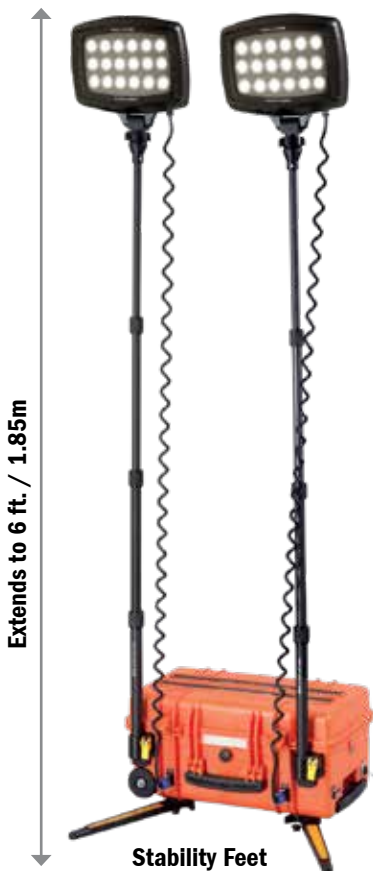
SPECIFICATIONS

	Solaris Duo 40K
Lumens	40,000 - 2 x 20,000 heads
Beam Distance	Up to 328 ft. / 100m
Run Time	3-24 hours
Mode	High / Medium / Low / Eco
Power Source	50Ah, 754.80Wh
Charging Time	7 hours 20 min
Dimensions	11 x 15 x 22.4 in. / 280 x 380 x 570mm
Weight	43.4 lb. / 19.7 kg
Code	5837701



Quick lock release

Best replacement for generator powered lights



Everything stores inside
IP67 Case

Extendable
handle and
wheels



MEGA STAR 20K

Rechargeable floodlight for remote locations

ESSENTIAL FEATURES

- IP65 waterproof polyethylene case
- 1 minute setup
- Full kits fits in waterproof bag
- Illuminating remote areas where lighting is crucial
- Durable all-weather construction
- Light and easy to carry with shoulder strap
- Additional power packs are available for longer runtimes
- Extends to 12 ft / 3.7 m

Supplied with:

Light Head | Tripod | Battery Pack | Shoulder Strap
Weatherproof Bag | AC Charger

Optional Accessories:

Additional power packs for longer run times: 5837401
Vehicle Charger: 5837501 | Ground pegs: 5837601

SPECIFICATIONS

	MegaStar 20K
Lumens	20,000
Beam Distance	Up to 164 ft. / 50m
Run Time	2-8 hours
Mode	High / Medium / Low / Eco
Power Source	14.8V 18Ah, 266.40Wh
Charging Time	7 hours 20 min
Ingress Protection	IP65
Dimensions	3 x 1.2 x 0.6 in. / 75 x 30 x 15mm
Weight	9.9 lb. / 9.5 kg
Code	5837301



Illuminates remote areas where lighting is not adequate



Entire kit is supplied in a weatherproof bag

Light Head | Tripod | Battery Pack
AC Charger Shoulder Strap
Weatherproof Bag



Red / Amber / Green



Light modes operated from battery pack



Stability Ground Pegs



Upgraded battery pack



Hook-on tripod bracket



Extends 12 ft / 3.7 m



4 light modes to choose from: high, medium, low, and eco

SOLARIS PRO 16K

The programmable LED floodlight with a 48 hours runtime!

ESSENTIAL FEATURES

- High powered LEDs
- Lightweight and portable
- Fast deployment
- Extends to 6 ft. / 1.85m with built in cable to avoid trip hazards
- Built in stability legs for use on uneven ground
- 180° Swivel and tilting light head
- Lightweight Lithium-Ion batteries
- Dual optics - Spot and wide beam
- Emergency light mode

Supplied with:

AC charger and shoulder strap

Optional Accessories:

Vehicle charger: 5837501

Ground pegs: 5837601

SPECIFICATIONS

	Solaris Pro 16K
Lumens	16,000
Beam Distance	Up to 1640 ft. / 500m
Run Time	2.25-48 hours
Mode	Boost (Search + Flood) / Search / Flood
Power Source	14.8V 18.2Ah, 269.36Wh
Charing Time	6 hours
Ingress Protection	IP65
Dimensions	20.4 x 6.1 x 8.7 in. 517 x 155 x 220mm
Weight	15.4 lb / 7 kg
Code	5837801



Lightweight for easy transportation



Compact size for storage



LCD programmable display

For selection of operation modes and programming a runtime of up to for 48 hours



Light mode & runtime digital selector



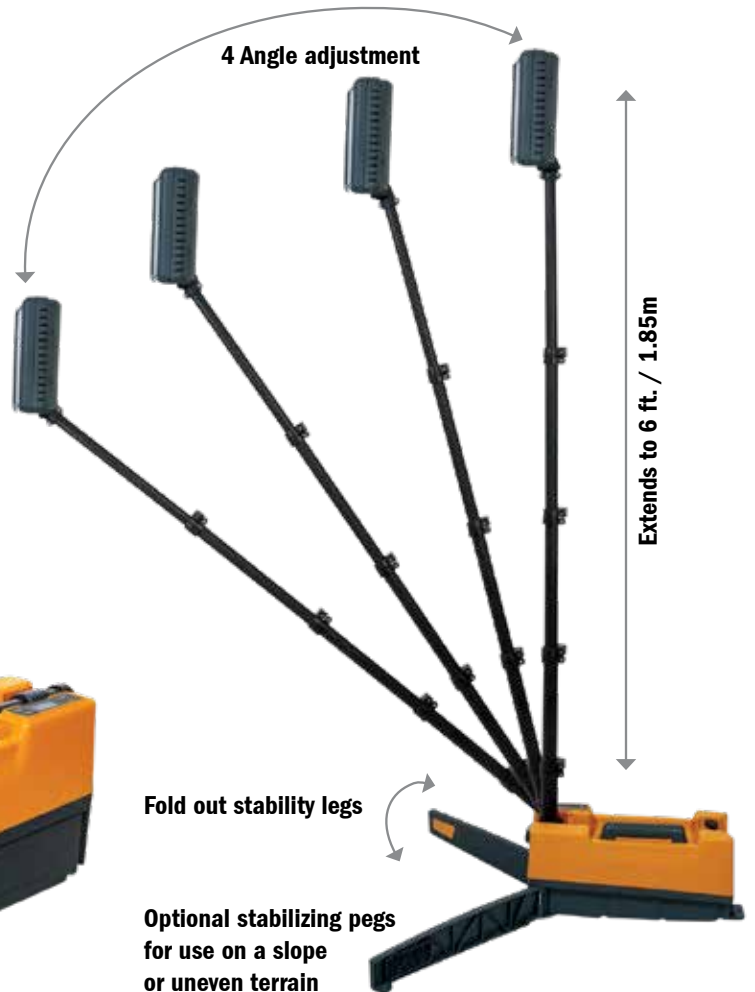
Battery status by color

2 Battery options available

Dual Optics
Spot and Wide Beam

Flood

Spot



TOWER PRO 5K

Portable, collapsible, and rechargeable AC floodlight

ESSENTIAL FEATURES

- Quick and easy setup
- Multi-angle rotational light
- Can be powered directly from AC Charger
- 2.2 ft / 0.66m when folded
- Tripod extends to 4.9 ft / 1.5m
- Robust housing
- Switch & brightness control panel
- Warm white and cool white light modes
- Battery charging indicator

Supplied with:

AC Charger | Carry Bag | Ground Spikes

SPECIFICATIONS

	Tower Pro 5K
Lumens	5,000
Beam Distance	Up to 295 ft. / 90m
Run Time	1-5 hours
Mode	High / Medium / Low
Power Source	7.4V 4000mAh, 29.6Wh
Charging Time	6 hours
Ingress Protection	IPX4
Dimensions	4.8 x 6.3 x 35 in. / 122 x 160 x 890mm
Weight	9.9 lb / 4.5 kg
Code	5837201



Up to 5,000 lumens of multi-angle rotational light



Built-in cable and charger wrapping system for tidy storage



Extends 4.9 ft / 1.5 m



Cool white beam



Warm white beam



Battery charging and status indicators with 6 hour charging time



Reversible ground spikes



WORKSTAR CONNECT

Work light designed to operate from rechargeable power tool batteries

ESSENTIAL FEATURES

- 3 light modes - high, medium, low
- Beam Distance up to 82 ft / 25m
- Run Time - up to 16 hours
- Powerful 2,500 lumens
- Tripod mountable
- Toughened glass lens
- IP54 and IK07 shock proof Rating
- 4 X Powerful magnetic feet
- Adjustable stand with hanging hook
- Operates from power tool batteries
- Compact, fold flat design
- USB power bank

Supplied with:

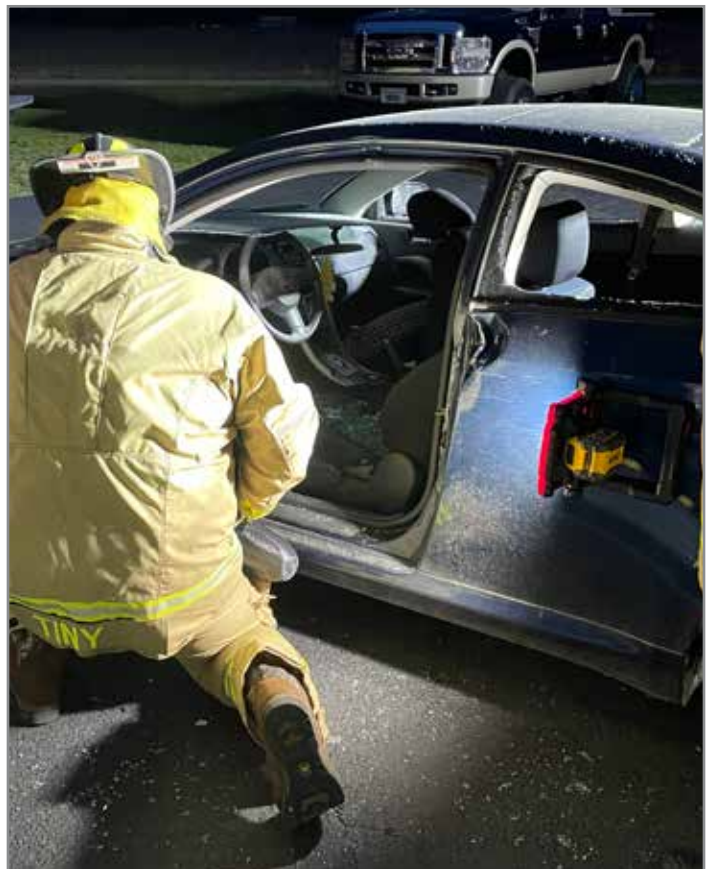
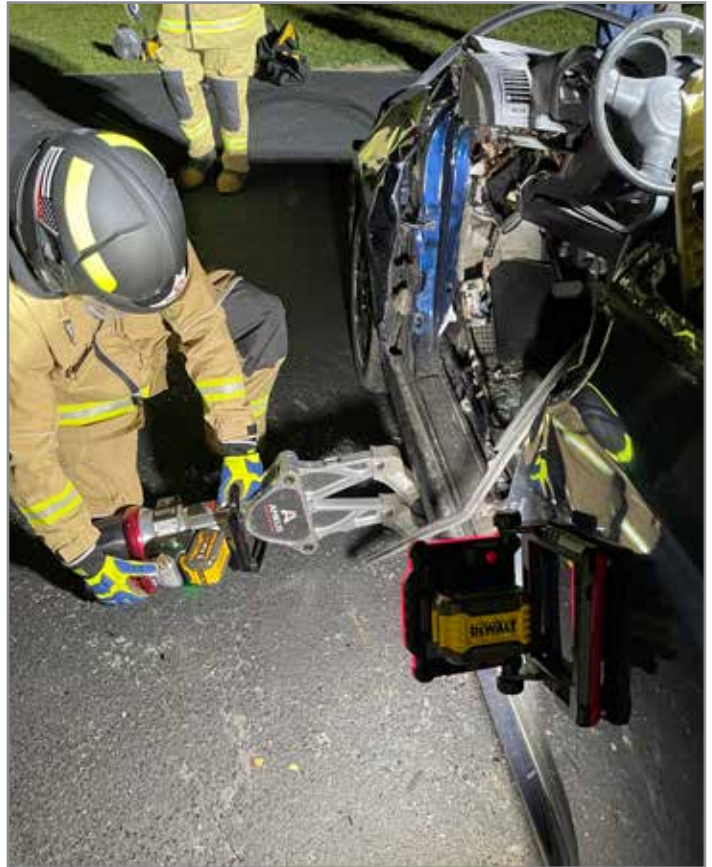
4 x Power Tool Adapters accepting the following battery brands: Black & Decker | Bosch | Makaita | Stanley | Dewalt | Porter | Milwaukee (14-21V batteries not included)

Optional Accessories:

2m Tripod: 5837101

SPECIFICATIONS

	WorkStar Connect
Lumens	2,500
Beam Distance	Up to 82 ft. / 25m
Run Time	2-16 hours (18-21V) battery
Mode	High / Medium / Low
Ingress Protection	IP54
Dimensions	8.9 x 3.5 x 13.4 in. / 225 x 90 x 340mm
Weight	2.2 lb. / 1 kg
Code	5847301



Ultra powerful magnetic base



BOSCH



BLACK & DECKER
STANLEY



MAKITA



MILWAUKEE
DEWALT



USB power bank charges your work light on the go



Hanging hook



4 Magnetic feet



Adjustable angle

GALAXY PRO-6K

6000 Lumens rechargeable floodlight, ideal for all environments

ESSENTIAL FEATURES

- Improved electronics for enhanced performance
- Rechargeable or powered directly from AC charger
- Drop tested from 8 ft. / 2.5m
- Designed for use in harsh, industrial locations
- Robust housing made from the toughest composite materials
- Charger storage compartment
- Lightweight - only 3.3 lb / 1.5kg
- IK07 Impact Protection

Supplied with:

AC charger

Optional Accessories:

2m Tripod: 5837101 | 3.5m Tripod: 5837001

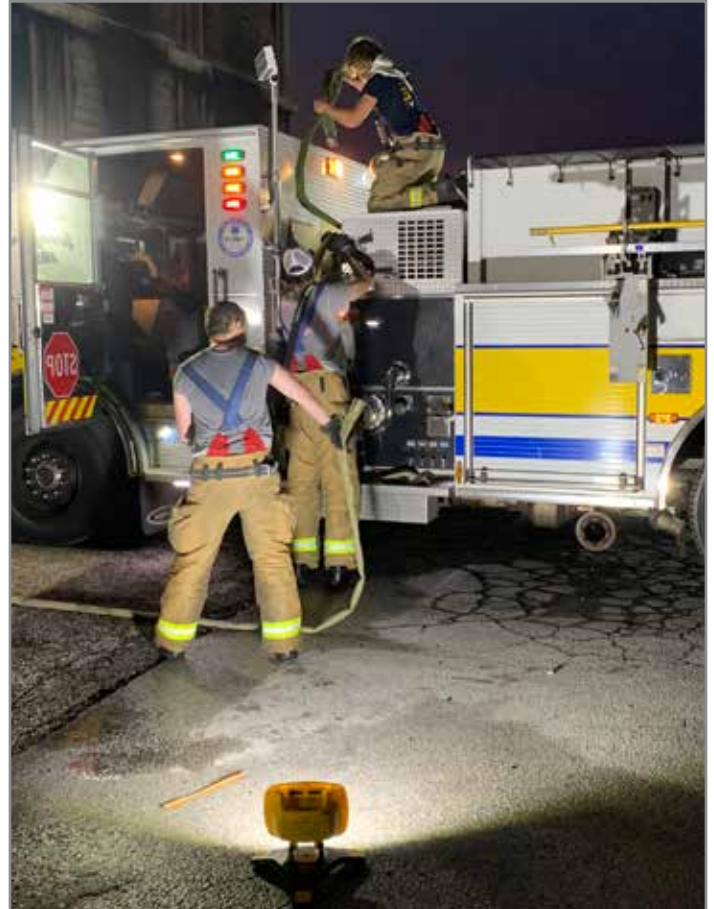
T-Bar Bracket: 5836801 | Vehicle Charger: 5836901

Set of 3 Magnetic Mounts: 5836601

Single Magnet Mount: 5836701

SPECIFICATIONS

	Galaxy Pro 6K
Lumens	6,000
Beam Distance	Up to 196 ft. / 60m
Run Time	2.5-60 hours
Mode	High / Medium / Low / Dimmable
Power Source	7.4V 13.2Ah, 97.68Wh
Charging Time	8 hours
Ingress Protection	IP54
Dimensions	12.2 x 13.8 x 11.2 in. / 310 x 350 x 285mm
Weight	3.3 lb. / 1.5 kg
Code	5836501



Improved electronics for enhanced performance

Optional T-Bar tripod - provides 12,000 lumens



Battery status indication



120° Adjustable tilting head

Folds flat to carry or easy storage



Hi-Vis reflective feet



196 ft. / 60 m beam



Water resistant IP54

KANGASTAR 10K

Professional, Rechargeable LED Work Light

ESSENTIAL FEATURES

- 10,000 lumen Anti-Glare Scene Light
- Powered by AC, tool battery or rechargeable battery
- Optional lithium iron rechargeable battery
- Integrated stand, handle, and hanging hooks
- Brightness Control
- USB Output
- Designed for Harsh Environments
- IP 65 rated
- Rugged / Tough Aluminum Housing
- Ultra-Wide 330 ft / 100m Beam

Supplied with:

3 in 1 Battery Adapter (DeWalt, Milwaukee, Metabo)

Optional Accessories:

AC Adapter / Battery Charger: 5838801
 Rechargeable 19.2 6Ah 115.2Wh LiFe PO₄
 Battery: 5838701 | 4 in 1 Battery Adapter
 (Panasonic, Makita, Bosch, Hikoki): 5838601
 3.5m Tripod: 5837001

SPECIFICATIONS

	Kanga Lite 10K
Lumens	10,000
Beam Distance	Up to 328 ft. / 100m
Run Time	1.5 - 7.5 hours (6Ah battery)
Mode	20% / 40% / 60% / 80% / 100%
Material	Aluminum, PC, POM, Silicon Rubber
Charging Time	2 hours
Ingress Protection	IP65
Dimensions	10.4 x 5.7 x 14.2 in. / 265 x 145 x 360mm
Weight	6.6 lb. / 3 kg
Code	5838501



Designed for harsh environments with rugged and tough IP65 rated enclosure



Supplied
3 in 1 Battery Adapter
(DeWalt, Milwaukee, Metabo)



Optional
4 in 1 Battery Adapter (Bosch, Panasonic, Makita, Hikoki)
Product #: 5838601



Optional
Rechargeable Battery
Product #: 5838701



Optional
AC Adapter / Battery Charger
Product #: 5838801



Powered by 7 of the most popular power tool batteries



Ultra-Wide 330 ft / 100m Beam



Optional 11.5 ft. / 3.5m Tripod
Product #: 5837001



Hanging hooks for convenient operation



Convex lens for improved light beam



Brightness Control

USB power bank
charges your device

On/Off Button

Battery





Brighter and higher quality ultra-wide beam of light up to 330 ft / 100m with COB LED



Portable and cable free providing complete flexibility and continuous light

19.2 V 6Ah 115.2Wh

Rubber coating shockproof

IP65

LiFePO₄ batteries

- Super Stability
No Fire
No Explosion
- 2000+ cycle
- Long lifespan

The shockproof rubber bumper and stable universal LiFePO₄ battery eliminates fires and explosions

LIGHT WAVE 520

Rechargeable, Spot & Flood beam with ON/OFF wave sensor

ESSENTIAL FEATURES

- 520 lumen with 460 ft / 140m beam
- Dimmable on all light modes
- Spot to flood beam
- Battery status indicator
- Lightweight - only 96g
- Helmet mountable with clips
- Adjustable non-slip head straps

Supplied with:

USB-C charging cable

Optional Accessories:

Vehicle Charger: 5837901

AC USB Charging Adapter: 5872801

SPECIFICATIONS

	Light Wave 520
Lumens	520
Beam Distance	Up to 460 ft. / 140m
Run Time	2.5-5 hours
Mode	Spot + Flood / Flood / Spot
Power Source	3.7V 1800Ah, 6.66Wh
Charging Time	3 hours
Ingress Protection	IP44
Dimensions	2.6 x 1.6 x 1.9 in. / 65 x 40 x 47mm
Weight	0.2 lb. / 96 g
Code	5838901



2 Ways to turn ON+OFF: Manual switch or Wave

Ideal when hands are dirty, wearing gloves, fishing or climbing



Spot Beam



Flood Beam

SAFATEX RA

Hazardous Area Right Angled Hand Torch

ESSENTIAL FEATURES

- 325 Lumens with 951 ft / 290m beam
- Runs up to 13 hours
- High powered LED - CREE XP-G2
- Lockable battery compartment
- Robust polycarbonate housing
- Rubber grip and head for durability
- Pocket/Belt stainless steel clip
- Drop proof up to 3.2 ft / 1m
- Easy to use, maintenance free
- Gas pressure release valve
- Powered by 4 x AA batteries (not included)

Certifications:

- Class I DIV 1&2 GRP ABCD
Class II DIV 1&2 GRP EFG
CLASS III
Temp Code: T4 IP54
File Number: 261379
- ATEX: Ex I M1 Ex ia I Ma
Ex II 1G Ex ia IIC T4 Ga
Sira 15ATEX2166X
- IECEx: GAS:Ex ia IIC T4 Ga
Mining: Ex ia Ma
IECEx SIR 15.0062X

SPECIFICATIONS

	Safatex RA
Lumens	High: 325 lumens Low: 140 lumens
Beam Distance	High: 951 ft. / 290m Low: 604 ft. / 184m
Run Time	High: 6.5 hours Low: 13 hours
Ingress Protection	IP54
Dimensions	7.2 x 2.7 x 2.5 in. / 183 x 69 x 63 mm
Weight	.55 lbs. / 250 g
Code	5873201



Robust polycarbonate housing for external durability



Handy pocket clip provides hands-free operation

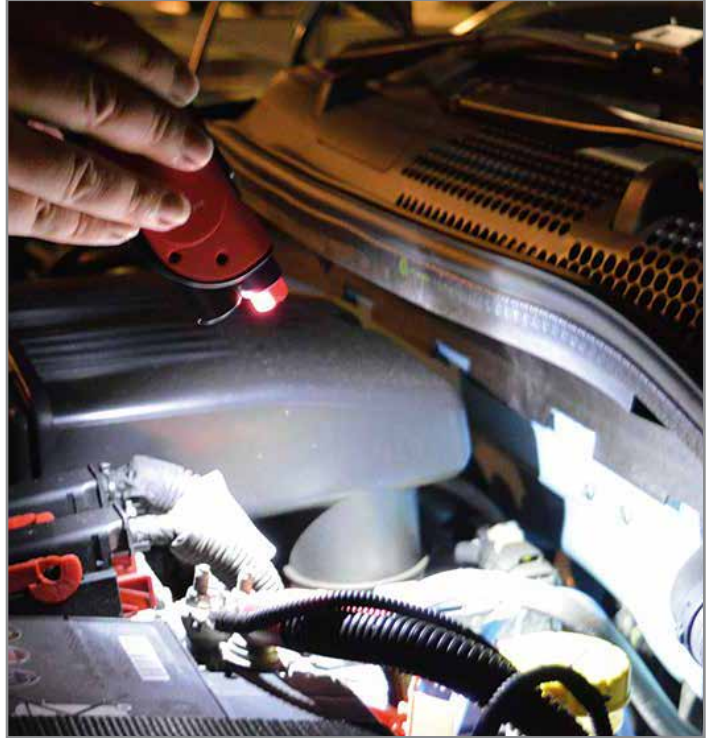
LIFEGUARD

Multifunctional Safety Light

ESSENTIAL FEATURES

- 5 In 1 Emergency Kit: Wide Floodlight | Narrow Torch | Red Flashing Emergency Light | Window Breaker | Belt Cutter
- 200 Lumens with 16.4 ft / 5m beam
- Runs up to 5 hours
- LED flood beam and inspection torch
- Ultra bright 2W COB LED strip
- Strong magnetic side
- Resilient polycarbonate and ABS construction

Supplied with:
3 x AAA batteries



Wide Floodlight



Narrow Torch



Red Flashing Emergency Light



Window Breaker

SPECIFICATIONS

	Lifeguard
Lumens	Floodlight: 200 lumens Torch: 70 lumens Flashing: 200 lumens
Beam Distance	16.4 ft / 5 m
Run Time	Floodlight: 2.5 hours Torch: 3 hours Flashing: 5 hours
Dimensions	6.2 x 1.9 in. / 158 x 47.3 mm
Weight	.28 lbs. / 127 g
Code	5875101



Belt Cutter



Strong magnetic side

EXPLORER XPL-C

Wall or vehicle mounted rechargeable flashlight designed for professionals

ESSENTIAL FEATURES

- 1,100 Lumens with 1968 ft / 600m beam
- Rechargeable lithium battery
- Type III hard anodised aluminum housing
- Powerful long spot beam
- Tail end button - designed for tactical use
- Battery charging indicator
- Textured body for secure grip
- IK07 shock proof
- Aircraft grade aluminium
- Ideal for domestic, security, and emergency use

Supplied with:

Li-ion Battery | Charging Station | Red Cone
USB-C Charging Cable

Optional Accessories:

Vehicle Charger: 5873901

AC USB Charging Adapter: 5872801



Supplied with Red Cone for signalling

SPECIFICATIONS

	Explorer XPL-C
Lumens	1,100
Beam Distance	Up to 1968 ft. / 600m
Run Time	1-12 hours
Mode	High / Low / Flashing / SOS
Power Source	3.7V 2200Ah, 8.14Wh
Charging Time	6 hours
Ingress Protection	IP65
Dimensions	4.7 x 7.5 x 2.75 in. / 120 x 190 x 70mm
Weight	0.62 lb. / 280 g
Code	5872701



PANTHER XHP-X

The searchlight chosen by professionals

ESSENTIAL FEATURES

- 1,800 lumens with long distance 3,280 ft / 1000m beam
- Lightweight design
- Rechargeable lithium battery
- Robust polyethylene construction
- Virtually unbreakable casing
- Unique deep dish reflector
- Adjustable stand
- Battery charging indicator
- Parabolic reflector enables maximum distance to lumen ratio



Supplied with:

AC charger | Adjustable Stand | Shoulder Strap

Optional Accessories:

Vehicle/wall mounting bracket: 5838001

Vehicle Charger: 5836901

SPECIFICATIONS

	Panther XHP-X
Lumens	1,800
Beam Distance	Up to 3,280 ft. / 1000m
Run Time	3-8 hours
Mode	High / Low
Power Source	7.4V 4.4Ah, 32.56Wh
Charging Time	9 hours
Ingress Protection	IP54
Dimensions	10.2 x 5.9 x 7.1 in. / 260 x 150 x 180mm
Weight	2.2 lb. / 1 kg
Code	5837901



Virtually unbreakable casing

Adjustable stand

Shoulder strap included

PI-LIT SMART FLARES

Sequential LED Hazard Warning Lights

ESSENTIAL FEATURES

- Automatic synchronization of lights with no programming
- Rapid Deployment System automatically turns on lights when removed from carrying case
- Tilt sensor directs light output optimizing driver awareness
- Mode Memory saves light pattern, deployment order and activation settings for next operation
- Pair Mode syncs single or multiple lights
- Battery status check with push of a button
- 20+ hour runtime and 6 hour charge time with Lithium-ion rechargeable battery
- IP66 water and dust rating
- Withstands weights up to 30,000 lbs.
- Available in 6 and 10 packs with orange, blue, or red flares
- 2-Year warranty

Supplied with:

Carrying case | DC 12/24V Vehicle Charger | AC 110/240V Wall Charger

Optional Accessories:

Cone mount (6 Pack): 5873801 | Cone mount (10 Pack): 5873701

SPECIFICATIONS

Pi-Lit Smart Flares		
Run Time	20+ hour runtime (flash pattern dependent)	
Mode	4 flash patterns: 2 sequential, 1 simultaneous, 1 steady-burn	
Charging Time	6 hours from a completely depleted battery	
Ingress Protection	IP66	
Dimensions	Flare: 4.25 x 3.5 x 1 in. / 108 x 89 x 25.4mm	
Weight	Flare: .5 lbs. / .02 kg	
Code	Blue 6 Pack	5873601
	Blue 10 Pack	5873501
	Orange 6 Pack	5873401
	Orange 10 Pack	5873301
	Red 6 Pack	5891001
	Red 10 Pack	5890901



Orange



Blue



Red



Magnetic Cone Adapter securely mounts single or multiple flares on top or both sides of the cone.



Smart Sequential Road Flares safely alert traffic around the scene with highly visible LEDs from up to 3,281 ft. / 1,000m



Orange



Blue



Red



PULSAR PRO

LED Hazard Warning Lights

ESSENTIAL FEATURES

- Shock resistant plastic housing with magnetic back
- Waterproof up to 3.28 ft / 1 m
- Visible from over 3,280 ft / 1 km
- Crushproof up to 6,000 lbs. / 1361 kg
- Floats in water
- 10 light modes, including white torch setting
- Runtime of up to 60 hours
- Working Temperature: -40° to 60°C

Supplied with:

AC Adapter | Car Charger | Carrying Case

Optional Accessories:

Cone Mount: 5838401



Optional cone mount
Product #: 5838401

SPECIFICATIONS

	Pulsar Pro	
Ingress Protection	IP67	
Dimensions	Case: 380 x 70 x 370 mm / 15 x 2.76 x 14.6 in. Car Charger: 24 x 110 mm ø / .9 x 4.3 in.	
Weight	6.4 lb. / 2.9 Kg	
Charging Time	10 Hours	
Power Source	700mAh 3.7V 2.59Wh	
Code	Red 5 Pack	5875201
	Blue 5 Pack	5875301



Virtually indestructible with shock resistant plastic housing

Run times for light modes:			
Rotate	9 Hours	Quad Flash	9 Hours
Single Blink	60 Hours	Alternating Blinks	9 Hours
SOS Rescue	14 Hours	Steady on High	5 Hours
Steady on Low	35 Hours	2 LED Lights	28 Hours
4 LED Lights	18 Hours	White Torch Mode	8 Hours

Millicandela (MCD)	
Red	7,000
Blue	6,000



Central white work light ideal for emergencies

SINGLE PULSAR-AAA

LED Hazard Warning Lights

ESSENTIAL FEATURES

- Shockproof and magnetic housing
- Extremely robust and compact
- IP67 weatherproof rating
- Withstands weights up to 2,000 lbs.
- Fold away hanging hook

Supplied with:

3 x AAA batteries

Optional Accessories:

Cone Mount: 5837101



**Optional cone mount:
Product #: 5838401**

**Fold away
hanging hook**

SPECIFICATIONS

	Pulsar-AAA	
Run Time	Up to 240 hours depending on mode	
Ingress Protection	IP67	
Dimensions	1.3 x 4.3 in. / 34 x 110mm	
Weight	.38 lb. / 170 g	
Code	Red	5847401
	Blue	5847501
	Green	5847601
	Yellow	5847701

Run times for light modes:			
Rotate	52 Hours	Quad Flash	120 Hours
Single Blink	240 Hours	Alternating Blinks	18 Hours
SOS Rescue	22 Hours	Steady on High	10 Hours
Steady on Low	25 Hours	2 LED Lights	52 Hours
4 LED Lights	25 Hours	White Torch Mode	60 Hours

Millicandela (MCD)	
Red	6,000
Blue	11,000
Green	7,000
Yellow	7,500

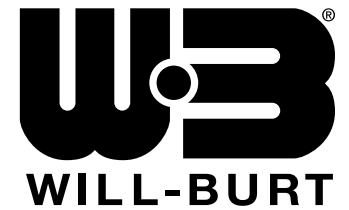


360° Illumination - visible from over 3,280 ft / 1 km.



Crushproof up to 2,000 lbs / 907 kg.

CONTACT YOUR SALES REPRESENTATIVE TODAY



Contact Us
Complete a Contact Form

WILL-BURT NORTH AMERICA
WORLD HEADQUARTERS

401 Collins Boulevard, Orrville, OH USA 44667
Telephone: +1 330 682 7015
Mast Customer Service: +1 330 684 4000
Fax: +1 330 684 1190
Email: info@willburt.com

INTEGRATED TOWER SYSTEMS
A WILL-BURT COMPANY

2703 Dawson Road, Tulsa, OK 74110
Telephone: +1 800 850 8535
Fax: +1 918 749 8537
Email: programs@itstowers.com

WILL-BURT
GERMANY

Fischergasse 25
D-91344 Waischenfeld
Germany
Telephone: +49 9202 180
Fax: +49 9202 1811 / Email: info@willburt.com

WILL-BURT ASIA
SINGAPORE SALES OFFICE

1 Fullerton Road, #02-01 One Fullerton,
Singapore 049213
Telephone: +65 6832 5689
Fax: +65 6722 0664 / Email: info@willburt.com

WILL-BURT
UNITED KINGDOM

Unit 5b, Station Approach
Four Marks, Alton Hampshire,
GU34 5HN, United Kingdom
Telephone: +44 (0) 1403 265532
Fax: +44 (0) 1403 259072 / Email: info@willburt.com

WILL-BURT
TURKIYE

Ahi Evran OSB Mahallesi,
Nahcivan Caddesi, No: 8/2,
Sincan, Ankara 06935
Email: info@willburt.com

The Will-Burt Company, headquartered in Orrville, Ohio, USA, is the world's premier manufacturer of mobile telescoping masts, towers and pan and tilt positioners. We offer virtually every mobile payload elevation and integration solution for defense, government, first responders, cellular and mobile, broadcast, energy production and other markets. Will-Burt also offers contract manufacturing, metal fabrication, powder-coating, and rapid prototyping services. Will-Burt is an international company with offices and manufacturing in the USA, England, and Germany along with offices in Singapore and a joint venture in Turkey. All Will-Burt Company manufacturing locations are backed by a certified ISO 9001:2015 Quality Management System. Incorporated in 1918, Will-Burt is 100% employee-owned and is classified as a small business.