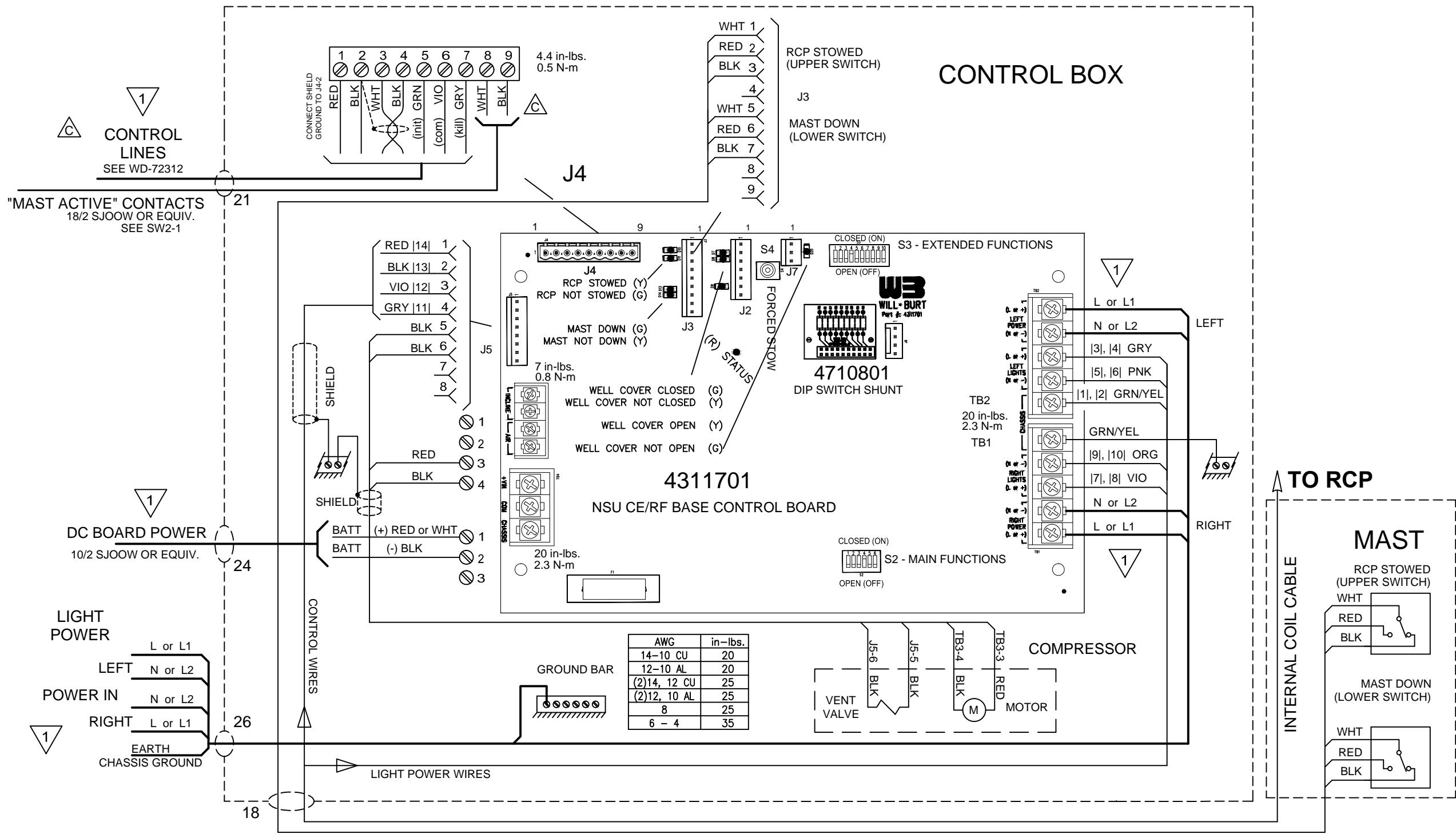


REVISIONS				
ECN	REV	DESCRIPTION	DATE	BY/APPVL
11507	00	INITIAL RELEASE	03-07-13	DJB/JA
11808	A	ADD WIRING DETAILS FOR SIGNAL SHIELDS	10-03-13	DJB/JLK
12261	B	UPDATE S3 FUNCTION TABLE FOR 7.3 SOFTWARE	06-25-14	DJB/JLK
12711	C	UPDATE CONTROLLER WIRING TO J4, SJ CABLE TO DC IN	05-08-15	DJB/JLK

NOTES

1. CUSTOMER CONNECTIONS



1
CONTROL LINES
SEE WD-72312

"MAST ACTIVE" CONTACTS
18/2 SJOOW OR EQUIV.
SEE SW2-1

1
DC BOARD POWER
10/2 SJOOW OR EQUIV.

1
LIGHT POWER
LEFT N or L2
RIGHT L or L1
EARTH CHASSIS GROUND

AWG	in-lbs.
14-10 CU	20
12-10 AL	20
(2)14, 12 CU	25
(2)12, 10 AL	25
8	25
6 - 4	35

BASE DIP SWITCH S2: MAIN FUNCTIONS

POS	OFF (OPEN)	ON (CLOSED)
1	J4 8,9 CLOSED WHEN NESTED	J4 8,9 OPEN WHEN NESTED
2	NFPA MODE	STANDARD
3	RCP	NO RCP
4	ROOF MOUNT	VERTICAL
5	UNUSED	UNUSED
6	NORMAL	DO NOT USE

BASE DIP SWITCH S3: EXTENDED FUNCTIONS

POS	OFF (OPEN)	ON (CLOSED)
1	NO D-TEC	D-TEC PRESENT
2	NO WELL COVER	WELL COVER
4	-	DEFAULT
8	-	+5 SEC. UP TO RCP ACTIVE
9	-	+10 SEC. UP TO RCP ACTIVE
3, 5-7, 10	- NOT USED	

MATERIAL
NSC VERT.DWG

FINISH

UNLESS OTHERWISE SPECIFIED DIMENSIONS ARE IN INCHES

TOLERANCES ON:
DECIMALS ANGLES
0 = ± 1/2"
00 = ±
000 = ±

FRACTIONS ±

BREAK ALL SHARP CORNERS
7/25 ON ALL MACHINED SURFACES

THIS DOCUMENT CONTAINS PROPRIETARY INFORMATION AND SHALL NOT BE USED OR REPRODUCED OR ITS CONTENTS DISCLOSED IN WHOLE OR IN PART, WITHOUT THE PRIOR WRITTEN CONSENT OF THE WILL-BURT COMPANY.

FOR LOGISTICAL SUPPORT ONLY

SIGNATURE DATE
DR. BY DJB -
CK. BY -
APP. BY -

WILL-BURT AN EMPLOYEE OWNED COMPANY
ORRVILLE, OHIO

NSC CE VERTICAL SIDE MOUNT WITH 4311701-CE/RF CONTROL BOX WIRING

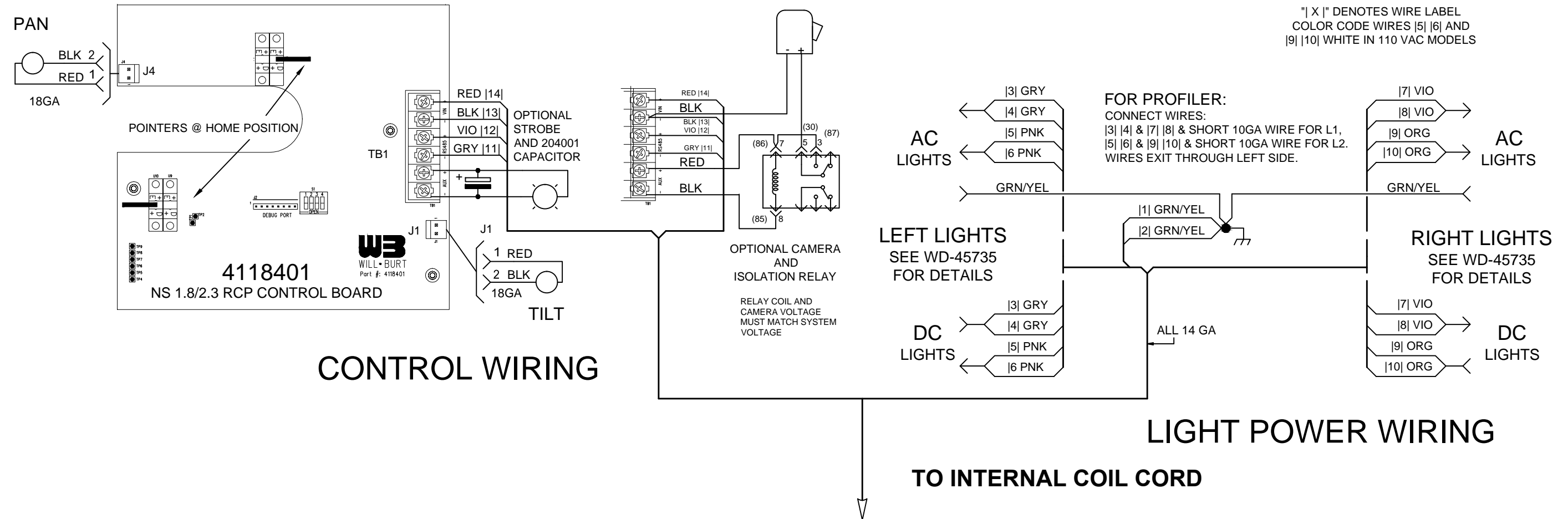
SIZE **B** DWG. No. **WD-87050**

SCALE NTS SHEET 1 OF 2

REVISIONS				
ECN	REV	DESCRIPTION	DATE	BY/APPVL
11507	00	INITIAL RELEASE	03-07-13	DJB/JA
11808	A	ADD WIRING DETAILS FOR SIGNAL SHIELDS	10-03-13	DJB/JLK
12261	B	UPDATE S3 FUNCTION TABLE FOR 7.3 SOFTWARE	06-25-14	DJB/JLK
12711	C	UPDATE CONTROLLER WIRING TO J4, SJ CABLE TO DC IN	05-08-15	DJB/JLK

RCP DIP SWITCH S1

POS	OPEN	CLOSED
1	STOP ON FAULT	STOW ON FAULT
2	RCP	-
3	STOW WHILE LOWERING	STOW BEFORE LOWERING
4	UNUSED	UNUSED



MATERIAL NSC VERT.DWG	UNLESS OTHERWISE SPECIFIED DIMENSIONS ARE IN INCHES TOLERANCES ON: DECIMALS ANGLES 0 = ± ± 1/2" 00 = ± 000 = ±	THIS DOCUMENT CONTAINS PROPRIETARY INFORMATION AND SHALL NOT BE USED OR REPRODUCED OR ITS CONTENTS DISCLOSED IN WHOLE OR IN PART, WITHOUT THE PRIOR WRITTEN CONSENT OF THE WILL-BURT COMPANY.	WB WILL-BURT AN EMPLOYEE OWNED COMPANY ORRVILLE, OHIO
FINISH	FRACTIONS ± BREAK ALL SHARP CORNERS 7/32" ON ALL MACHINED SURFACES	FOR LOGISTICAL SUPPORT ONLY SIGNATURE DATE DR. BY DJB - CK. BY - - APP. BY - -	NSC CE VERTICAL SIDE MOUNT WITH 4311701-CE/RF CONTROL RCP WIRING
		SIZE B DWG. No. WD-87040	
		SCALE NTS	SHEET 2 OF 2