



CUSTOMIZABLE MOBILE AND FIXED SHELTERS



When mission success depends on rapid deployment, security, and reliability, Will-Burt Integration's Aluma Tower all-aluminum shelters deliver unmatched performance for defense and disaster recovery operations. Engineered to meet the rigorous demands of military and emergency management professionals, our shelters are purpose-designed and built to your exact specifications—ensuring you have the flexibility and adaptability needed for any scenario.



Whether supporting secure communications in defense environments or providing critical infrastructure for FEMA and disaster response teams, Aluma Tower shelters are trusted worldwide. Together with our partners, we can offer advanced features such as cell signal blocking for secure operations, SCIF-level (ICD-705) acoustic protection and robust MIL-STD compliance. Lightweight, corrosion-resistant, and highly insulated, each shelter is constructed with premium materials and tested for reliability in the most challenging conditions. With proven deployments across military and emergency management agencies, Aluma Tower shelters stand ready to meet your mission—wherever and whenever you need them.

How we build them:

Our shelters are fabricated using 6061-T6 aluminum box tube wall studs, sheet skins, and custom aluminum corner post extrusions. The finished shell is double insulated (18R rating) with both foam insulation boards and foil-backed double bubble wrap. We finish the interior walls with bright white Fiberglass Reinforced Plastic (FRP) panels and anodized aluminum trim. A military-grade 3-point roller locking latch comes standard on all shelter doors, as well as several 120VAC receptacles, a shore power inlet, Square D electric breaker box system, and fluorescent lighting. The shelter exterior is painted white with a high-quality, automotive-grade, two-part paint system; other colors and types are available upon request, including CARC paint.

Aluma Tower Aluminum Shelters: Critical Features

- **Flexible & Customizable:** Purpose-designed and built to meet your specific operational requirements
- **Military & Emergency Proven:** Trusted by defense agencies and FEMA for secure, reliable deployments worldwide
- **Cell Signal Blocking:** Enhanced security for sensitive environments and operations
- **SCIF-Level Security Available:** Meets ICD-705 standards for acoustic protection and robust MIL-STD compliance
- **All-Aluminum Construction:** Lightweight, corrosion-resistant, and built for durability in harsh conditions
- **High Insulation (R18):** Superior temperature control for comfort and equipment protection
- **MIL-STD Compliant & Tested:** Designed and tested to meet strict military standards, including the S510 unit
- **Complete Infrastructure:** Can be equipped with HVAC, power systems, and robust transformer/rack options for turnkey deployment



TABLE OF CONTENTS



4

S6 TRAILER TOWER WITH SHELTER



5

S8 HYBRID TRAILER TOWER WITH SHELTER



6

S8S SKID TOWER WITH SHELTER



7

S510 TRAILER TOWER WITH SHELTER



8

S812 TRAILER TOWER WITH SHELTER



9

S816 TRAILER TOWER WITH SHELTER



10-11

OPTIONS AND ACCESSORIES





S6 TRAILER TOWER WITH SHELTER

The S6 telecom shelter mobile platform is our economical solution for applications requiring a trailer-mounted tower system.

Our S6 trailer-mounted tower is the smallest shelter vehicle-mounted tower in our portfolio. As with all of our shelters, it offers a solidly built, portable shelter on a trailer with a pivoting mobile lattice tower on top. Although it is smaller, it comes with a plethora of options, including custom electrical systems and equipment racks. Since it is smaller and lightweight, it can be towed by most vehicles equipped with class 4 hitches.

Essential Features

- The mobile shelter measures 76 in [193 cm] W x 60 in [152.40 cm] L x 84 in [213.36 cm] H
- The S6 is the smallest of our telecom shelter sizes, it has ample room for 1 to 2 standard-sized equipment racks and all the functionality and accessories available as the larger systems, including HVAC systems, generators, and electrical systems
- It is lightweight enough to be towed by most trucks, while still providing a shelter enclosure to house your communications equipment. The S6 makes for a simple, lightweight trailer-mounted mast mobile platform
- A range of guyed towers from 25 ft [7.62 m] to 100 ft [30.48 m] are available with this model, including our extra-extra-heavy-duty version [T-50XXHD]



S8 HYBRID TRAILER TOWER WITH SHELTER

The S8 Hybrid mobile portable communication tower (COW) combines the S8 shelter with S812 shelter chassis, providing an additional 4 ft. of trailer deck space for accessories and equipment.

This transportable tower system can be outfitted with a wide array of accessories including Motorola's R56 Grounding System, large diesel generators, custom fuel cells (including underbody), SMART technology, bunk beds, windows, equipment racks, and numerous others.

Essential Features

- The shelter can house more than four equipment racks. It measures 8 ft (2.4 m) W x 8 ft (2.4 m) L x 7.8 ft (2.38 m) H
- The S812 trailer chassis combined with S8 shelter provides an additional 4 ft (1.2 m) of deck space at the front of the shelter compared to our standard model, for a total of 8 ft (2.4 m) W of 12 ft (3.6 m) L in deck space.
- The unit has a ground clearance of approximately 20 in (50.8 cm)
- Telescopic mast and tower options include any of our unguyed models to make this a self-supporting tower system or cell trailer tower
- With a wide array of accessories and options available, this unit can be outfitted to meet any of your requirements for the perfect communications tower trailer (cell-on-wheels, COW)
- We recommend nothing smaller than a ¾ ton pickup for towing these mobile tower unit systems



S8S SKID TOWER WITH SHELTER

The S8S is Aluma Tower's cost-effective solution for applications requiring a compact, skid-mounted shelter with an integrated tower system. Built with the same rugged standards as all our shelters, the S8S features a durable, portable enclosure mounted on a skid base, paired with a vertically deployed mobile lattice tower or telescopic mast.

Designed for ease of transport and deployment, the platform includes integrated fork pockets for effortless maneuverability. Its lightweight design allows towing with most vehicles equipped with Class III hitches, making it ideal for rapid response and remote operations. The S8S is highly customizable, with available options including tailored electrical systems, equipment racks, and other mission-specific configurations.

Essential Features

- The mobile shelter measures 8 ft (2.4 m) W x 8 ft (2.4 m) L x 7.8 ft (2.38 m) H
- The S8S has ample room for equipment racks and all the functionality and accessories available as the larger systems, including HVAC systems, and electrical systems
- It is lightweight enough to be trailered by most $\frac{3}{4}$ ton trucks, while still providing a shelter enclosure to house your communications equipment. The S8S makes for a simple, lightweight trailer-mounted mast mobile platform
- A range of towers or telescopic masts are available with this model
- Lift rings can be added as an option to allow maneuvering via crane and helicopter



S510 TRAILER TOWER WITH SHELTER

Aluma Tower's rugged S510 Shelter Scorpion® military mast antenna shelter trailer tower unit, which features a lightweight all-aluminum telecom shelter enclosure, is built for rough environments with off-road LT tires, torsion spring axles, and a fully-welded chassis. Any of our stout portable telescopic masts (portable antenna masts, unguyed self-supporting towers) in a variety of heights can be coupled to complete your needs for a mobile military mast antenna system.

The S510 is designed and manufactured for rapid deployment and decades of low-maintenance service. These military mast towers are currently being used throughout the world for wireless communications missions. The easily transported S510 can be towed by numerous military vehicles and is C-130 certified for air transport. The optional helicopter lift hooks provide additional mobility and transportability when necessary, making it ideal for portable telescopic masts, portable antenna masts, and military mast antenna tower configurations.



Essential Features

- This military mast tower system, with a well-insulated, low RF interference telecom shelter, is ideal for harsh environments requiring a mobile communication or wireless communication platform
- This all-aluminum shelter measures 10 ft [3 m] L x 5 ft [1.52 m] W x 6 ft 4 in [1.93 m] H and is capable of housing large amounts of radio telecom equipment
- The accompanying aluminum, portable telescopic towers are available in ranges from 30 ft [9.14 m] to 106 ft [32.3 m] tall
- The S510 is capable of supporting up to 160 RU's of radio equipment
- Transport options: C-130 certified, can be towed by numerous military vehicles, optional helicopter lift hooks
- Options include custom electrical packages [50Hz or 60Hz], HVAC systems, slide out equipment racks, CARC paint, UID labelling [MIL-STD-130 UID], SMART systems, and more



S812 TRAILER TOWER WITH SHELTER

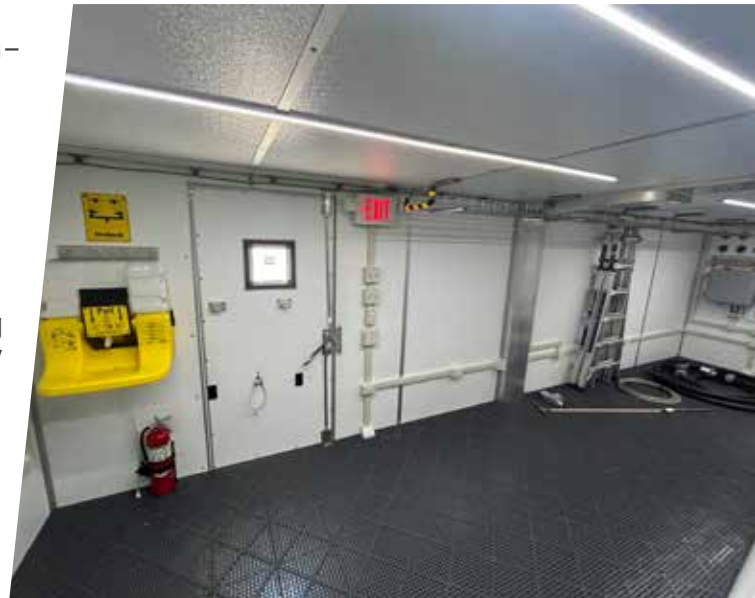
Aluma Tower's S812 Cell on Wheels communication shelter on a very robust trailer chassis, capable of handling unguyed towers up to 106 ft [32 m].

The S812 shelter trailer, combined with one of our T2 towers, is our bestselling shelter trailer tower system.

This top-of-the-line shelter trailer also comes in a military version, the S812MIL, featuring HMWV tires, higher portability and increased interior height. One of our largest shelters, the S812 is available with any of our wide array of options or accessories, including nearly any customization you may need. The telescoping tower mast offerings include any of our unguyed towers, as well as any of our larger, high-payload, extreme-duty towers.

Essential Features

- Overall dimensions of the S812 shelter are 8 ft [2.44 m] W x 12 ft [3.66 m] L x 8 ft [2.44 m] H
- This portable antenna mast shelter system has a very spacious interior and can be configured to house up to nine of our unique slide out, rotating equipment racks, along with other items you may require to support your telescoping tower mast
- The S812 is available with an array of options and accessories
- This trailer chassis has a high payload capacity and good ground clearance
- Trailer chassis is available with a gooseneck tongue & platform for easy install of antennas.
- Capable of handling one of our unguyed telescopic towers to provide a complete self-supporting tower mast system
- This heavyweight mobile shelter trailer tower can be towed with a one-ton capacity vehicle





S816 TRAILER TOWER WITH SHELTER

The largest of Aluma Tower's standard shelter sizes, the S816 is capable of handling large amounts of equipment as a self-supporting tower system.

As the top-of-the line portable antenna mast system, the S816 telescoping tower trailer is our best selling and most capable self-supporting tower system. This unit is also available in a military version as the S816MIL, and any way you look at it, makes for the ideal and efficient telescoping tower trailer or telecom shelter unit. It is extremely roomy and built to be an integral part of your complete system.

The S816 is available with any of our wide array of options or accessories, including nearly any customizations you may require to provide a superior self-supporting tower system. The telescoping tower mast offerings include any of our unguyed towers, either our T2 or TU models, as well as any of our larger, high-payload, extreme-duty towers.

Essential Features

- Overall dimensions of our S816 shelter are 8ft. (2.44m) wide x 16ft. (4.85m) long x 8ft. (2.44m) high
- This portable antenna mast system shelter has a very spacious interior and can be configured to house up to nine of our unique slide out, rotating equipment racks, along with other items you may require to support your telescoping tower mast
- With a vast offering of options and accessories, the sky is truly the limit with our S816 self-supporting tower system
- Providing a very rugged trailer chassis with high payload capacities and good ground clearance, our S816 self-supporting tower systems have quickly become one of our best-sellers
- By merging our unguyed mobile telescopic mast towers with our S816 self-supporting tower base trailer, we offer our top-of-the-line self-supporting tower mast systems
- Other aluminum telescopic antenna towers can also be paired with this unit, along with nearly any needed products you may require or specify
- A larger tow vehicle having a one-ton capacity is our recommendation for this heavyweight mobile antenna system



OPTIONS AND ACCESSORIES

[NOT AVAILABLE ON ALL MODELS]

Power and Environmental

- HVAC – Air conditioner/heater units
- Exterior GFI Receptacle [various voltages, including universal Schuko style]
- Manual & Automatic Transfer Switches
- On-board Battery Systems
- Shore-Power Cord w/ Twist Lock or Amphenol Connectors
- Cummins Onan and Kubota diesel generators
- Custom Gasoline and Diesel Gensets
- Custom Fuel Tanks

Tower Accessories

- Electric Telescoping Tower Winch [AC or DC options available]
- Electric Tongue Jack
- Electric Winch for Tilting Tower [AC or DC options available]
- Guy Wire Anchor Kits

Trailer

- Aluminum Storage Boxes
- Military / CARC Paint
- Spare Tire

Communications

- Equipment racks
- I/O Port Cable Passthroughs
- Isolated Equipment Racks [capacities up to 160 RU]
- Lightning protection Systems
- Motorola R56 complete grounding system
- ECU System
- Coax Cable Reels
- Antenna Stand-offs [single, double, triple, quad, custom, etc.]
- Antenna storage containers

Security and Safety

- LED Work Lights
- Portable / Removable LED Floodlights
- Flashing Emergency Lights
- Telescoping light and camera towers

OPTIONS AND ACCESSORIES [NOT AVAILABLE ON ALL MODELS]



Trailer & Tower Accessories



CONTACT YOUR SALES REPRESENTATIVE TODAY



Contact Us
Complete a Contact Form

WILL-BURT NORTH AMERICA
WORLD HEADQUARTERS

401 Collins Boulevard, Orrville, OH 44667 USA
Telephone: +1 330 682 7015
Mast Customer Service: +1 330 684 4000
Fax: +1 330 684 1190
Email: info@willburt.com

WILL-BURT
UNITED KINGDOM

Unit 5b, Station Approach, Four Marks,
Alton Hampshire, GU34 5HN, United Kingdom
Telephone: +44 (0) 1403 265532
Fax: +44 (0) 1403 259072
Email: info@willburt.com

WILL-BURT INTEGRATION
ALUMA TOWER | ITS

7750 9th Street SW
Vero Beach, FL 32968 USA
Telephone: +1 772 567 3423 | +1 800 850 8535
Fax: +1 772 567 3432
Aluma Tower Email: info@alumatawer.com
ITS Email: programs@itstowers.com

WILL-BURT ASIA
SINGAPORE SALES OFFICE

1 Fullerton Road, #02-01
One Fullerton, Singapore 049213
Telephone: +65 6832 5689
Fax: +65 6722 0664
Email: info@willburt.com

WILL-BURT
GERMANY

Fischerergasse 25
D-91344 Waischenfeld, Germany
Telephone: +49 9202 180
Fax: +49 9202 1811
Email: info@willburt.com

CLARK MASTS
A WILL-BURT COMPANY

18-20 Ringwood Road, Binstead,
Isle of Wight, PO33 3PA, England
Telephone: +44 (0) 1983 563691/567090
Fax: +44 (0) 1983 566643/811157
E-mail: sales@clarkmasts.com

The Will-Burt Company, headquartered in Orrville, Ohio, USA, is the world's premier manufacturer of mobile telescoping masts, towers and pan and tilt positioners. We offer virtually every mobile payload elevation and integration solution for defense, government, first responders, cellular and mobile, broadcast, energy production and other markets. Will-Burt also offers contract manufacturing, metal fabrication, powder-coating, and rapid prototyping services. Will-Burt is an international company with offices and manufacturing in the USA, England, and Germany along with offices in Singapore. All Will-Burt Company manufacturing locations are backed by a certified ISO 9001:2015 Quality Management System. Incorporated in 1918, Will-Burt is 100% employee-owned and is classified as a small business.

*Disclaimer: Dimensions and weights are for reference only and are subject to change.
Please contact Will-Burt for current engineering specifications.*



Will-Burt Terms and Conditions of Sale:
<https://www.willburt.com/support/service/will-burt-terms-conditions-of-sale/>

January, 2026
The Will-Burt Company
ISO 9001:2015
INNOVATION ELEVATED®