



TELECOMMUNICATIONS ELEVATION SOLUTIONS



AMERICAS

INNOVATION ELEVATED®



The Will-Burt Company offers a broad selection of mobile telescopic masts, lattice towers, pan and tilt positioners and accessories to elevate a variety of mission critical payloads. Each family of elevation solutions is designed and manufactured with a unique set of characteristics tuned to optimize payload performance and meet the most stringent performance criteria. High performance tactical trailers round out the military offerings of The Will-Burt Company.

The ability of Will-Burt to deliver superior elevation solutions is attributed to its worldwide leadership in the industry for over 70 years. Teams of experienced research and development engineers, design engineers and ISO 9001:2015 quality systems certified manufacturing experts are backed by a sales and marketing support structure focused on delivering the correct customer solution on time, every time.

Whether your program requires a commercial off-the-shelf solution or a highly engineered customized product, The Will-Burt Company has the experience, design know-how and manufacturing capabilities to meet your unique requirements.

The Advantages of The Will-Burt Company

- Worldwide elevation leader since 1946
- Wide array of elevation products designed for specific missions
- MIL-STD 810 Certified Products
- ISO 9001:2015 quality certified manufacturing
- Innovative custom solutions designed by experienced engineers
- Superior customer support

Portable Telescopic Masts and Towers Height and Payload Capabilities

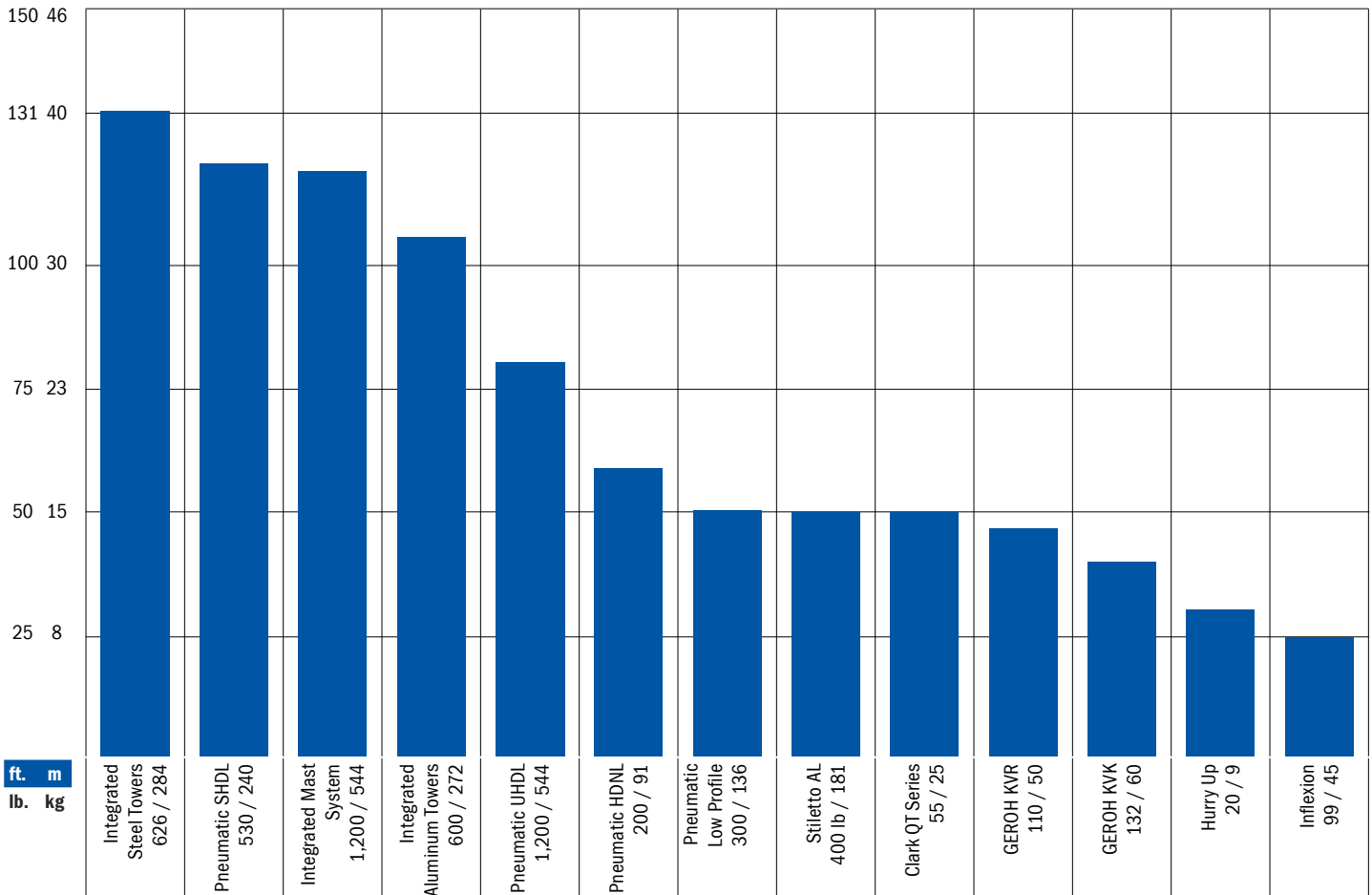


TABLE OF CONTENTS



4-5

**INFLEXION®
ROOF-MOUNTED
PNEUMATIC MASTS**

COMMUNICATIONS
LIGHTING



6-7

**LOW PROFILE
PNEUMATIC MASTS**

COMMUNICATIONS
LIGHTING



8-9

**SD, HD & SHD
NON-LOCKING
PNEUMATIC MASTS**

COMMUNICATIONS



10-11

**HD & SHD LOCKING
PNEUMATIC MASTS**

COMMUNICATIONS



12-13

**UHD LOCKING
PNEUMATIC MASTS**

COMMUNICATIONS



14-19

**PNEUMATIC MAST
ACCESSORIES**



20-21

**HURRY-UP PORTABLE
FIELD MASTS**

COMMUNICATIONS



22-23

**QT SERIES PORTABLE
FIELD MASTS**

COMMUNICATIONS



24-25

**STILETTO AL
MECHANICAL MASTS**

SURVEILLANCE
SECURITY
COMMUNICATIONS



26-27

**GEROH KV SERIES
CABLE-DRIVE MASTS**

SURVEILLANCE
COMMUNICATIONS
LIGHTING



28-31

**POSITIONERS AND
CONTROLLERS**

COMMUNICATIONS



32-39

**INTEGRATED MOBILE
LATTICE TOWERS AND
MAST SYSTEMS**

SURVEILLANCE
COMMUNICATIONS
COUNTER UAS



INFLEXION™ ROOF-MOUNTED TELESCOPING MAST

Extended Heights up to 24 ft. | Payload Capacity up to 100 lb

The Will-Burt Company has partnered with the industry leaders in broadcast vehicle integration for over 30 years. This has allowed Will-Burt to identify advances and changes in broadcast technology early and design elevation solutions to optimize that technology.

Inflexion™ was designed to meet the elevation requirements of smaller, advanced broadcast devices. The roof-mounted, self-contained Inflexion™ can easily be integrated onto nearly any vehicle, from traditional broadcast vans to small, front-wheel drive vehicles. This allows you to take full advantage of fuel and vehicle cost savings.

STANDARD FEATURES

- Compact, roof-mount design
 - No interior space needed
- Self-contained elevation system
 - No compressor or generator required
- Years of reliable service
 - Field proven design with over 25 years of service - 2 year manufacturer warranty
- High payload capacity and height options
 - From 5 ft. / 1.0m to 24 ft. / 7.3m
- Accommodates a variety of payloads
 - Antennas, satellite dish, radar, lighting and cameras
- 12 VDC operation
- Color
 - White
- Analog Handheld controller
 - Includes mast up/down function

OPTIONAL FEATURES

- PositionIt
 - Integrated pan and tilt positioner
- InflexionPlus
 - Accommodates full function handheld controller (sold separately)
- Color
 - Black
- Internal wiring or Nycoil
 - Consult factory for specific application
- 24 VDC operation



Inflexion Models	1.0	1.8	2.3	3.0	4.5	6.0	7.5
Extended Height [ft. / m]	3.16 / 0.96	5.3 / 1.62	6.6 / 2.0	9.0 / 2.7	14.0 / 4.2	19.0 / 5.8	24.0 / 7.3
Stowed Dimensions [Approximate] [L x W x H (ft. / m)]	3.45 x 1.27 x 0.81 / 1.05 x 0.38 x 0.26	3.08 x 1.27 x 0.8 / 0.94 x 0.39 x 0.24	3.6 x 1.3 x 0.92 / 1.1 x 0.4 x 0.28	4.8 x 1.3 x 1.0 / 1.5 x 0.4 x 0.3	5.8 x 1.3 x 1.0 / 1.8 x 0.4 x 0.3	6.8 x 1.3 x 1.0 / 2.07 x 0.4 x 0.3	8.0 x 1.3 x 1.0 / 2.44 x 0.4 x 0.3
Maximum Payload Capacity* [lb / kg]	50 / 23	53 / 24	46 / 21	100 / 45	84 / 38	60 / 27	50 / 23
System Weight Range [lb / kg]	60 / 27	63 / 29	66 / 30	105 / 47	113 / 51	124 / 56	142 / 65
Operating Temperature Range [°F / °C]	-22 to 149 / -30 to 65	-22 to 149 / -30 to 65	-22 to 149 / -30 to 65	-22 to 149 / -30 to 65	-22 to 149 / -30 to 65	-22 to 149 / -30 to 65	-22 to 149 / -30 to 65

*The added weight of a positioner or D-TEC II will reduce maximum payload capacity. Capacity will be affected by wind sail area. Consult factory.



LOW-PROFILE NON-LOCKING PNEUMATIC TELESCOPING MASTS

Extended Heights up to 50 ft. | Payload Capacity up to 300 lb

Internal collars deliver lower nested height.

Today's ENG vehicles such as the Ford Transit and Nissan NV, require a high performance telescopic mast with a lower nested height in order to meet highway height restrictions.

Will-Burt's Low-Profile mast with innovative internal collar design optimizes the nested to extended height ratio for a shorter retracted mast. Each collar is stored inside the next rather than stacking the collars one on top of the other - minimizing the stowed mast height.

An integrated locking payload top plate stabilizes the payload when stowed and in transit. Lastly, Will-Burt's mast design reduces extended mast twist for the best possible video feed.

- Low-Nested Height
 - Internal collar design minimizes height of stowed mast
 - Design optimized for new, smaller ENG vehicles
- Precise and Stable
 - Design minimizes mast twist when extended
 - Integrated locking payload top plate stabilizes payload when in transit
- No Maintenance Required
 - No routine maintenance required under normal operating conditions
 - 5 year manufacturer warranty





Low Profile	7-27	6-29	5.3-32	7-42	6-42	7.3-50
Extended Height [ft. / m]	26.7 / 8.2	28.4 / 8.7	32 / 9.75	41.2 / 12.5	41.2 / 12.5	50 / 15.3
Nested Height [ft. / m]	6.5 / 2.0	6.0 / 1.8	5.3 / 1.7	6.8 / 2.1	6.3 / 1.9	7.3 / 2.3
Payload Capacity [lb / kg]*	300 / 136	200 / 91	200 / 91	300 / 136	200 / 91	200 / 91
Approx. Mast Weight [lb / kg]	118 / 53	119 / 54	197 / 90	230 / 104	223 / 101	257 / 117
Number of Sections	5	6	8	8	9	9
Tube Diameter [in. / cm]	6.75-3.75 / 17.15-9.53	6.75-3.00 / 7.15-7.62	9.00-3.00 / 22.86-7.62	9.00-3.75 / 22.86-9.53	9.00-3.00 / 22.86-7.62	9.00-3.00 / 22.86-7.62
Collar Type	Internal, Non-Locking	Internal, Non-Locking	Internal, Non-Locking	Internal, Non-Locking	Internal, Non-Locking	Internal, Non-Locking
Max. Operating Pressure	35 PSIG [2.4 bar]	35 PSIG [2.4 bar]	35 PSIG [2.4 bar]	35 PSIG [2.4 bar]	35 PSIG [2.4 bar]	35 PSIG [2.4 bar]

*Capacity will be affected by wind sail area. Consult factory. | **Internally wired versions available



SD, HD & SHD NON-LOCKING PNEUMATIC TELESCOPING MASTS

Extended Heights up to 58 ft. | Payload Capacity up to 1,200 lb

The Will-Burt Pneumatic Heavy-Duty Non-Locking (HDNL) and Super Heavy-Duty Non-Locking (SHDNL) Masts offer a light-weight solution with a high payload lifting capacity. Our Pneumatic Non-Locking Masts also feature high pointing accuracy and long mast life for high performance and dependability. The pneumatic heavy-duty design makes it inherently safe. What's more, the Pneumatic Non-Locking Masts have controlled exhausting of air for smooth and safe retraction. Locking models are available for extended deployments.

- Maintains Azimuth - minimal twist deflection
 - Reliable full-length external keyways
- Reliable Operation
 - Anodized aluminum with synthetic bearings
- No Maintenance Required
 - Under normal operating conditions
 - 5 year manufacturer warranty





Super Heavy-Duty	10-38	12-48
Extended Height [ft. / m]	38.0 / 11.58	48.0 / 14.6
Nested Height [ft. / m]	10.0 / 3.05	12.0 / 3.66
Payload Capacity [lb / kg]*	1,200 / 544	1,200 / 544
Approx. Mast Weight [lb / kg]	400 / 181	475 / 215
Number of Sections	5	5
Tube Diameter [in. / cm]	11.25-7.5 / 286-191	11.25-7.5 / 286-191
Collars	Non-Locking	Non-Locking
Max. Operating Pressure	35 PSIG [2.4 bar]	35 PSIG [2.4 bar]

Heavy-Duty	6-25	7-30	7-42	8.5-48	8.5-52	9.5-56	9-58
Extended Height [ft. / m]	25.0 / 7.6	29.2 / 8.9	41.0 / 12.5	48.0 / 14.6	52.0 / 15.8	56.0 / 17.0	58 / 17.7
Nested Height [ft. / m]	5.8 / 1.8	6.7 / 2.0	6.8 / 2.1	8.5 / 2.6	8.3 / 2.5	9.5 / 2.9	8.8 / 2.7
Payload Capacity [lb / kg]*	200 / 91	200 / 91	200 / 91	300 / 136	200 / 91	300 / 136	200 / 91
Approx. Mast Weight [lb / kg]	110 / 50	125 / 57	235 / 107	275 / 125	266 / 121	296 / 135	290 / 132
Number Sections	6	6	9	8	9	8	9
Tube Diameter [in. / cm]	6.75-3.00 / 171-76	6.75-3.00 / 171-76	9.00-3.00 / 229-76	9.00-3.75 / 229-95	9.00-3.00 / 229-76	9.00-3.00 / 229-76	9.00-3.00 / 229-76
Collar Type	Non-Locking	Non-Locking	Non-Locking	Non-Locking	Non-Locking	Non-Locking	Non-Locking
Max. Operating Pressure	35 PSIG [2.4 bar]	35 PSIG [2.4 bar]	35 PSIG [2.4 bar]	35 PSIG [2.4 bar]	35 PSIG [2.4 bar]	35 PSIG [2.4 bar]	35 PSIG [2.4 bar]

Standard-Duty**	5-20	6-27	7-34	8-30
Extended Height [ft. / m]	20.0 / 6.1	27.0 / 8.2	33.8 / 10.3	29.8 / 9.1
Nested Height [ft. / m]	5.3 / 1.6	5.9 / 1.8	6.8 / 2.1	7.8 / 2.4
Payload Capacity [lb / kg]*	70 / 32	40 / 18	40 / 18	100 / 45
Approx. Mast Weight [lb / kg]	45 / 21	54 / 25	67 / 31	64 / 29
Number of Sections	6	7	7	5
Tube Diameter [in. / cm]	5.00-2.50 / 127-64	5.00-2.00 / 127-51	5.00-2.00 / 127-51	5.00-3.00 / 127-76
Collar Type	Non-Locking	Non-Locking	Non-Locking	Non-Locking
Max. Operating Pressure	20 PSIG [1.4 bar]	20 PSIG [1.4 bar]	20 PSIG [1.4 bar]	20 PSIG [1.4 bar]

*Capacity will be affected by wind sail area. Consult factory. | **Internally wired versions available



HEAVY-DUTY & SUPER HEAVY-DUTY LOCKING PNEUMATIC TELESCOPING MASTS

Extended Heights up to 120 ft. | Payload Capacity up to 980 lb

Designed for extended deployment periods.

Available in both Heavy Duty and Super Heavy Duty models, these masts offer a light weight elevation solution with a high payload capacity. These vehicle or trailer mounted telescoping masts feature locking collars that allow the mast to remain extended indefinitely without air pressure. Full-length keyways maintain directional azimuth and provide precise pointing accuracy.

- Maintains Height Indefinitely
 - Locking collars are easy to operate
- Maintains Azimuth - minimal twist deflection
 - Full-length external keyways
- No Maintenance Required
 - Under normal operating conditions
 - 5 year manufacturer warranty

Available with Remote Locking Collars – Improve safety for higher mast heights





Heavy-Duty	6-25	7-30	7-32	7-42	10-60	14.5-80
Extended Height [ft. / m]	25.0 / 7.62	29.2 / 8.9	31.0 / 9.45	41.3 / 12.6	60.0 / 18.3	80.0 / 24.3
Nested Height [ft. / m]	6.2 / 1.9	6.8 / 2.1	7.1 / 2.18	7.5 / 2.3	9.8 / 3.0	14.1 / 4.3
Payload Capacity [lb / kg]*	200 / 91	200 / 91	400 / 181	200 / 91	300 / 136	400 / 181
Approx. Mast Weight [lb / kg]	119 / 54	125 / 57	235 / 107	235 / 107	330 / 150	416 / 189
Number of Sections	5	6	7	9	8	7
Tube Diameter [in. / cm]	3.00-6.75 / 76-171	3.00-6.75 / 76-171	4.50-9.00 / 114-229	9.00-3.00 / 229-76	9.00-3.75 / 229-95	9.00-4.50 / 229-114
Collar Type	Locking with T-Handles	Locking with T-Handles	Locking with T-Handles	Locking with T-Handles	Locking with T-Handles	Locking and Trip Lines
Guying Required	Optional	Optional	Optional	Optional	Optional	4 way / 4 level
Max. Operating Pressure	35 PSIG [2.4 bar]	35 PSIG [2.4 bar]	35 PSIG [2.4 bar]	35 PSIG [2.4 bar]	35 PSIG [2.4 bar]	35 PSIG [2.4 bar]

Super Heavy-Duty	10-44.5	9-50	10.3-60	10.8-76	11.5-76	15.7-100	18-120
Extended Height [ft. / m]	44.6 / 13.6	50.2 / 15.3	60.4 / 18.4	75.5 / 23.0	76.0 / 23.17	99.4 / 30.3	120 / 36.5
Nested Height [ft. / m]	10.0 / 3.05	9.1 / 2.8	10.4 / 3.18	10.8 / 3.3	11.4 / 3.5	15.7 / 4.8	18.3 / 5.6
Payload Capacity [lb / kg]*	980 / 444	530 / 240	530 / 240	300 / 136	400 / 181	530 / 240	530 / 240
Approx. Mast Weight [lb / kg]	313 / 142	500 / 227	500 / 227	536 / 245	613 / 278	790 / 361	920 / 417
Number of Sections	6	8	8	10	9	8	8
Tube Diameter [in. / cm]	11.25-6.75 / 286-172	11.25-5.25 / 288-135	11.25-5.25 / 288-135	11.25-3.75 / 288-96	11.25-4.50 / 286-108	11.25-5.25 / 288-135	11.25-5.25 / 288-135
Collar Type	Locking with T-Handles	Locking with T-Handles	Locking with T-Handles	Locking with T-Handles & Trip Lines	Locking with Trip Lines	Locking with Trip Lines	Locking with Trip Lines
Guying Required	Optional	Optional	Optional	Yes - 4 Way / 4 Level	Yes	Yes - 4 Way / 4 Level	Yes
Max. Operating Pressure	35 PSIG [2.4 bar]	35 PSIG [2.4 bar]	35 PSIG [2.4 bar]	35 PSIG [2.4 bar]	35 PSIG [2.4 bar]	35 PSIG [2.4 bar]	35 PSIG [2.4 bar]

*Capacity will be affected by wind sail area. Consult factory.



ULTRA HEAVY-DUTY LOCKING PNEUMATIC TELESCOPING MASTS

Extended Heights up to 80 ft. | Payload Capacity up to 1,200 lb

Higher payload capacity with shorter nested height.

The Ultra Heavy-Duty Pneumatic Mast with Locking Collars delivers an unparalleled combination of strength and rigidity in a design that delivers the performance of a hydraulic mast at less weight and without the need for environmentally dangerous fluids.

The Ultra Heavy-Duty mast was specifically designed for mobile communications providing better unguyed performance at lower nested heights - eliminating the need for an expensive tilt system.

- Strong
 - Elevates heavier loads with greater wind sail area
 - Greater unguyed performance
- Fast & Efficient
 - Lower nested height eliminates the need for costly and complicated tilt systems
 - Easier to deploy in urban areas
 - Safe long-term deployment with easy to operate positive locking pins
- Reliable
 - 5 year manufacturer warranty
 - No maintenance required
 - No hydraulic fluid concerns

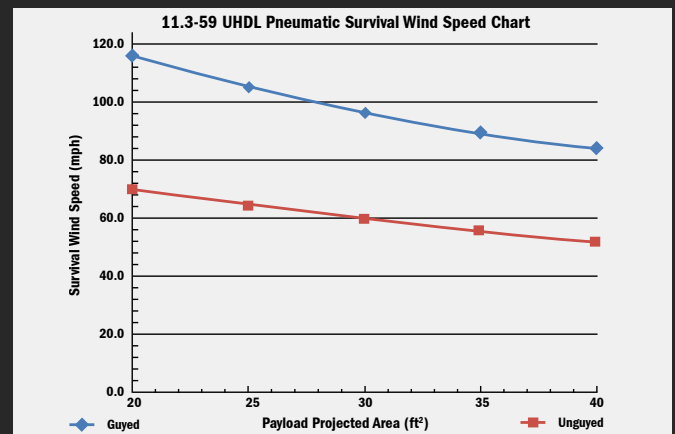




Ultra Heavy-Duty	8-39	11.3-59	9.8-65.6	13-70	14.4-80
Extended Height [ft. / m]	39.3 / 12.0	59.1 / 18.0	65.6 / 20.0	69.9 / 21.3	79.7 / 24.3
Nested Height [ft. / m]	7.8 / 2.4	11.3 / 3.4	9.8 / 3.0	13.1 / 4.0	14.4 / 4.4
Payload Capacity [lb / kg]*	980 / 444	1,200 / 544	530 / 240	1,200 / 544	1,200 / 544
Approx. Mast Weight [lb / kg]	607 / 275	814 / 369	852 / 387	920 / 417	1,078 / 489
Number of Sections	8	7	10	7	7
Tube Diameter [in. / cm]	13.50-6.75 / 34.29-17.15	13.50-7.50 / 34.29-19.05	13.50-5.25 / 34.29-13.34	13.50-7.50 / 34.29-19.05	13.50-7.50 / 34.29-19.05
Collar Type	Locking with Super Pins				
Max. Operating Pressure	35 PSIG [2.4 bar]	35 PSIG [2.4 bar]	35 PSIG [2.4 bar]	35 PSIG [2.4 bar]	35 PSIG [2.4 bar]

*Capacity will be affected by wind sail area. Consult factory.

Available with Remote Locking Collars – Improve safety for higher mast heights





Locks and Controls Included



Unlocked Pneumatic Actuator



Optional Handheld Controller



Locked Pneumatic Actuator



Control Box Included

REMOTE LOCKING SYSTEM

Available for Locking Pneumatic Mast Systems up to 80 ft. / 24m

Will-Burt's Remote Locking System for locking pneumatic masts allows an operator to lock and unlock the mast from an assured distance. No manual interaction is required to raise or lower the mast. Operation of the system is intuitive, requiring less training and reducing the risk of operator error. The Remote Locking System is available on any Heavy-Duty locking mast system or larger up to 24m / 80 ft.

- Ability to stand clear from payload during deployment and retraction
- Easy to understand and operate control
- Super pins for longer lock life and increased wind survival speed in guyed applications
- Close azimuth design and two full-length keys on every mast section reduces mast movement and twist
- No routine maintenance required
- Pneumatic operation requires no fluids
- Control Box included
- Optional Handheld Controller





D-TEC® LIVE POWER LINE DETECTION SYSTEM

Provides overhead power line detection

The D-TEC® safety system provides overhead power line detection and above-the-mast illumination. The built-in high voltage, electromagnetic and electrostatic field detection system automatically stops mast extension, providing added protection for the operator and equipment. The D-TEC® safety system is available on powerlite and vertical telescoping masts.

- LED Look-Up Light
- Audible alerts
- Alphanumeric LED display
- Built-in Emergency Bypass
- Expanded self-testing features
- Factory pre-set siren and verbal warning in English and Spanish



Detection Frequency Range	47Hz - 70 Hz
Detection	Electromagnetic & electrostatic field detection
Look-up Light	LED Look-up Light
Power Requirements	12 VDC 10 Amps / 24 VDC 5 Amps
Interconnecting Cable	2 twisted pair shielded (sensor to control unit)
Environmental Conditions	Sensor IP67, Control IP65
Operating Temperature [°F / °C]	-40 to 160 / -40 to +71
Display Options [L x W x H] [in. / mm]	8.661 x 4.784 x 4.173 / 220 x 121.5 x 106
Sensor Housing [L x W x H] [in. / mm]	5 x 3.6 x 5.6 / 127 x 92 x 141
Rack Mount [L x W x H] [in. / mm]	19 x 6.089 x 1.75 / 483 x 154.7 x 44.5

PNEUMATIC SYSTEMS

Will-Burt offers a variety of low-maintenance pneumatic systems and hand pumps, all specifically designed for optimal performance for use with Will-Burt Telescoping Masts.

Each system is shipped completely assembled, tested and factory preset.



AC Models



AC Models



Optional HandHeld Remote



WB 135 AC/DC Models



WB 280 AC/DC Models

AC Models	WB135	WB135	WB280	WB280			
Part Number	5766701	5857701	5802201 / 5766301	5802301	902404	903193	912361
Mast Application	Standard Duty		Heavy / Super / Ultra Duty				
Voltage	110VAC 60Hz	220VAC 50Hz	110VAC 60Hz	220VAC 50Hz	110VAC / 60Hz	220VAC 50Hz	220VAC 60Hz
CFM	4.7	4.7	9.8	9.8	4.4	2.01	4.4
Ltr / Min	135	135	280	280	125	57	101
Operating Temperature [°F / °C]	14 to 131 / -10 to 55	14 to 131 / -10 to 55	14 to 131 / -10 to 55	14 to 131 / -10 to 55	50 to 104 / 10 to 40	-4 to 131 / -20 to 55	50 to 104 / 10 to 40
Protective Enclosure	x	x	x	x			
Cooling Fan					x	x	x
Air Hose with Fittings	x	x	x	x	x	x	x
Pressure Gauge	x	x	x	x	x	x	x
Pressure Switch	20 ±2 psi	20 ±2 psi	35 ±2 psi	35 ±2 psi	32 ±2 psi	32 ±2 psi	32 ±2 psi
Current Draw	7 amps	3.5 amps	14 amps	7 amps	10.6 amps	4.1 amps	5.3 amps
Weight [lb / kg]	55 / 25	55 / 25	62 / 28	62 / 28	45 / 20	55 / 25	45 / 20
Dimensions [L x W x H] [in. / mm]	15.2 x 10.1 x 15 / 385 x 255 x 380		16.6 x 11.7 x 15.1 / 420 x 295 x 380		18.33 x 11.61 x 8.91 / 466 x 295 x 227	16.4 x 12.6 x 9.0 / 417 x 320 x 229	18.33 x 11.61 x 8.91 / 466 x 295 x 227

DC Models	WB135	WB135	WB135	WB135
Part Number	5857801	5857901	5766801	5766901
Mast Application	Standard Duty		Heavy / Super / Ultra Duty	
Voltage	12	24	12	24
CFM	4.7	4.7	4.7	4.7
Ltr / Min	135	135	135	135
Operating Temperature [°F / °C]	14 to 131 / -10 to 55		14 to 131 / -10 to 55	
Protective Enclosure	x	x	x	x
Cooling Fan				
Air Hose with Fittings	x	x	x	x
Pressure Gauge	x	x	x	x
Pressure Switch	20 ±2 psi	20 ±2 psi	35 ±2 psi	35 ±2 psi
Current Draw	65 amps	32 amps	65 amps	32 amps
Weight [lb / kg]	55 / 25	55 / 25	55 / 25	55 / 25
Dimensions [L x W x H] [in. / mm]	15.2 x 10.1 x 15.2 / 385 x 255 x 385		15.2 x 10.1 x 15.2 / 385 x 255 x 385	

NYCOIL® COILED CONDUIT

Will-Burt Cable Management accessories keep cables in place to protect data and power cables.

NYCOIL® is a coiled conduit used to house wiring, antenna coax and positioner cable that is too large to fit inside a non-locking mast. NYCOIL® easily fits around the mast and extends neatly and compactly retracts when the mast is nested.

A variety of sizes is available from 0.5 in. / 1.27 cm to 1.25 in. / 3.2 cm in diameter with lengths available up to 100 ft. / 30m.

- Compactly retracts when mast is stowed
- Easily fits around non-locking collar telescoping mast
- Extends neatly with mast



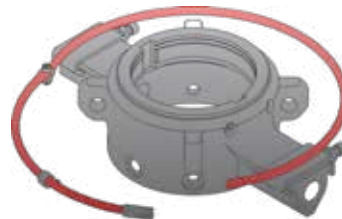
CABLE MANAGEMENT

Nycoil Coiled Conduit | Cable Guide Rings

CABLE GUIDE RINGS

Will-Burt offers Cable Guide Ring Kits for locking pneumatic masts to keep power and data cables in place. Full Circle Kits are recommended for masts with trip lines and Half Circle kits are recommended for masts with yokes & t-handles.

Will-Burt also offers design solutions for standard off the shelf, custom mounting, and integration hardware.



UnHINGED Full Circle Cable Ring



Half Circle Cable Ring



Full Circle Cable Ring



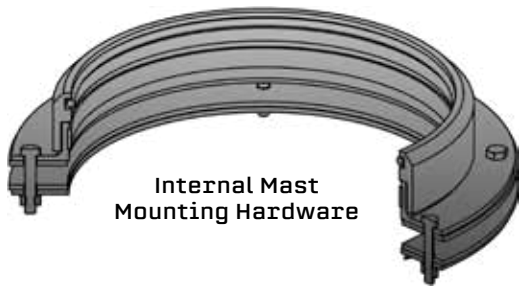
SUPPORT BRACKETS

Will-Burt provides standard internal mounting and optional external mounting for pneumatic telescoping masts.

Internal Mounting Hardware: Mounting through the vehicle's roof.

External Mounting Hardware: Mounting to the outside of a vehicle.

Will-burt also offers standard off the shelf and custom mounting and integration hardware and design solutions.



Internal Mast Mounting Hardware



External Mast Mounting Hardware

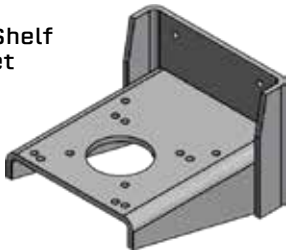


MOUNTING HARDWARE

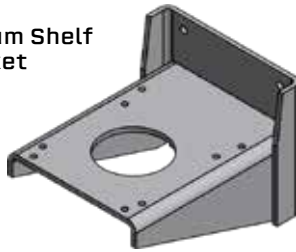
Support Brackets | Shelf Brackets | Base Plates

SHELF BRACKETS

Small Shelf Bracket



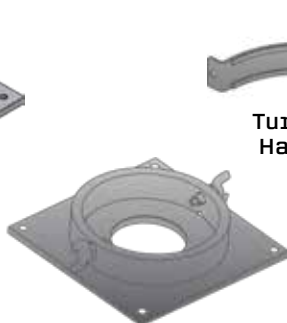
Medium Shelf Bracket



BASE PLATES (Required for all pneumatic masts)



11.25" Rotatable Base Plate



Rotatable Base Plate



Turning Handle



Non-Rotatable Base Plate



PAYLOAD ADAPTERS



6" Square - 4 Hole Platform for 3" Tube



8" x 4 1/2" Square Platform



13" x 4 1/2" Round Platform



Payload Adapter on RLS Mast



Guying Platform for Remote Locking System



6" Square Platform for 3" Tube



3" Antenna Stub for Heavy Duty Mast

MOUNTING HARDWARE

Payload Adapters | Guy Kits

GUY KITS (for locking masts only)



Kevlar Guy Kit



Stainless Steel Guy Kit



Screw Anchor





HURRY-UP PORTABLE PUSH UP TELESCOPING MAST

Extended Heights up to 30 ft. | Payload Capacity up to 20 lb

The Hurry-Up manual push-up mast, can be extended to a full height of 30 feet (9 m) in one minute or less. The Hurry-Up mast features quick lock/release collars. Extend the mast manually by pushing up the sections and fixing them in position. This mast is ideal for fast deployment of light-weight antennas and instruments.

- Rigid azimuth locking collars
 - Quick direction adjustments
- Black anodized finish
 - Corrosion resistant
- Simple design and operation
 - Manual push-up deployment, retraction, and locking of mast
 - Positional feedback

ACCESSORIES

[Mounting option required]:

- Drive-on plate mounting
 - No guylines required
- Removable payload extension stub
 - Easy payload mounting
- External support brackets
 - Permanent vehicle mounting
- Hitch Mount
 - 2" Hitch - Removable



Hurry-Up Models	3-7	5-17	6-25	6.6-30
Extended Height [ft. / m]	7.0 / 2.1	17.3 / 5.3	24.3 / 7.6	30.0
Nested Height [ft. / m]	3.0 / 1.0	5.3 / 1.6	5.9 / 1.8	6.6 / 2.0
Payload Capacity [lb / kg]	20 / 9	20 / 9	20 / 9	20 / 9
Approximate Weight [lb / kg]	15 / 7	19 / 9	29 / 13	36 / 16
Number of Sections	3	4	6	6
Tube Diameter [in. / mm]	3.50-2.625 / 89-67	3.50-2.25 / 89-57	3.50-1.50 / 89-38	3.50-1.50 / 89-38
Collar Type	Friction Locking	Friction Locking	Friction Locking	Friction Locking
Finish	Black Anodize, MIL-A-8625, Type II, Class 2	Black Anodize, MIL-A-8625, Type II, Class 2	Black Anodize, MIL-A-8625, Type II, Class 2	Black Anodize, MIL-A-8625, Type II, Class 2

DEPLOYMENT OPTIONS



Hitch Mount
2" Removable Hitch



Drive-On Plate
No Guylines Required



External Mount
Shelf and Support Brackets



CLARK QT SERIES PNEUMATIC MASTS

Extended Heights up to 49.2 ft. | Payload Capacity up to 44 lb

The QT Range of lightweight telescopic pneumatic masts are designed to be portable and erected quickly where they are required. Available in a wide range of heights from 3m to 15m and in a range of sizes to suit varying headloads. It is a highly versatile system capable of being field mounted using a folding tripod stand or field guy set. Equally at home when mounted to a vehicle or shelter, the QT Range is designed to be versatile. Made from high strength 16 swg aluminium tube to save weight, the QT Range is non keyed and each section is fitted with a locking collar. Payloads are quickly attached using the quick clamp 24mm socket.

- Lightweight and portable
- Field, vehicle or shelter mounted
- Integral handpump
- Locking collars
- 5/8 in. / 24mm quick clamp top socket

QT SERIES MK VI TRIPOD

All MK VI tripods can either be stored vertically or horizontally and suitable for non-rotatable masts up to 15 meters. Additionally, a tripod mounting bracket is available for all QT models, allowing the mast to be fixed onto a wall, vehicle, or shelter. A ground, vehicle, or shelter tripod is equipped with a locking block which enables the user to attach this tripod to the tripod mounting bracket for compact vertical storage, with or without the mast.





Clark QT Series	3.5-13	5-20	6-26	7-33	9-40	9-49
Extended Height [ft. / m]	13.1 / 4.0	20.0 / 6.10	26.1 / 7.95	33.3 / 10.15	40.0 / 12.20	49.2 / 15.0
Nested Height [ft. / m]	3.5 / 1.05	4.9 / 1.50	5.9 / 1.80	7.2 / 2.20	8.7 / 2.65	9.2 / 2.80
Payload Capacity [lb. / kg]	44 / 20	44 / 20	44 / 20	40 / 18	33 / 15	22 / 10
Approximate Mast Weight [lb. / kg]	18.8 / 8.5	23.9 / 10.8	29.2 / 13.2	33.1 / 15.0	39.7 / 18.0	46.3 / 21.0
Number of Sections	6	6	6	6	6	6
Tube Diameter [in. / mm]	3.5 / 88.9	3.5 / 88.9	3.5 / 88.9	3.5 / 88.9	3.5 / 88.9	3.5 / 88.9
Collar Type	Non-Rotatable	Non-Rotatable	Non-Rotatable	Non-Rotatable	Non-Rotatable	Non-Rotatable
Time to Extend [seconds]	15	30	40	50	60	70
Time to Retract [seconds]	10	20	30	40	45	60
Finish	Natural Anodized	Natural Anodized	Natural Anodized	Natural Anodized	Natural Anodized	Natural Anodized

Clark MK VI Tripod	CM-36585	CM-36586	CM-36587	CM-36588	CM-36589	CM-36590
Extended Height [ft. / m]	13.1 / 4.0	20.0 / 6.1	26.0 / 7.9	33.3 / 10.1	40.0 / 12.2	49.2 / 15.0
Weight [lb / kg]	25.2 / 11.4	28.0 / 12.7	30.9 / 14.0	34.0 / 15.4	36.9 / 16.7	40.0 / 18.0



Mast Wall Mounting Bracket



Top Adaptor



Large Universal Antenna Adaptor



Small Universal Antenna Adapter



2" Hitch Mount Assembly



QT Series Mounting Post



Camera Adaptor

A full range of accessories and payload adaptors are available for the Clark QT Series



STILETTO AL ELECTRO-MECHANICAL MAST

Extended Heights up to 49.2 ft. | Payload Capacity up to 400 lb

High accuracy electro-mechanical telescoping mast

The Stiletto® AL delivers an extremely stable and compact elevation platform for sensors and antennas that require a high degree of pointing accuracy. This high strength aluminum alloy electro-mechanical telescoping mast with patented automatic locks does not require guying and safely deploys payloads at any height. The Stiletto AL is a cost-effective elevation platform designed to meet today's stringent program requirements.

- No guying required, self-supporting mast
- Minimal mast twist
 - Energized keyway guides in accessory-ready collars
- Low wind deflection
 - Mast sections are held tight by constricting wear bands
- Quiet Operation
 - Direct-drive system powered by environmentally sealed 600 watt DC motor with manual over ride
 - Patented Quiet Locks designed for heavy payloads
- Reduced maintenance
 - Clean air filter system prevents dirt from entering the mast
 - Integrated dirt / dust wipers and ice-breakers built into collars
- Four accessory contact points on each collar
- High strength alloy construction
- Integrated PC control
- Support bracket included
- Universal control box included
- MIL-STD 810G certified



High Strength Alloy Construction



Quiet Locks Designed for Heavy Payloads



Digital Control with LED Display



Integrated Dust Wipers and Ice-Breakers



Quiet Sealed Direct-Drive System

Stiletto AL	4.2-13	5.5-20	6.2-28	7-32	9-50
Extended Height [+4 in. / -0 in.] [ft. / m]	13.1 / 4.0	19.6 / 6.0	28.0 / 8.54	32.8 / 10.0	49.2 / 15.0
Nested Height [+1 in. / -0 in.] [ft. / m]	4.2 / 1.28	5.2 / 1.58	6.2 / 1.88	6.9 / 2.10	8.7 / 2.65
Payload Capacity [lb / kg]	400 / 181	400 / 181	400 / 181	400 / 181	350 / 158
Weight [Including Control Box and Cables] [lb / kg]	265 / 120	314 / 143	364 / 165	395 / 179	350 / 158
Number of Sections	5	6	7	7	8
Tube Diameter [in. / cm]	9.85 to 6.7 / 25 to 17	9.85 to 5.91 / 25 to 15	9.85 to 5.12 / 25 to 13	9.85 to 5.12 / 25 to 13	9.85 to 4.33 / 25 to 11
Survival Wind Speed [mph / km/h]	130 / 209	115 / 185	80 / 129	80 / 129	62 / 100
Deployment Wind Speed [mph / km/h]	40 / 64	40 / 64	35 / 56	35 / 56	30 / 48
Erection Time with Power [seconds]	Less than 35	Less than 60	Less than 100	Less than 100	Less than 150
Rotation Accuracy [Twist]	+/-1°	+/-1°	+/-1°	+/-1°	+/-1°
Voltage [MIL-STD 1275] [VDC]	28	28	28	28	28
Footprint [in. / cm]	17.56 x 11.19 / 44.6 x 28.5	17.56 x 11.19 / 44.6 x 28.5	17.56 x 11.19 / 44.6 x 28.5	17.56 x 11.19 / 44.6 x 28.5	17.56 x 11.19 / 44.6 x 28.5
**Typical Payload Sail Area [ft. ² / m ²]	17 / 1.58 CD=1.5	12 / 1.11 CD=1.5	11 / 1.02 CD=1.5	11 / 1.02 CD=1.5	8 / 0.74 CD=1.5

Paint option only available for base tube, all other tubes will be black anodize.

**Consult factory for larger sail area as payload and wind capacities may be reduced.

GEROH **KVK**

GEROH KVK (NON-LOCKING) & KVR (LOCKING) TELESCOPING CABLE DRIVE MASTS

Extended Heights up to 45 ft. | Payload Capacity up to 132 lb

The **GEROH KVR and KVK Telescopic Cable Drive Masts** offer a lightweight yet robust mobile elevation solution, ensuring superior stability, reliability, and longevity. These telescopic mast systems, available in both non-locking [KVK] and locking [KVR] variants, are ideal for telecommunications applications, including communications, testing, surveillance, and lighting. Designed for deployment on vehicles, trailers, and shelters, they feature precision-engineered mast profiles for accurate positioning.

Equipped with two strong internal cables, powered by either a manual winch or an electric motor, these masts are protected from environmental elements. They can operate seamlessly in extreme temperatures ranging from -25°F / -32°C to $+111^{\circ}\text{F}$ / $+44^{\circ}\text{C}$, ensuring reliable performance even in harsh conditions.

- Deploy to any height
- KVR has automatic internal sectional locks which engage when section is fully deployed
 - Long-term deployment and guy line capable
- Precision machined sections and collars
 - Maintain accurate pointing
- Powerful dual internal cable drive system
 - Powered deployment and retraction in extreme environments
- Available as manual crank, analog motor, or digital motor
- Designed for trailer, shelter, or vehicle deployment
- MIL-STD 810 - F / G qualified

GEROH **KVK**

GEROH KVR



KVK [Non-locking]	120 - 2.5 KVK 3	120 - 4 KVK 4	145 - 6 KVK 4	145 - 8 KVK 5	170 - 10 KVK 5	170 - 12 KVK 6
Extended Height [ft. / m]	8.2 / 2.5	13.1 / 4	19.7 / 6	26.2 / 8	32.8 / 10	39.3 / 12
Nested Height [ft. / m]	3.5 / 1.14	4.3 / 1.34	6.3 / 1.9	6.9 / 2.1	8.2 / 2.5	8.2 / 2.5
Payload Capacity [lb / kg]	132 / 60	99 / 45	132 / 60	99 / 45	110 / 50	88 / 40
Approximate Mast Weight [lb / kg]	62 / 28	78 / 35	122 / 55	139 / 63	183 / 83	194 / 88
Number of Sections	3	4	4	5	5	6

KVR [Locking]	145 - 6 KVR 5	145 - 8 KVR 5	145 - 10 KVR 5	145 - 12 KVR 5	170 - 8 KVR 5	170 - 10 KVR 5
Extended Height [ft. / m]	20 / 6	26 / 8	32 / 10	39 / 12	26 / 8	32 / 10
Nested Height [ft. / m]	5.9 / 1.8	7.2 / 2.2	8.5 / 2.6	9.9 / 3.0	7.2 / 2.2	8.5 / 2.6
Payload Capacity [lb / kg]	110 / 50	110 / 50	99 / 45	88 / 40	110 / 50	110 / 50
Approximate Mast Weight [lb / kg]	133 / 60	148 / 67	163 / 74	176 / 80	181 / 82	201 / 91
Number of Sections	5	5	5	5	5	5

KVR [Locking]	170 - 12 KVR 5	170 - 14 KVR 5	170 - 8 KVR 6	170 - 10 KVR 6	170 - 12 KVR 6	170 - 14 KVR 6
Extended Height [ft. / m]	39 / 12	45 / 14	26 / 8	32 / 10	39 / 12	45 / 14
Nested Height [ft. / m]	9.9 / 3.0	11.2 / 3.4	6.6 / 2.0	7.6 / 2.3	8.9 / 2.7	9.9 / 3.0
Payload Capacity [lb / kg]	99 / 45	88 / 40	110 / 50	99 / 45	88 / 40	88 / 40
Approximate Mast Weight [lb / kg]	220 / 100	240 / 109	176 / 80	194 / 88	212 / 96	229 / 104
Number of Sections	5	5	6	6	6	6

Additional sizes available. Specifications are for reference only and are subject to change. Please contact Will-Burt for current and exact specifications. In addition to its masts, Will-Burt Germany also engineers and manufactures its own line of specialty single and double-axle military trailers, designed for maximum mobility with high payload capability and low curb weight.

CONTINUOUS ROTATION POSITIONIT®



PI-35 CR



PI-75 CR



PI-150 CR

POSITIONIT CONTINUOUS ROTATION PAN AND TILT POSITIONERS

for Mobile Applications

The PositionIt range of pan and tilt positioners are now available with **Continuous Rotation** panning operation. All PositionIt models include improved, next-generation control electronics and software while retaining the rugged reliability of the original PositionIt range. The updated PositionIt series is fully backwards compatible regarding connection points, electronics, and software with the previous generation. Improved motor control is assured with higher resolution speed control, slower minimum speeds, and user adjustable minimum speeds and speed ramps. The GUI for configuring and commissioning allows users to set and adjust many features that were originally factory set only. It also boasts many features such as the ability to receive positional feedback, set home position and limit stops and fault diagnostics.

- Designed, manufactured, and tested to excel in mobile applications
 - Hardened metal gears
 - MIL-STD 810 certified by independent laboratory
- Strong, lightweight construction
 - Die-cast aluminum housing
 - Stainless steel fasteners
- Regenerative Braking
 - On motor shaft
- New Graphical User Interface (GUI)
 - Greater level of control with user set features
 - Faster set-up
 - Positional feedback
- More precise than ever
 - Higher level of motor control
 - Greater positional accuracy
- Flexible Connection
 - Bottom or side
- Universal mounting plate
 - Suitable for most common payloads
- Pelco-D over RS-485 Communications
- Weather-proof
 - IP 68 Rated
- Long Operational Life
- Backwards compatible
- 2 Year warranty

POSITIONIT®



PI-12



PI-35



PI-75



PI-150

POSITIONIT PAN AND TILT POSITIONERS

for Mobile Applications



COMMUNICATIONS

Position/lt	PI-12	PI-35	PI-75	PI-150
Payload Capacity* [ft lb / Nm]	12 / 6	35 / 47	75 / 101	150 / 202
Overall Height [in. / mm]	8.9 / 225	9.7 / 246	11.32 / 287.7	11.32 / 287.7
Overall Width [in. / mm]	9.9 / 252	10.8 / 273	9.21 / 234	12.4 / 314
Overall Depth [in. / mm]	3.9 / 100	5.7 / 144	6.8 / 171	6.8 / 171
Weight [lb. / kg]	10 / 5	20 / 9	35 / 16	37 / 17
Operating Temperature [°F / °C]	-40 to 140 / -40 to 60	-40 to 140 / -40 to 60	-40 to 140 / -40 to 60	-40 to 140 / -40 to 60
IP Rating	IP68 - Waterproof	IP68 - Waterproof	IP68 - Waterproof	IP68 - Waterproof
Pan Axis	400° [± 200°]	400° [± 200°]	400° [± 200°]	400° [± 200°]
Pan Speed [proportional] [per second]	1 to 6°	1° to 12°	0.02° to 6.5°	0.02° to 6.5°
Tilt Axis	180° [± 90°]	180° [± 90°]	180° [± 90°]	180° [± 90°]
Tilt Speed [proportional] [per second]	1 to 6°	1° to 12°	0.02 to 5.5°	0.02 to 5.5°
Backlash	≤ 0.15°	≤ 0.15°	≤ 0.15°	≤ 0.15°
Repeatability	≤ 0.3°	≤ 0.3°	≤ 0.3°	≤ 0.3°
Maximum Continuous Power	44 W	44 W	44 W	44 W
Maximum Running Current	1.85 amps	1.85 amps	1.85 amps	1.85 amps
Input Voltage	24 VDC - Converters available for 12 VDC and AC power sources			

Position/lt Continuous Rotation	PI-35 CR	PI-75 CR	PI-150 CR
Payload Capacity* [ft lb / Nm]	35 / 47.45	75 / 101.68	150 / 203.37
Overall Height [in. / mm]	13.4 / 341	15.1 / 383.1	15.2 / 385.1
Overall Width [in. / mm]	10.7 / 273	11.3 / 287.02	14.6 / 370.84
Overall Depth [in. / mm]	6.1 / 154.9	7.19 / 182.67	7.19 / 182.67
Weight [lb. / kg]	25.57 / 11.6	41.45 / 18.8	46.52 / 21.1
Operating Temperature [°F / °C]	-40 to 140 / -40 to 60	-40 to 140 / -40 to 60	-40 to 140 / -40 to 60
Pan Degrees of Rotation [Continuous]	0° to 360°	0° to 360°	0° to 360°
Tilt Degrees of Rotation	+90° / -90°	+90° / -90°	+90° / -90°
Pan Speed [Proportional] [per second]	12°	6.5°	6.5°
Tilt Speed [Proportional] [per second]	12°	5.5°	5.5°
Backlash	≤ 0.15°	≤ 0.15°	≤ 0.15°
Repeatability	≤ 0.3°	≤ 0.3°	≤ 0.3°
Maximum Continuous Power	44 W	44 W	44 W
Maximum Continuous Current	1.85 amps	1.85 amps	1.85 amps
Input Voltage	24 VDC	24 VDC	24 VDC
Protocol	Pelco D used [Pelco P available]		
Ingress Protection Rating	IP68	IP68	IP68
Baud Rate	2,400 bps [Other Baud Rates Available]		

*Capacity measured at 12 inches or less from the tilt axis.
Dimensions and weights are for reference only and are subject to change. Contact Will-Burt for current engineering specifications.

Pin-Out & Flying Lead Assignment			
Pin No.	Wire Identification / Color	Assignment	Maximum Current
A	N/A	N/A	N/A
B	Red	+ ve	3 A
C	Black	- ve	3 A
D	Green	Ground	1 A [24 AWG]
E	White/Brown	AUX Data	1 A [24 AWG]
F	Brown	AUX Data	1 A [24 AWG]
G	White/Yellow	Data B	N/A
H	Yellow	Data A	N/A
J	White/Blue	AUX Data	1 A [24 AWG]
K	N/A	N/A	N/A
L	COAX [RG179]	COAX [RG179-75 Ohm]	N/A
M	Blue	AUX Data	1 A [24 AWG]

Cable Assembly Specification	
Connector Type	Circular Connector, 12 Way
Cable Type	10 Core Composite Cable
Voltage Rating	24v
Max Current Rating	3A
Temperature Range [°F / °C]	-40 to +80
Ingress Protection	IP68 Connector

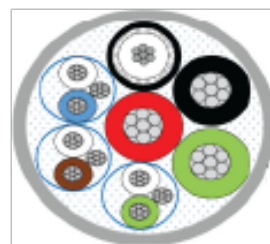
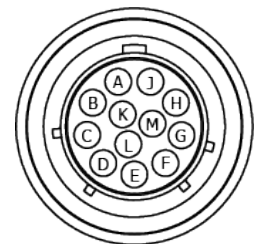


Image to show twisted pair data cables for clarity with pin-out table



Connector Face

HANDHELD CONTROLLER

The Pelco-D compatible handheld controller with LED screen has all of the features necessary to optimize the performance of the PositionIt positioner. The precision 4D joystick controller flawlessly controls the pan and tilt functions. Includes LED screen, keyboard and programmable presets that simplify operation. The positioner handheld controller can also be optionally used in conjunction with the pan and tilt positioner controller.



Input Voltage	12V DC
Communication Interface	RS485
Operating Temperature [°F / °C]	15 - 131 / 0 - 55
Dimensions [L x W x H] [in. / mm]	6.2 x 5.9 x 4.2 / 458 x 150 x 107

POSITIONIT CONTROLLERS

Handheld Controller | Rack Mount Controller

RACK MOUNT CONTROLLER

The 19-inch [2U] Rack Mount Positioner Controller from Will-Burt is loaded with new features. You will always know the status of the positioner with real-time positional, speed, and status feedback. Control multiple positioners and third-party equipment with a single controller. This controller is optimized for positioners with stow and deploy buttons located on the front panel.



The latest Positioner Controller from Will-Burt will simplify deployment and operation of communications and video equipment.

- LCD Home Screen displays real-time positioner information
- LCD Selector Menu provides additional control functionality
- Control third-party equipment through [7] digital discrete outputs with USB and RS-485 inputs
- Control multiple positioners in single system through address selection
- Positioner control with front panel directional push buttons and configurable 'Stow' & 'Unstow' presets
- Pelco-D over RS-485 half-duplex output to positioner
- 100-240VAC input voltage with 24VDC output voltage to positioner

Input Voltage	100-240VAC
Output Voltage	24VDC
Communication Interface	Pelco-D over RS-485 half-duplex at 2400 bps
Operating Temperature [°F / °C]	32 to 122 / 0 to 50
Dimensions [in. / cm]	19 x 3.5 x 11.7 / 48.26 x 8.81 x 29
Weight [lb. / kg]	6.6 / 3





Steel Telescoping Tower
Integrated Trailer System



Telescoping Pneumatic Mast
Integrated Trailer System



Aluminum Telescoping Tower
Integrated Trailer System

WILL-BURT INTEGRATION & ELEVATION SYSTEMS

Extended Heights up to 130 ft. | Payload Capacity up to 1,200 lb

The Will-Burt Company, with the acquisition of Aluma Tower and Integrated Tower Systems [ITS] now offers integrated Telescoping Steel and Aluminum Tower Systems AND Telescoping Mast Systems - an elevation solution for every need! Will-Burt is a global leader in the design, manufacture, sales and rental of an extensive and affordable line of rapid-deployment Mobile Tower & Mast Systems; Tower & Mast Integrated Trailers, Trucks, Communication-Site-on-Wheels [COWs], and Mast-, Satellite- and Tower-Integrated Mobile Command and Communication Centers. This state-of-the-art equipment is designed specifically to support a global contingent of clientele representing the following industries:

- Telecommunications, Infrastructure Development / Restoration; Tower Owners/Operators
Multi-media, Broadcasting
- First Responder, Public Safety and Emergency Management; Law Enforcement, Incident
Command, Search & Rescue
- National Security / Homeland Defense, Domestic & Foreign Military Initiatives; Tactical,
Support Functions, and Counter UAS
- Border Security, Immigration and Customs Enforcement; Disaster Preparedness/
Emergency Response
- Geophysical, Oil & Gas and Alternative Energy; Meteorological, Frequency and Weapon
Systems Testing
- Transportation, Aviation, Aerospace and Construction; Entertainment, Logistics,
Engineering, Municipal & Corporate Programs
- Global Support of Special Events; Political, Commercial, Industrial, Sporting, Civic and
Numerous other Industries



Will-Burt's innovative rapid response systems are manufactured to both civilian and military specifications and built to withstand many of the world's most demanding environments. Will-Burt controls every aspect of manufacture and assembly through an ISO 9001:2015 certified quality management system in all manufacturing locations. Will-Burt's engineering expertise and vertical integration capabilities allows for efficient COTS products and unique custom designs for the seamless installation of common or client-specific technologies, or pre-integrated with a Will-Burt or client-furnished Communications, Surveillance, or Counter UAS Solutions. Will-Burt's rapidly deployed systems are proven key components in establishing the flow of vital information from remote and urban areas of need.



COMMON USES

- Broadcast
- Lighting
- Disaster Recovery / Emergency Response
- Border Security
- Surveillance
- Remote Communications Site Security
- Sensor Applications
- Systems Testing
- Energy Exploration / Production Sites
- Telecommunications
- Temporary Cell Site
- Lightning Protection
- Counter UAS

INTEGRATED TELESCOPING STEEL TOWER SYSTEMS

Self-Support & Guyed Heights [ft. / m]

38 / 11.6 | 55 / 16.8 | 72 / 21.9 | 89 / 27.1 | 106 / 32.3 | 120 / 36.6 | 130 / 39.6

Representative Sample - Contact Will-Burt for Additional Options

SRS-C SERIES - PORTABLE TOWER TRAILER



SR SERIES - MOBILE TOWER TRAILER

[Multiterrain Configuration]



IT SERIES - MOBILE TOWER TRAILER

[Urban Configuration]



INTEGRATED TELESCOPING STEEL TOWER SYSTEMS

Standard Payload Capacity (lb / kg): up to 550 / 250

Upgraded Payload Capacity (lb / kg): up to 625 / 284

Flexi-Fleet rental tower and mast systems are ready for deployment in case of emergencies

NC/SR SERIES – COMMUNICATION-SITE-ON-WHEELS [COW] TOWER TRAILER



TMT SERIES – TRUCK MOUNTED TOWER SYSTEM



SKD SERIES – SKID MOUNTED



INTEGRATED TELESCOPING MAST SYSTEMS

Self-Support & Guyed Heights (ft. / m): Ranges 30 / 9 to 120 / 36
Tower Payload Capacity (lb / kg): up to 1,200 / 544

Representative Sample - Contact Will-Burt for Additional Options

RAPID DEPLOYMENT ELEVATION SYSTEM



ULTRA MAST - INTEGRATED SURVEILLANCE SYSTEM



INTEGRATED TELESCOPING MAST SYSTEMS

Self-Support & Guyed Extended Heights (ft. / m): up to 120 / 36
Tower Payload Capacity (lb / kg): up to 1,200 / 544

Flexi-Fleet rental tower and mast systems are ready for deployment in case of emergencies

COW SERIES – TRAILER MOUNTED MAST

[Vertical Mast Installation]



RD-S & RD-T SERIES – TRAILER MOUNTED MAST

[Multiterrain Configuration]



RD-S Series – Single Axle

RD-T Series – Tandem Axle

LC SERIES & MT SERIES – TRAILER MOUNTED MAST

[Urban Configuration]



LC Series – Single Axle

MT Series – Tandem Axle

INTEGRATED TELESCOPING ALUMINUM TOWER SYSTEMS

Guyed Extended Heights (ft. / m): Ranges 39 / 11.8 to 106 / 32

Unguyed Extended Heights (ft. / m): Ranges 39 / 11.8 to 92 / 28

Representative Sample - Contact Will-Burt for Additional Options

TM53-70 SUPER SCORPION



Patented Tower Section Slide System

Increases tower stability by reducing tower section movement when deployed

Self-Monitoring Systems available with SMARTtower® Technology

Automatically retracts tower or sends SMS message in severe weather allowing you to make the final decision

TM55-90



S812 WITH SHELTER



INTEGRATED TELESCOPING ALUMINUM TOWER SYSTEMS

Guyed Tower Capacity (lb / kg): Ranges 50 / 22 to 275 / 124

Unguyed Tower Capacity (lb / kg): Ranges 350 / 158 to 600 / 272

Flexi-Fleet rental tower and mast systems are ready for deployment in case of emergencies

SKID SYSTEM



TM12



CUSTOM SOLUTIONS



CONTACT YOUR SALES REPRESENTATIVE TODAY



Contact Us
Complete a Contact Form

WILL-BURT NORTH AMERICA
WORLD HEADQUARTERS

401 Collins Boulevard, Orrville, OH 44667 USA
Telephone: +1 330 682 7015
Mast Customer Service: +1 330 684 4000
Fax: +1 330 684 1190
Email: info@willburt.com

WILL-BURT
UNITED KINGDOM

Unit 5b, Station Approach, Four Marks,
Alton Hampshire, GU34 5HN, United Kingdom
Telephone: +44 (0) 1403 265532
Fax: +44 (0) 1403 259072
Email: info@willburt.com

WILL-BURT INTEGRATION
ALUMA TOWER | ITS

7750 9th Street SW
Vero Beach, FL 32968 USA
Telephone: +1 772 567 3423 | +1 800 850 8535
Fax: +1 772 567 3432
Aluma Tower Email: info@alumatower.com
ITS Email: programs@itstowers.com

WILL-BURT ASIA
SINGAPORE SALES OFFICE

1 Fullerton Road, #02-01
One Fullerton, Singapore 049213
Telephone: +65 6832 5689
Fax: +65 6722 0664
Email: info@willburt.com

WILL-BURT
GERMANY

Fischerergasse 25
D-91344 Waischenfeld, Germany
Telephone: +49 9202 180
Fax: +49 9202 1811
Email: info@willburt.com

CLARK MASTS
A WILL-BURT COMPANY

18-20 Ringwood Road, Binstead,
Isle of Wight, PO33 3PA, England
Telephone: +44 (0) 1983 563691/567090
Fax: +44 (0) 1983 566643/811157
E-mail: sales@clarkmasts.com

The Will-Burt Company, headquartered in Orrville, Ohio, USA, is the world's premier manufacturer of mobile telescoping masts, towers and pan and tilt positioners. We offer virtually every mobile payload elevation and integration solution for defense, government, first responders, cellular and mobile, broadcast, energy production and other markets. Will-Burt also offers contract manufacturing, metal fabrication, powder-coating, and rapid prototyping services. Will-Burt is an international company with offices and manufacturing in the USA, England, and Germany along with offices in Singapore. All Will-Burt Company manufacturing locations are backed by a certified ISO 9001:2015 Quality Management System. Incorporated in 1918, Will-Burt is 100% employee-owned and is classified as a small business.

*Disclaimer: Dimensions and weights are for reference only and are subject to change.
Please contact Will-Burt for current engineering specifications.*



Will-Burt Terms and Conditions of Sale:
<https://www.willburt.com/support/service/will-burt-terms-conditions-of-sale/>

January, 2026
The Will-Burt Company
ISO 9001:2015
INNOVATION ELEVATED®