



CLARK SERIES FIELD / VEHICLE / SHELTER



Since the late 1950s, Clark Masts has been at the forefront of designing and manufacturing fast-erecting pneumatic telescopic and sectional mast systems for both commercial and defense applications.

In 2023, we proudly joined forces with The Will-Burt Company, uniting two of the most esteemed names in the mobile elevation industry. This strategic acquisition has further strengthened our capabilities and expanded our reach.

Our masts are trusted and deployed worldwide, a testament to our commitment to excellence. At Clark Masts, we continuously strive to lead the industry by staying ahead of advancements in communications technology, ensuring we provide the most effective solutions for tactical mast requirements that meet the rigors of MIL STD 810F.

In recent years, we have secured significant defense and commercial contracts across the globe, including in Europe, Australia, Singapore, the Middle East, Asia, and the United States. Our original designs are meticulously crafted in our own manufacturing plants, where we also produce spare parts and publish comprehensive technical documentation.

Our state-of-the-art CNC machining, fabrication, and assembly facilities enable us to uphold the highest standards of quality and precision. With manufacturing and sales operations based in England and Belgium, and leveraging Will-Burt's global sales and service network, we are well-positioned to provide immediate and thorough attention to your needs.

The Advantages of Clark Series Masts

- High strength / Lightweight Aluminum Alloy
- Locking or Non-locking collars
- Rotatable or Non-rotatable masts
- Field / Vehicle / Shelter Mounting Options
- Full range of accessories
- Worldwide service and support from Will-Burt

**CLARK
MASTS**
A WILL-BURT COMPANY



TABLE OF CONTENTS



4-7

**QT SERIES
MASTS**



8-11

**ST / NT / MT SERIES
MASTS**



12-15

**PT / YT SERIES
MASTS**



16-19

**DAF SERIES
MASTS**



20-23

**OPTIONAL
ACCESSORIES**



24-25

QUADPOD



26-27

**QUADPOD WITH
MAST KIT**



28-35

SECTIONAL MASTS



CLARK SERIES QT PNEUMATIC MASTS

Extended Heights up to 49.2 ft. | Payload Capacity up to 49.6 lb

The QT Range of lightweight telescopic pneumatic masts are designed to be portable and erected quickly where they are required. Available in a wide range of heights from 3m to 15m and in a range of sizes to suit varying payloads. It is a highly versatile system capable of being field mounted using a folding tripod stand. Equally at home when mounted to a vehicle or shelter, the QT Range is designed to be versatile. Made from high strength 16 swg aluminum tube, to save weight, the QT Range is non-keyed, allowing for easy payload pointing and each section is fitted with a locking collar. Payloads are quickly attached using the quick clamp 24mm socket with a variety of available payload adapters.

Technical Specifications

- Heights 13.1 ft [4m] to 49.2 ft [15m]
- Payloads up to 49.6 lb [22.5 kg]
- Aluminum alloy sections
- Handpump
- Mounting Studs M8
- Water drain plug
- Air release screw
- Section locks
- Guy collar
- Quick clamp [24mm] for payloads
- Field / Vehicle / Shelter Deployment
- Wide variety of accessories available
- Dry operating temperatures
 - -40°F to 131°F [-40°C to 55°C]





CLARK QT SERIES MK VI TRIPOD

Suitable for Non-rotatable Masts up to 49.2 ft.



All MK VI tripods can either be stored vertically or horizontally and suitable for non-rotatable masts up to 15 meters. Additionally, a tripod mounting bracket is available for all QT models, allowing the mast to be fixed onto a wall, vehicle, or shelter. A ground, vehicle, or shelter tripod is equipped with a locking block which enables the user to attach this tripod to the tripod mounting bracket for compact vertical storage, with or without the mast.



Specifications

Clark Series	Base Tube [in.]	Number of Sections	Minimum Height [m]		Maximum Height [m]		Payload Capacity [kg]	
			Stow	Extended	Stow	Extended	Minimum	Maximum
QTL	2.00	4	1.35	4.00	1.90	6.00	4.5	4.5
QT	2.50	4	1.35	4.00	1.90	6.10	10.0	10.0
QT	2.50	5	1.40	5.00	1.40	5.00	6.0	6.0
QT	2.50	6	1.10	4.25	2.10	10.00	4.5	4.5
SQT	3.00	4	1.05	3.00	1.90	6.00	20.5	22.5
SQT	3.00	5	2.25	9.00	2.25	9.00	18.0	18.0
SQT	3.00	6	1.10	4.30	2.70	12.20	10.0	12.5
SQT	3.00	7	1.00	4.00	2.80	15.00	2.5	6.0
SQT	3.00	8	1.20	5.90	2.00	11.55	2.5	2.5
QTX	3.50	5	2.25	9.00	2.25	9.00	20.0	20.0
*QTX	3.50	6	1.05			4.00		20.0
*QTX	3.50	6	1.50			6.10		20.0
*QTX	3.50	6	1.80			7.95		20.0
*QTX	3.50	6	2.20			10.15		18.0
*QTX	3.50	6	2.65			12.20		15.0
*QTX	3.50	7	2.80			15.00		10.0
QTX	3.50	7	1.50	7.00	2.80	15.00	10.0	18.0
QTX	3.50	8	1.20	6.05	2.60	15.00	6.0	10.0
QTX	3.50	9	2.40	15.00	2.40	15.00	2.5	2.5

*US Stock CLR ADZ

Mk VI Tripod Part Number	Extended Height [ft. / m]	Weight [lb. / kg]
CM-36585	13.1 / 4	25.2 / 11.4
CM-36586	19.7 / 6	28.0 / 12.7
CM-36587	26.3 / 8	30.9 / 14.0
CM-36588	32.8 / 10	34.0 / 15.4
CM-36589	39.4 / 12	36.9 / 16.7
CM-36590	49.2 / 15	40.0 / 18.0

Tripod Mounting Bracket

CM-36592-SG All Mk VI models



Tripod Mounting Bracket



Tripod Mounting Bracket with Tripod Stand Mounted



Tripod Mounting Bracket with Tripod Stand and Mast Mounted

Clark QT Series Accessories

**Mast Wall Mounting Bracket**

For permanent fixture of the mast, used in pairs.

**Wheel Mounting Bracket**

For temporary fixture of a mast using the weight of a vehicle. | CM-33770

**Mast Mounting Ring**

For permanent fixture of the mast, used in combination with the mast mounting studs. Used in pairs.

**2" Hitch Mount Assembly**

Use 2" vehicle receiver hitch to mount and deploy the mast – all hardware included. Used in pairs. 6022901-PA09

**Saddle Clamp**

For non-permanent fixture of the mast, making the mast instantly removable. Used in pairs.

**Roof Bearing**

All roof bearings are foreseen with rubber seals to avoid water infiltration.

**Mounting Post**

Can be mounted on suitable level surface to deploy the mast – mast mounting hardware included. 6023101-PA09

**Base Mounting Bracket**

Used in combination with a roof bearing.

**Canvas Cover**

Light-grey canvas cover for mast head protection against dust, rain and snow. CM-36388-SG

**Guying Kit**

1 Level Guy
[Up to 33 ft. / 10m]

2 Level Guy
[33 ft. / 10m and above]
CM-29324-SG

**Handpump Canvas Cover**

Canvas cover for handpump protection, against dust, rain and snow. CM-50472-SG



CLARK SERIES ST / NT / MT PNEUMATIC MASTS

Extended Heights up to 52.4 ft. | Payload Capacity up to 66.1 lb

Will-Burt's Clark Series ST, NT, and MT are lightweight enough to allow for easy field portability and strong enough to manage significant payloads whether in the field, in a vehicle, or on a shelter. The tube sets are more robust than the QT and have full-length keys to minimize twist. Available with locking or non-locking collars and rotatable and non-rotatable versions, this series of telescoping masts offer the ultimate in flexibility.

Available with a variety of payload adapters, the Clark Series ST / NT / MT are sure to meet your stringent requirements.

Technical Specifications

- Heights from 2.51m to 16m
- Payloads from 5 kg to 30 kg
- 6082T6 aircraft grade seamless drawn aluminum tubes
- Full-length sectional keys to minimize twist
- Rotating and Non-rotating versions
- Locking and Non-locking collars available
- Powerful quick clamp (24mm) for payloads
- Field / Vehicle / Shelter Deployment
- Wide variety of accessories available
- Optional mast extension warning switch
- Must be ordered at time of build
- Manual pump or compressor options
- Dry operating temperatures
 - -40°F to 131°F [-40°C to 55°C]



Key Features



1. Powerful low-friction antenna clamp [Flang mount optional]
2. Rotating Guy Collar
3. Large handles for easy section locking
4. Easily replaced frangible key protecting mast keyway
5. Totally enclosed telescopic section locking system
6. Collet Ring [Locks section on full extension]
7. Adjustable bearing screws
8. Optional water drain hole
9. Machined keyway aligning telescoping sections
10. High tensile corrosion resistant aluminum alloy tube anodized finish
11. Double Supertork notched locking sections on torsion when the mast is fully extended
12. Exclusive natural rubber low leak seals
13. Teflon bearing rings on each piston
14. Location of optional mast extension warning switch [factory fitted only]
15. Combined pressure relief and condensate drain valve
16. Air inlet



Available with optional extension warning switch

Alternative Collars and Bases available for varied application and Field or Vehicle Installation



Plain Collars



Locking Collars



Fixed Base



Rotatable Base



Field Base

Specifications

Clark Series	Base Tube [in.]	Number of Sections	Minimum Height [m]		Maximum Height [m]		Payload Capacity [kg]	
			Stow	Extended	Stow	Extended	Minimum	Maximum
STX-N 3	3.00	3	1.35	2.51	3.72	9.06	20.0	30.0
ST-N 4	3.00	4	1.50	4.51	2.82	9.06	15.0	20.0
ST-N 5	3.00	5	1.40	4.88	2.47	9.20	7.0	9.0
NT-N 4	3.5	4	1.39	4.00	2.48	8.05	25.0	30.0
NT-N 5	3.5	5	1.65	6.00	2.65	10.05	15.0	20.0
NT-N 6	3.5	6	1.67	6.00	2.79	12.00	5.0	9.0
MT-N 5	4.0	5	1.67	6.00	4.08	16.00	15.0	30.0
MT-N 6	4.0	6	2.13	9.00	3.56	16.00	10.0	15.0



Deployment Options

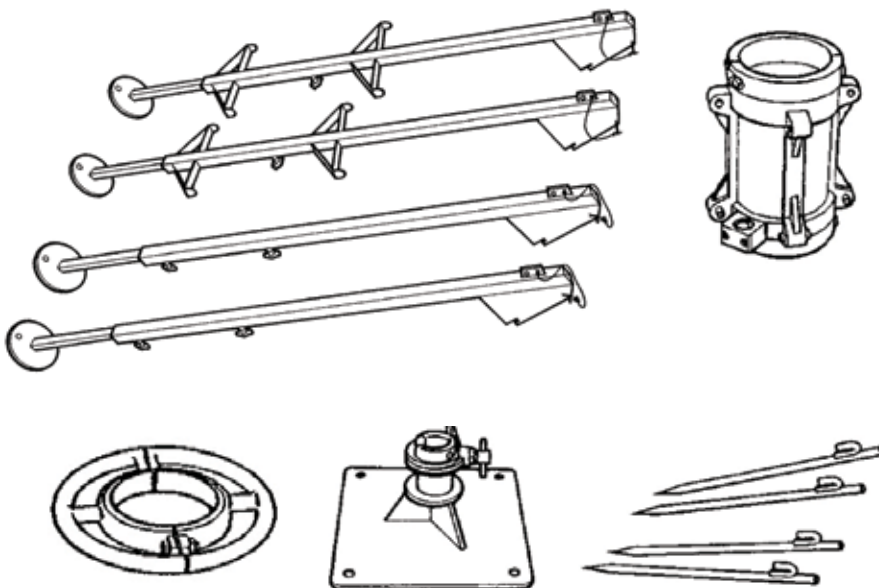
ST / NT Series MK VI Tripod

The ST and NT masts are mounted on a MK VI stainless steel folding tripod stand, which is easily transported when folded (pictured below).



MT Series Field Leg Assembly

The assembly consists of four adjustable legs which connect to an alloy collar. Wheel handle, spikes and mast base are included. | Weight: 50.91 kg





CLARK SERIES PT / YT PNEUMATIC MASTS

Extended Heights up to 68.8 ft. | Payload Capacity up to 132.2 lb

Discover the perfect blend of portability and strength with Will-Burt's Clark Series PT and YT telescoping masts. Designed for easy transport and robust performance, these masts excel in various environments—whether deployed in the field, mounted on vehicles, or integrated into shelters.

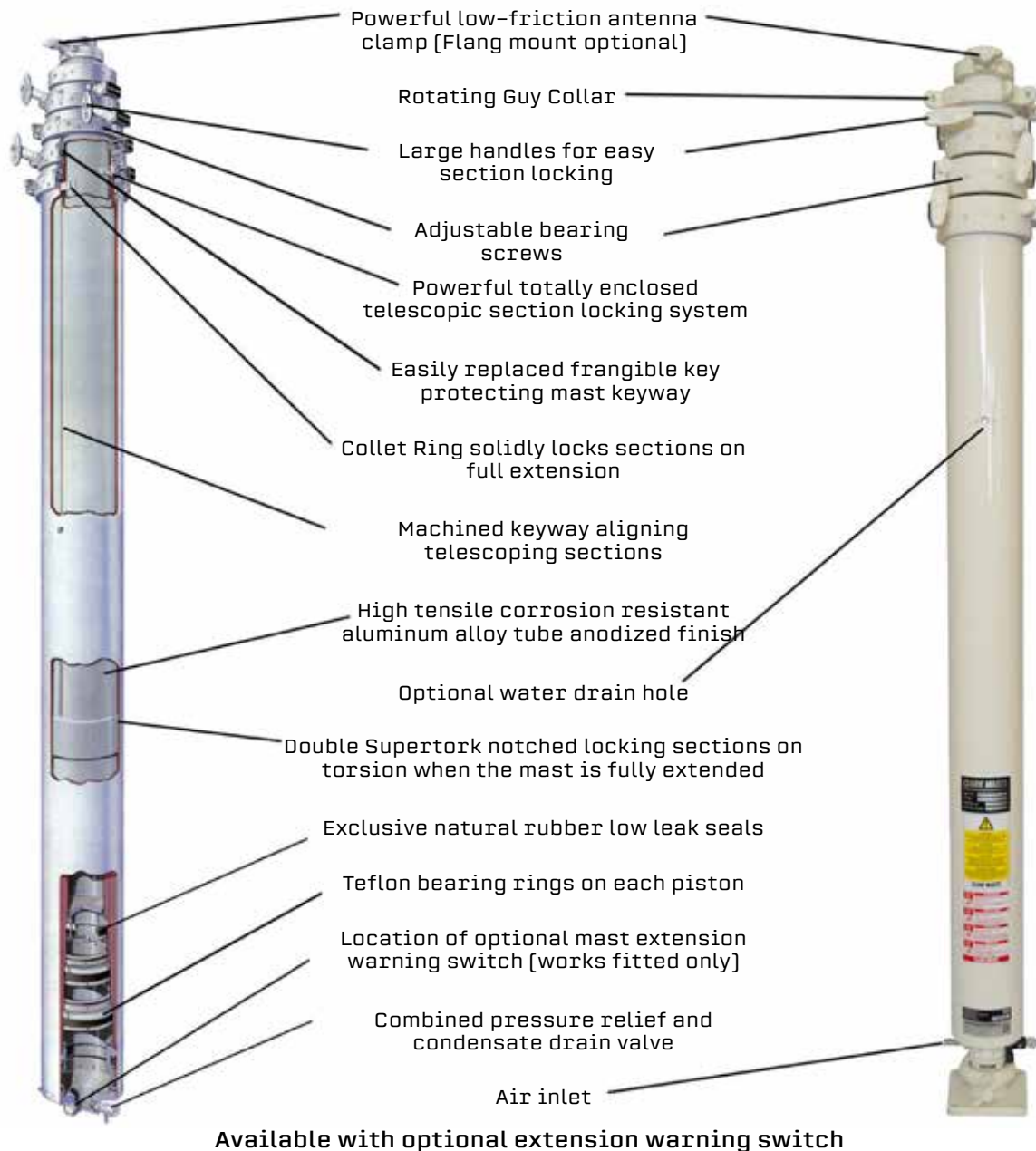
Engineered with enhanced tube sets that surpass the QT series, the Clark Series PT and YT feature full-length keys to significantly reduce twist. Choose from locking or non-locking collars and rotatable or non-rotatable versions to suit your specific needs. This series offers unparalleled flexibility and adaptability.

With a wide range of payload adapters available, the Clark Series PT and YT are equipped to meet even the most demanding requirements. Experience the ultimate in versatility and reliability with these exceptional telescoping masts.

Technical Specifications

- Heights from 7m to 21m
- Payloads from 8 kg to 60 kg
- 6082T6 aircraft grade seamless drawn aluminum tubes
- Full-length sectional keys to minimize twist
- Rotating and Non-rotating versions
- Locking and Non-locking collars available
- Powerful quick clamp (24mm) for payloads
- Field / Vehicle / Shelter Deployment
- Internal cable option for sizes up to 7m
- Optional mast extension warning switch
 - Must be ordered at time of build and increases stowed height
- Wide variety of accessories available
- Manual pump or compressor options
- Dry operating temperatures
 - -40°F to 131°F [-40°C to 55°C]

Key Features



Alternative Collars and Bases available for varied application and Field or Vehicle Installation



Plain Collars



Locking Collars



Fixed Base



Rotatable Base



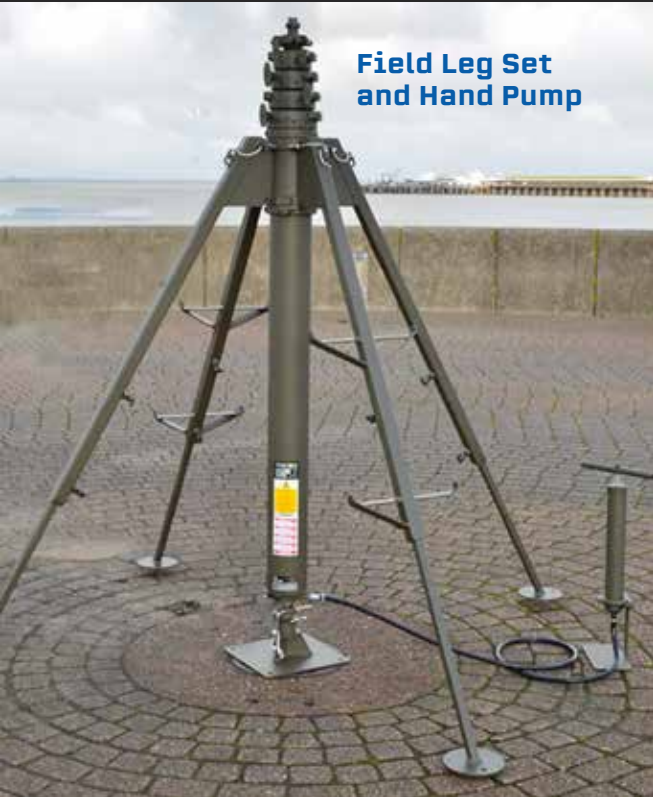
Field Base

Specifications

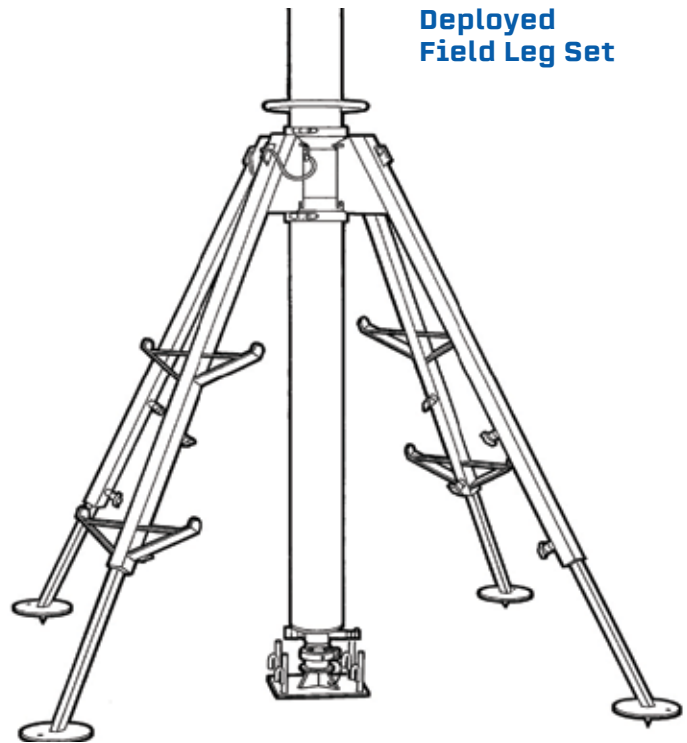
Clark Series	Base Tube [in.]	Number of Sections	Minimum Height [m]		Maximum Height [m]		Payload Capacity [kg]	
			Stow	Extended	Stow	Extended	Minimum	Maximum
PT-NP 4	4.50	4	1.35	3.00	2.41	7.00	50.0	60.0
PT-NP 5	4.50	5	1.35	4.00	4.98	18.37	25.0	50.0
PT-NP 6	4.50	6	1.45	5.00	3.41	15.37	20.0	30.0
PT-NP 7	4.50	7	1.35	4.00	4.18	21.07	10.0	20.0
YT-NP 6	5.00	6	1.56	6.00	4.42	21.16	20.0	40.0
YT-NP 7	5.00	7	1.75	8.00	3.98	21.00	15.0	25.0
YT-NP 8	5.00	8	1.67	8.52	3.85	21.00	8.0	15.0



Deployment Options



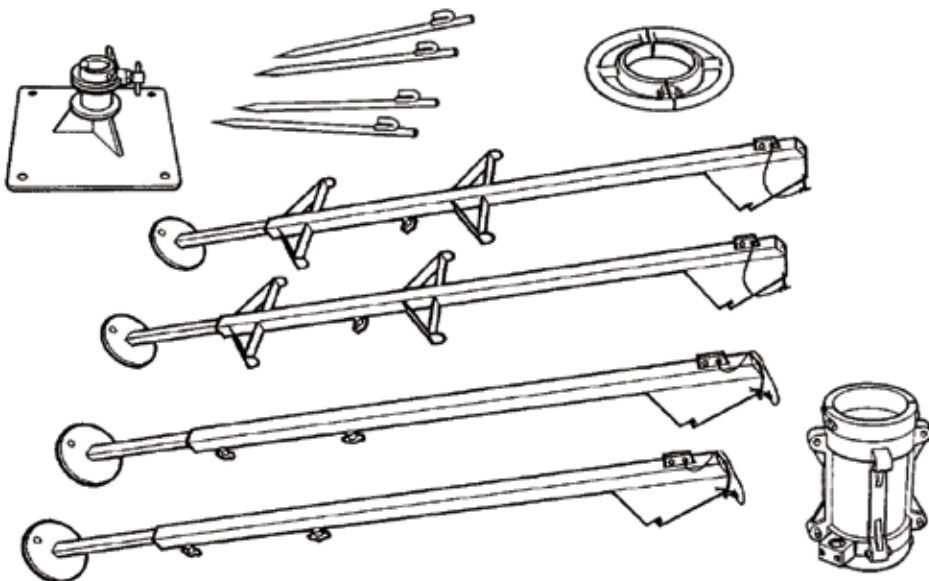
**Field Leg Set
and Hand Pump**



**Deployed
Field Leg Set**

PT / YT Series Field Leg Assembly

The assembly consists of four adjustable legs which connect to an alloy collar. Wheel handle, spikes and mast base are included. | Weight: 52.55 kg





CLARK SERIES DAF PNEUMATIC MASTS

Extended Heights up to 40.5 ft. | Payload Capacity up to 77.1 lb

Will-Burt's Clark DAF (which stands for Deployable Antenna Field) Series are based on ST and NT Series masts fitted with integral field legs. They are fitted with an integral hand pump for extension and have four telescopic adjustable steel field legs for field mounting. The masts are made from high strength 3.25mm wall anodized aluminum tube with a full-length keyway machined into each telescopic section.

The Clark DAF is a system ready for field deployment.
[Specific payload adapter required]

Technical Specifications

- Heights from 4.5m to 12.35m
- Payloads from 10 kg to 35 kg
- 6082T6 aircraft grade seamless drawn aluminum tubes
- Full-length sectional keys to minimize twist
- Locking collars and Non-rotating
- Powerful quick clamp (24mm) for payloads
- Field Deployment
- Guy Kit included
- Attached field legs and stakes included
- Manual pump attached and included
- Dry operating temperatures
 - -40°F to 131°F [-40°C to 55°C]



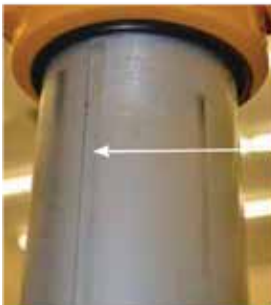
Key Features



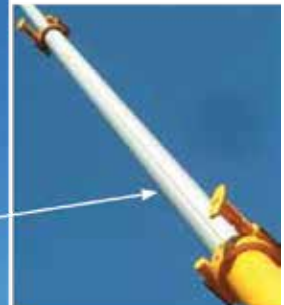
24 mm Top Socket and Guy Collar



Large Handles for easy clamping



Machined Keyway aligning telescopic sections



High tensile corrosion resistant anodized aluminium sections



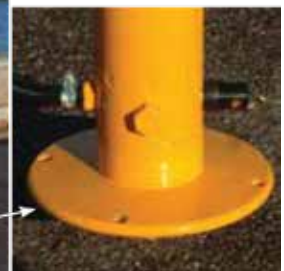
Integral Hand pump



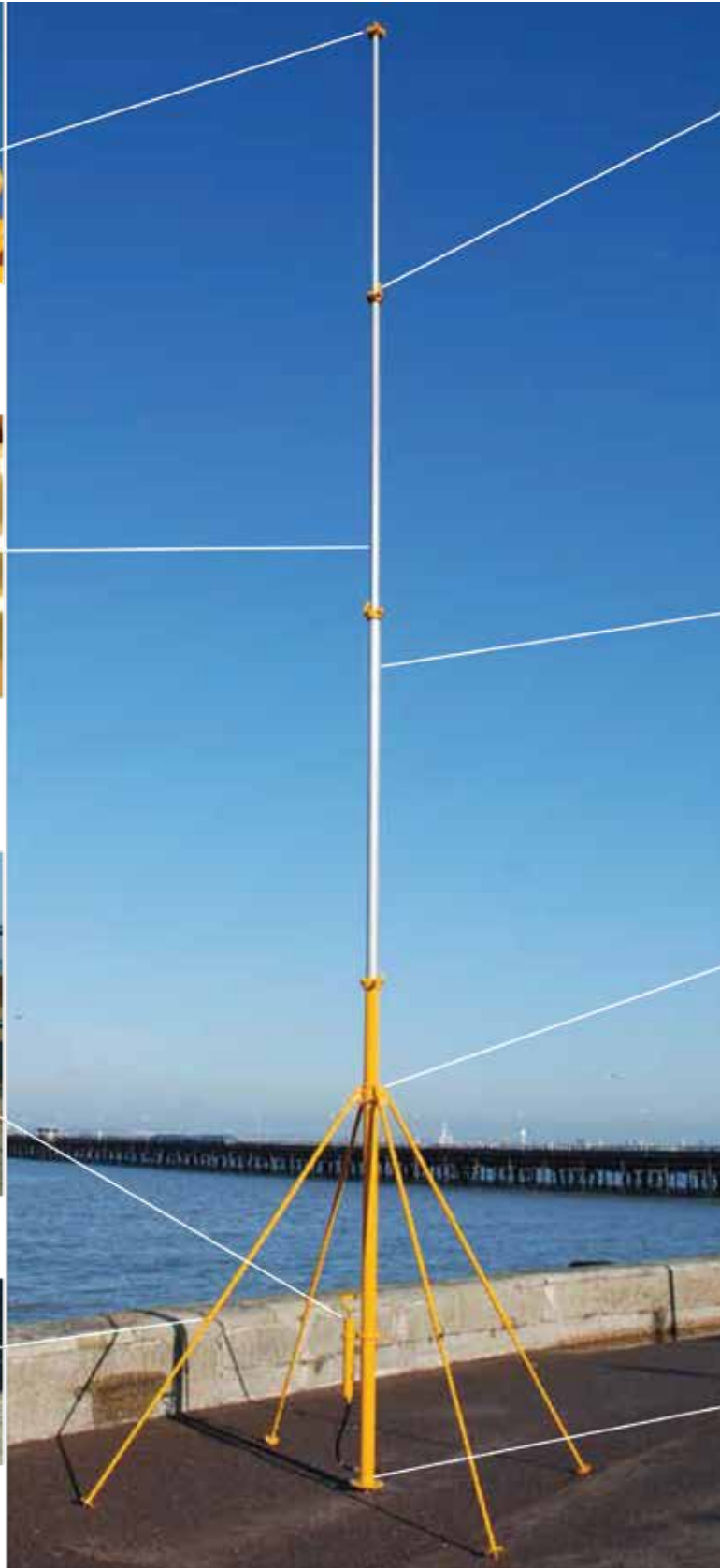
Field Leg Collar



Adjustable spiked Field Legs



Base with Air inlet, Pressure Relief/ Drain Valve and Ground Spike holes.



Specifications

Clark Series	Base Tube [in.]	Number of Sections	Minimum Height [m]		Maximum Height [m]		Payload Capacity [kg]	
			Stow	Extended	Stow	Extended	Minimum	Maximum
DAF/ST	3.00	4	1.60	4.50	4.00	12.35	10.0	20.0
DAF/NT	3.50	4	1.60	4.50	4.00	12.35	20.0	35.0
DAF/NT	3.50	5	1.78	6.00	3.20	12.00	10.0	20.0



Deployable Antenna Field (DAF) Kit



Item	Title	Quantity per Kit
1	DAF Mast	1
2	Accessory Bag	1
3	Guy Assembly	3
4	Hammer	1
5	Spikes	4
6	Pickets	3



CLARK SERIES OPTIONAL ACCESSORIES

ST / NT / MT / PT and YT Series Masts

Mast Mounting Hardware Options [may vary by mast size]



Upper Mounting Bracket

Used to mount the mast externally on a vehicle, wall, or shelter. Allows the mast to rotate 360° and is fitted with PTFE bearing pads.



Lower Mounting Bracket

Used for externally mounting the mast on a vertical surface of a vehicle.



Saddle Clamp

Allows the mast to be mounted on vertical or horizontal surfaces and to be quickly released when required.



Roof Bearing

Used when fitting a mast through the roof of a vehicle. Allows 360° rotation and is fitted with PTFE bearings and a weatherproof ring.



Guy Kit

For added stability in windy conditions or for taller masts.



Guy Winch Controller

A purpose made guy winch controller allows guy wire ropes to be controlled from one position and kept in tension.

Protection Cover Options [may vary by mast size]



Compressor Cover

Heavy duty nylon canvas cover for trailer masts compressor unit, which protects the compressor unit during road transport.



Guy Winch Cover

A heavy-duty nylon canvas cover to protect the guy winch controller and guy ropes when not in use.



Hand Pump Cover

[pump attached to mast]
Heavy duty nylon canvas hand pump cover protects from dust, rain, and snow



Mast Head Cover

Heavy duty nylon canvas head cover, protects the mast head when mast retracted, available to suit all sizes of mast

CLARK SERIES OPTIONAL ACCESSORIES

ST / NT / MT / PT and YT Series Masts

Cable Management Options [will vary by mast size]



Spreader Bar Assembly

A spreader bar assembly to hold the Nycoil tubing at the mast head complete with 24mm quick clamp fitting for antenna.



Nycoil Assembly

Used in conjunction with a spreader bar fitted to the mast head to guide, protect and manage cables for equipment fitted to the mast.



Nycoil Basket

A basket assembly which fits around the mast to retain the Nycoil assembly when the mast is retracted, made to suit mast diameter.



Feeder Cable Strap

Fastens around mast tube sections with location lug to control antenna cabling.



Coiled Cable Guide

A metal cable guide which can accept the cable via the split ring allowing insertion and removal of the cable when using a detachable headload.



Remcleat

A simple cable clamp system which attaches to the mast collar to retain external cables.

Pneumatic Systems Options [may vary by mast size]



Hand Pump

Suitable for use with all pneumatic telescopic masts and its high capacity makes it ideal as an air source in the field, vehicle mounted or as a back up unit.



Twin Cylinder Foot Pump

This external, lightweight, and compact foot pump allows the user to extend the mast with ease. Supplied with 3 metre hose and bayonet plug.



Air Compressor

Powered either by vehicle 12 or 24v DC or by shore power 110 or 230v AC. A built-in pressure switch cuts out when the mast reaches its preset level and cuts in only when required to top up the pressure thereby saving battery power. Supplied with power connection plug. Optional wired remote control available.

CLARK SERIES OPTIONAL ACCESSORIES

ST / NT / MT / PT and YT Series Masts

Additional Hardware Options [may vary by mast size]



Internal Mast-Up Warning Switch

Operated from ground level to rotate antenna position on a non turning mast using a rope pull system. Fits into the top socket of the mast.



Internal Rotator

Operated from ground level to rotate antenna position on a non turning mast using a rope pull system. Fits into the top socket of the mast.



Antenna Tilter

The user operates the antenna tilter from ground level by rope control. The diameter of the spigot and antenna clamp is 24 mm. Suitable for antennas up to 10 kg.



Security Locks

On masts fitted with Combined Collar [Locking collar] masts, the standard handles can be replaced with domed hexagon nuts for extra security. A hexagon key tool is required for operation.



Side Handles

This side handle clamps to the mast to provide a turning handle on a rotatable mast.



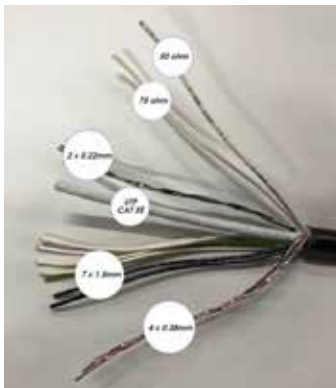
Graduated Collar

Used for masts requiring directional bearing references. Indexed 0 to 360°.

Wheel Handle

This solid aluminum handle is fitted to the 6" base tube of the mast when rotation is required.

PT / YT Series Specific Options [may vary by mast size]



Internal Cables

PT or YT masts up to 7m in height can be fitted with an internal extendable cable. Cable entry and junction is provided by base housing and top housing. A choice of electrical and screened cables can be supplied.



Vehicle Bracket Set

Special Upper Mounting Bracket and adjustable Lower Mounting Bracket.

CLARK SERIES OPTIONAL ACCESSORIES

QT / ST / NT / MT / PT / YT and DAF Series Masts

Top Adapters for All Masts with 24mm Quick Clamp



Top Adapter

The adapter has a circular flange to accept universal camera fixing bolts. Features a central cable routing facility for end fed cameras.
CM-604530B



Camera Adapter

A 24mm spigot adapter to fit the standard camera thread [1/4" whitworth] which allows rapid mounting of equipment and cameras to a Clark mast.
CM-29442-SG



Small Universal Antenna Adapter

Mount a variety of payload equipment.
CM-1344-SG



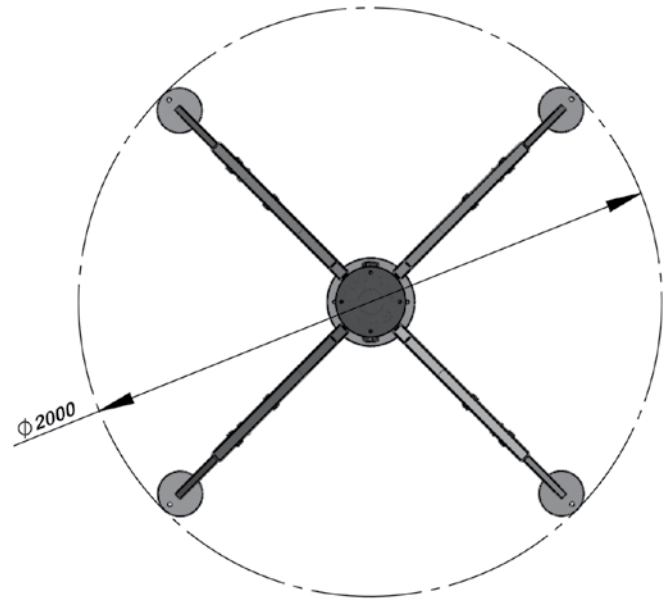
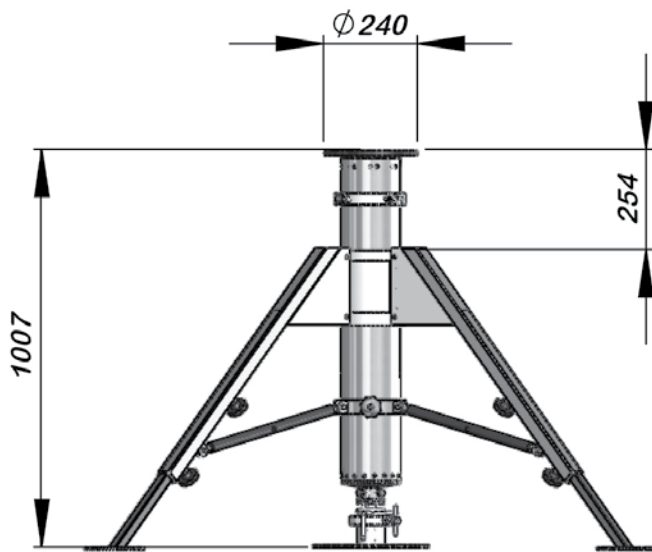
Large Universal Antenna Adapter

Mount a variety of payload equipment.
CM-8999-SG



Solid Straight Adapter

600mm extension adapter.
CM-49705-SG



Dimensions

CLARK SERIES QUADPOD PNEUMATIC MASTS

Extended Heights up to 3.5 ft. | Payload Capacity up to 551.1 lb

Will-Burt's Clark QuadPod is a rugged, lightweight torsionally stable platform for long range EO, laser and radar equipment. The adjustable legs can cope with a ground slope of up to 12°.

Packed into two kit bags for easy stowage and portability the Clark QuadPod is an all-aluminum construction using the same materials as used in our MIL Std 810F qualified masts, aircraft grade 6082T6 seamless drawn aluminum tube and LM6 die cast aluminum. It has a large 250kg head load capacity mounted via a 240mm diameter flange. Torsional stability is +/- 0.1°.

No tools are required for assembly and it is deployed in under 2 minutes. All fixings are retained to avoid loss.

Technical Specifications

- Height 1.07m
- Payload 250 kg
- All aluminum
- Torsional stability is +/- 0.1°
- Non-Rotatable
- 240mm payload flange included
- Field Deployment
- Field legs, bubble level and stakes included
- Two storage bags included
- Dry operating temperatures
 - -40°F to 131°F [-40°C to 55°C]



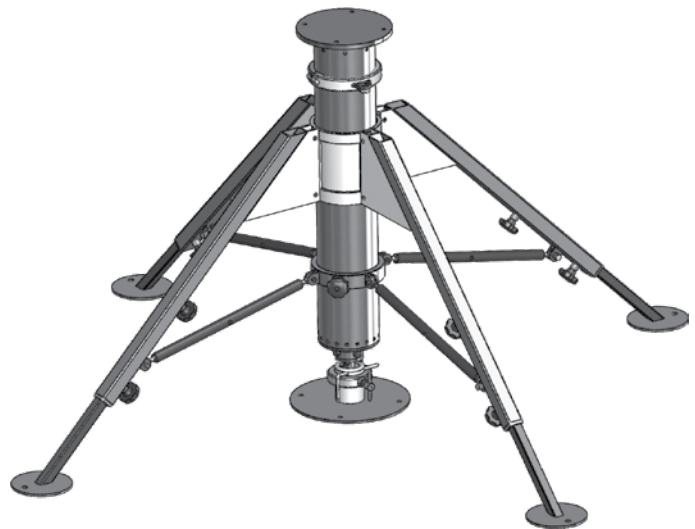
Specifications | Key Features

Clark Series	Base Tube [in.]	Number of Sections	Height [m]		Payload Capacity [kg]
			Stow	Extended	Maximum
QuadPod	6.00	1	1.07	1.07	250.0

- Rugged, but lightweight, all-aluminium construction – Aircraft grade seamless drawn 6082T6, aluminium alloy 6082T6, die cast aluminium alloy LM6
- Fully man portable in 2 bespoke bags:
 - QuadPod Bag [packed] – 1040×340×340 mm, 20 kg approx
 - Leg Assembly Bag [packed] – 1070×310×250 mm, 12 kg approx.
- Large 250 kg headload, via 240 mm heavy duty top flange
- Torsionally stable to $\pm 0.1^\circ$
- Adjustable legs allow for deployment on sloping ground of up to 12°
- Integral bubble level ensures accurate deployment
- Bespoke pre-tensioned bracing arm assembly ensures a totally stable platform every time
- Dyed black and hard anodised finish for long-term all weather protection
- CE marked
- Air transportable
- Deploy <2 minutes



- Adjustable legs allow for deployment on sloping ground of up to 12°
- Integral bubble level ensures accurate deployment
- Bespoke pre-tensioned bracing arm assembly ensures a totally stable platform every time
- Dyed black and hard anodized finish for long-term all-weather protection
- CE marked
- Air transportable





CLARK SERIES QUADPOD WITH WT SERIES PNEUMATIC MAST KIT

Extended Heights up to 9.8 ft. | Payload Capacity up to 264.5 lb

Will-Burt's Clark QuadPod is a highly portable telescopic mast system based on our QuadPod system using a WT Series telescopic mast, extending to 3.0m and with up to a 120kg headload. Fitted as standard with a 190mm diameter flange it can manage a variety of payloads that require the utmost level of stability and pointing accuracy.

Technical Specifications

- Height 3.0 m
- Payload 120 kg
- All aluminum
- Locking collars
- Non-Rotatable
- 190mm payload flange included
- Field Deployment
- Field legs, bubble level and stakes included
- Guy Kit included
- Air pump included
- Storage bags included
- Dry operating temperatures
 - -40°F to 131°F [-40°C to 55°C]



Top Guy Kit

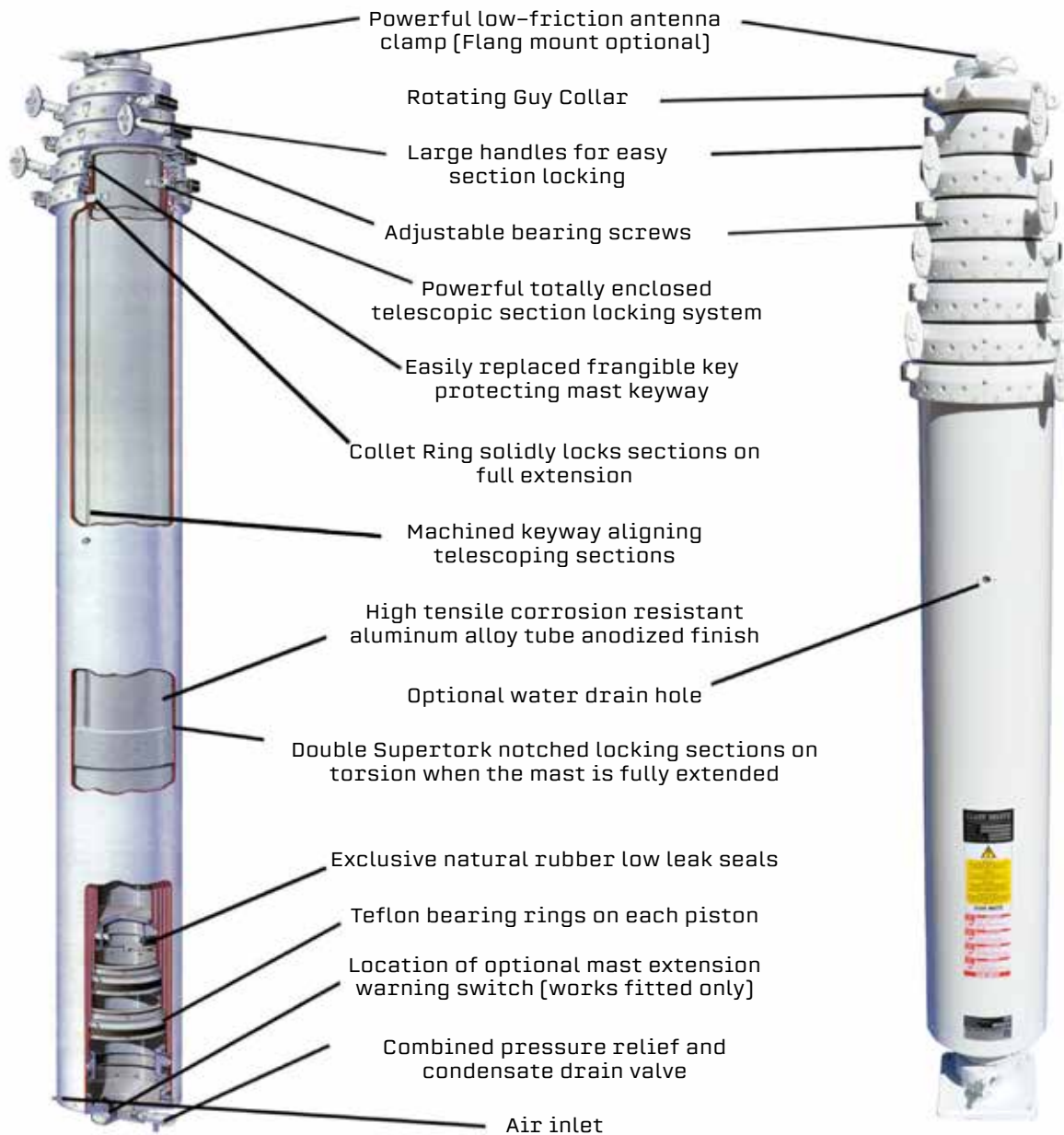


Hand Pump with 3m Hose



Specifications | Key Features

Clark Series	Base Tube [in.]	Number of Sections	Height [m]		Payload Capacity [kg]
			Stow	Extended	Maximum
QuadPod with WT Mast Kit	6.00	5	1.13	3.00	120.0



Available with optional extension warning switch



CLARK SERIES SECTIONAL MASTS

Extended Heights up to 131.2 ft. | Payload Capacity up to 661.3 lb

Will-Burt's Clark Sectional Masts are fully portable mast systems, capable of being transported to wherever there is a requirement, mountain top, jungle or remote desert locations. Packed in a series of carry bags, each designed to be carried by one person (two people for the leg bag), they can be air lifted in or driven in an off-road vehicle.

Designed to be operated in many types of ground conditions, slopes up to 24 degrees are possible, sectional masts are manually operated requiring no power source as the mast sections are fed up through a guide box on 3 adjustable legs using a geared hoist. Guying is essential and the mast operates a system of guys keeping the mast guyed and safe at all times during erection and retraction. This system uses a winch controller system which allows one person to control all 3 guys at once.

Clark's Sectional Mast Systems are field-proven over decades and MIL-STD 810 qualified. Clark requires cost-free training at Clark's factory location on the Isle of Wight, England, with the purchase of a sectional mast system (customer responsible for travel).

Technical Specifications

- Heights up to 40m
- Payloads up to 300 kg
- Aircraft grade aluminum mast sections
- Field Deployment
- Includes all gear needed for fast and safe deployment
- Deploy with 2 to 4 persons dependent on height of mast
- Carry bags 1 or 2 man lift
- Dry operating temperatures
 - -40°F to 131°F [-40°C to 55°C]

Packed Kit



Series 90



TYPE 73



TYPE 72



Series 80



Series 90



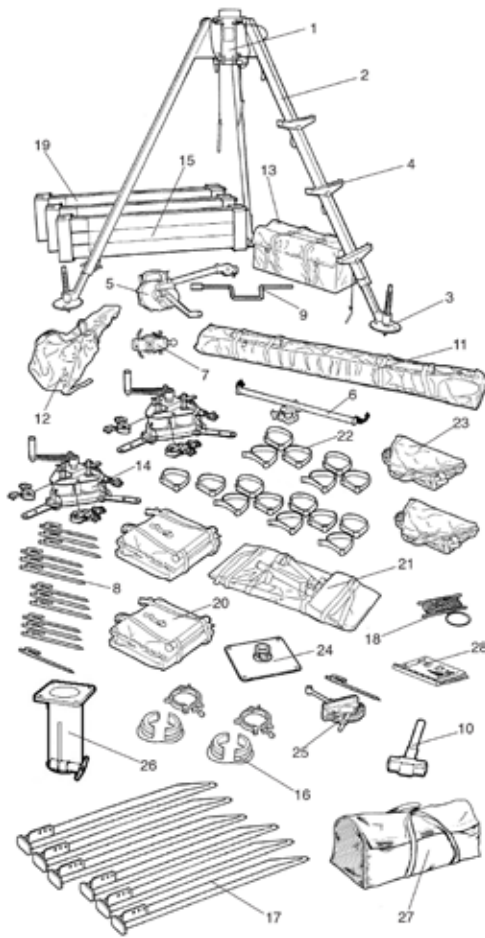
Type 72



Specifications

Standard Type 72 – 15m Mast

The number of mast sections, mast section carriers, pickets, guy collars, spikes and other equipment in the kit varies according to the actual height of the mast to be erected.



Item	Title	Quantity per Kit
1	Mast Guide Box	1
2	Leg Assembly	3
3	Foot Assembly	3
4	Step Assembly	3
5	Hoist	1
6	Hoist Support Bar	1
7	Lifting Block	1
8	Spike	13
9	Foot Adjustment Brace	1
10	1.8 kg Hammer	1
11	Leg Bag	1
12	Hoist Bag	1
13	Equipment Bag	1
14	Guy Winch Kit	2
15	Type 72 Mast Section	16
16	Guy Collar Set	2
17	24" Picket	6
18	Picket Radius Line	1
19	Mast Section Carrier	3
20	Winch BAG	2
21	Accessory Bag	1
22	Feeder Cable Strap	16
23	Guy Winch Cover	2
24	Field Base	1
25	Brake Army Assembly	1
26	Top Flange	1
27	Accessory Bag	1
28	Handbook [not shown]	1

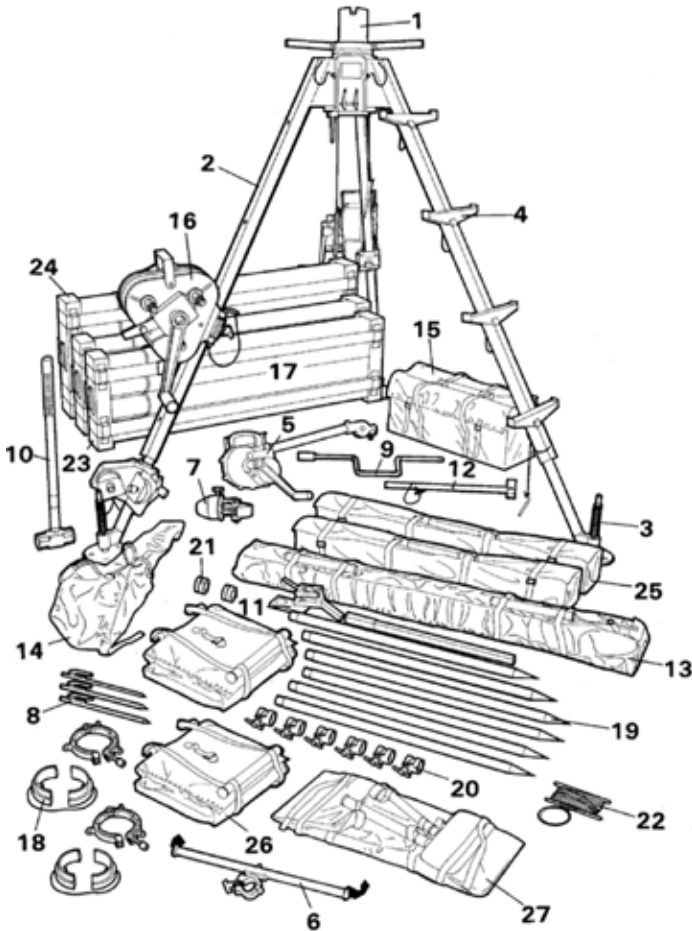
Clark Series Type 72 Sectional Mast System	72-8	72-10	72-12	72-15	72-18	72-20
Base Tube	3.00	3.00	3.00	3.00	3.00	3.00
Number of Sections	9	11	13	16	20	22
Extended Height [m]	8.40	10.20	12.00	14.75	18.40	20.20
Payload Capacity [kg]	55.0	50.0	45.0	40.0	35.0	30.0
System Weight [kg]	148.0	152.0	166.0	191.0	213.0	222.0
Operators Required	2	2	2	3	3	3
Typical Time to Erect [minutes]	15	18	24	32	36	40
Typical Time to Lower and Pack [minutes]	14	16	17	18	19	20

Specifications

Clark Series Type 73 Sectional Mast System	73-10	73-13	73-16	73-18	73-20	73-24	73-30
Base Tube	4.00	4.00	4.00	4.00	4.00	4.00	4.00
Number of Sections	7	8	12	13	15	18	23
Extended Height [m]	10.37	12.81	16.47	17.69	20.13	23.79	29.89
Payload Capacity [kg]	75.0	75.0	70.0	70.0	60.0	55.0	50.0
System Weight [kg]	165.0	175.0	190.0	235.0	245.0	300.0	347.0
Operators Required	2	2	3	3	3	3	4
Typical Time to Erect [minutes]	18	26	34	36	40	60	70
Typical Time to Lower and Pack [minutes]	14	17	18	20	30	40	40

Standard Type 73 – 18m Mast

The number of mast sections, mast section carriers, pickets, guy collars, spikes and other equipment in the kit varies according to the actual height of the mast to be erected.



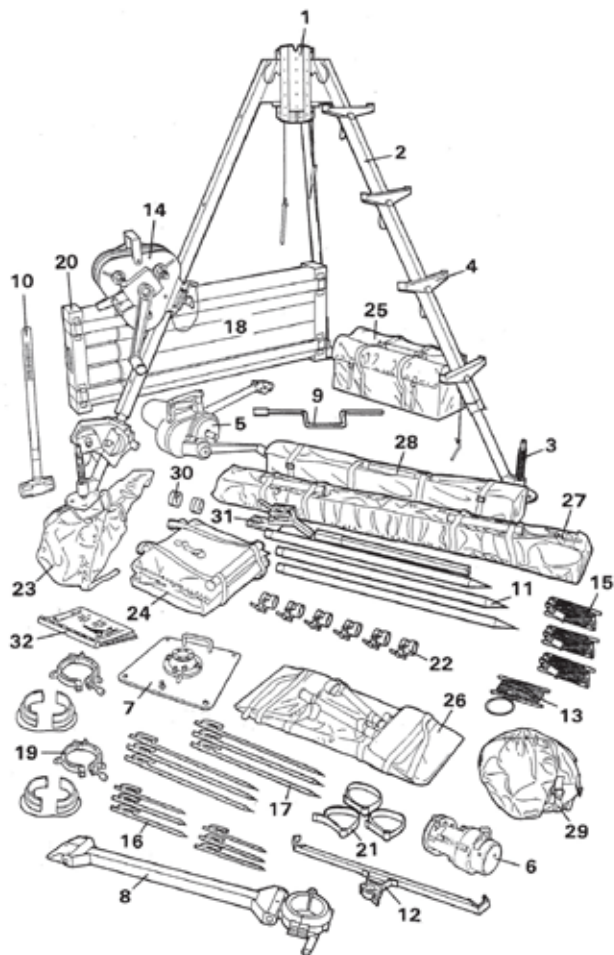
Item	Title	Quantity per Kit
1	Mast Guide Box	1
2	Leg Assembly	3
3	Foot Assembly	3
4	Step Assembly	3
5	Hoist	1
6	Hoist Support Bar	1
7	Lifting Block	1
8	Spike	3
9	Foot Adjustment Brace	1
10	Hammer	1
11	Picket Extractor	1
12	Bubble Level	1
13	Leg Bag	1
14	Hoist Bag	1
15	Equipment Bag	1
16	Guy Winch Kit [Leg Mounted]	2
17	Mast Section	13
18	Guy Collar Set	2
19	Picket	6
20	Picket Clamp	6
21	Picket Driving Cap	2
22	Picket Radius Line	1
23	Mast Section Carrier [4 Section]	2
24	Mast Section Carrier [5 Section]	1
25	Picket Bag	2
26	Winch Bag	2
27	Accessory Bag	1
28	Handbook [not shown]	1

Specifications

Clark Series Series 80 Sectional Mast System	80-6	80-10	80-12	80-16	80-18	80-20	80-25	80-30
Base Tube	5.00	5.00	5.00	5.00	5.00	5.00	5.00	5.00
Number of Sections	5	8	10	13	15	17	20	25
Extended Height [m]	6.00	10.00	12.00	16.00	18.00	20.00	25.00	30.00
Payload Capacity [kg]	125.0	125.0	125.0	120.0	120.0	120.0	110.0	110.0
System Weight [kg]	213.0	235.0	252.0	309.0	320.0	329.0	397.0	455.0
Operators Required	2	2	2	3	3	3	3	4
Typical Time to Erect [minutes]	22	32	34	40	44	50	70	80
Typical Time to Lower and Pack [minutes]	16	18	20	22	24	35	45	50

Series 80 - 6m Mast

The number of mast sections, mast section carriers, pickets, guy collars, spikes and other equipment in the kit varies according to the actual height of the mast to be erected.



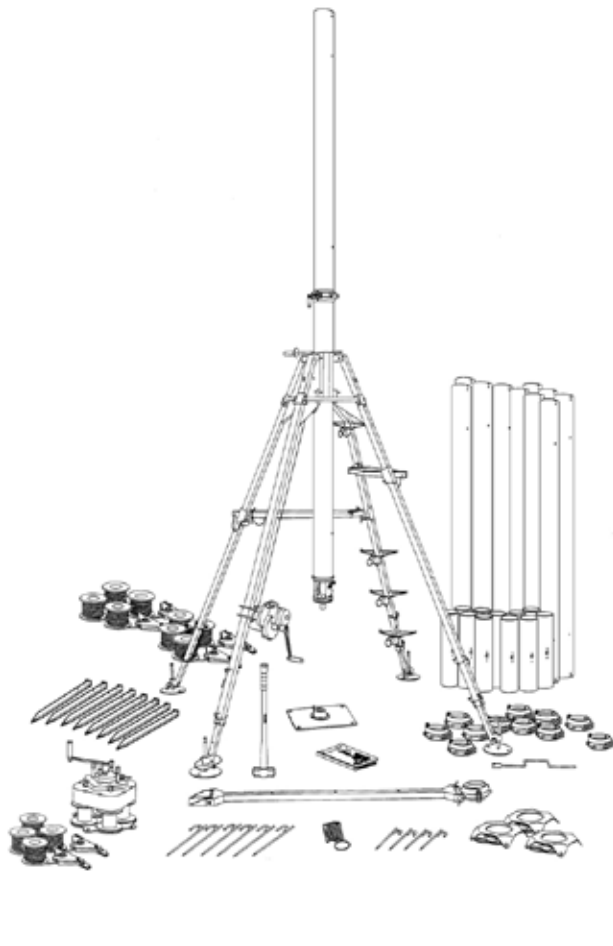
Item	Title	Quantity per Kit
1	Mast Guide Box	1
2	Leg Assembly	3
3	Foot Assembly	3
4	Step Assembly	4
5	Hoist Assembly	1
6	Lifting Block Assembly	1
7	Base Assembly	1
8	Brake Arm	1
9	Foot Adjustment Brace	1
10	3.2 kg Hammer	1
11	1 meter Picket	3
12	Hoist Support Bar	1
13	Picket Radius Line	1
14	Guy Winch Kit [Leg Mounted]	1
15	Kevlar Guy Assembly	3
16	14" Spike	6
17	24" Spike	6
18	Mast Section	5
19	Guy Collar Assembly	2
20	Mast Section Carrier	1
21	Feeder Cable Strap	3
22	Picket Clamp	3
23	Hoist Bag	1
24	Winch Bag	1
25	Equipment Bag	1
26	Accessory Bag	1
27	Leg Bag	1
28	Picket Bag	1
29	Winch Protection Cover	1
30	Picket Driving Cap	2
31	Picket Extractor	1
32	User's Handbook	1

Specifications

Clark Series Series 90 Sectional Mast System	90-10	90-16	90-20	90-24	90-30	90-40	80-30
Base Tube	6.00	6.00	6.00	6.00	6.00	6.00	6.00
Number of Sections	5	8	10	12	15	20	25
Extended Height [m]	10.00	16.00	20.00	24.00	30.00	40.00	50.00
Payload Capacity [kg]	300.0	280.0	250.0	230.0	200.0	100.0	50.0
Guy Levels [4-way]	1	2	2	3	3	4	5
Operators Required	2	2	3	3	3	3	4
Typical Time to Erect [minutes]	32	34	40	44	50	70	80
Typical Time to Lower and Pack [minutes]	18	20	22	24	35	45	50

Series 90 - 10m Mast

The number of mast sections, mast section carriers, pickets, guy collars, spikes and other equipment in the kit varies according to the actual height of the mast to be erected.



Sectional Masts System Components [varies by model]



The guy winch unit allows control of three guys by one person simultaneously or individually. **[4-way guy winch for Series 90 shown above]**



Mast hoist for raising the mast sections, geared for ease of operation and only reversed by push button brake with automatic centrifugal descent control brake.



Angled steel picket complete with shackles for attaching the snaphook of the guy pulley from the switch.



Large foot assembly for levelling the mast on sloping ground. The foot has holes for ground spikes.



Guy winch unit [shown leg mounted but can also be ground mounted]. This allows control of three guys by one person simultaneously or individually.



Tubular picket with guy pulley attached. Tubular pickets can be driven into the ground and the guy wire is attached at the best height regardless of ground conditions.



The brake arm assembly secures the mast assembly in the desired direction.

Sectional Masts Optional Accessories [Contact factory for compatibility]

**Light Antenna Tilter**

A mast head fitting operated from the ground by a special ball rope to tilt antennas up or down 20°. Suitable for antennas up to 10 kg.

**Light Antenna Rotator**

Fits on the mast top and is operated from ground by ball rope. 360° rotation. Essential if a mast carries two antennas which need to be pointed independently. Suitable for antennas up to 10 kg.

**Winch Protection Cover**

When fitted protects the guy winch unit from rain, snow and ice.

**Flanged Antenna Spigot**

Adapts the mast top flange fitting to give a spigot for antenna attachment.

**Antenna Rotator**

Fits on the mast top and is operated from ground by ball rope. 360° rotation. Essential if a mast carries two antennas which need to be pointed independently.

**Mast Top Flange Fitting**

Fits over the top section of the mast giving a mounting flange 152mm².

**Antenna Tilt Unit**

A mast head fitting operated from the ground by a special ball rope to tilt antennas up or down 20°.

**Lightning Protection Kit**

A range of solutions are available to suit customer requirements.

**Side Mounting Adapter**

A general purpose attachment. The Adapter clamps directly round the mast section. Standard antenna spigot 40 mm diameter.

**Feeder Cable Strap**

A simple and effective way of securing feeder cables to the mast.

CONTACT YOUR SALES REPRESENTATIVE TODAY



Contact Us
Complete a Contact Form

WILL-BURT NORTH AMERICA **WORLD HEADQUARTERS**

401 Collins Boulevard, Orrville, OH 44667 USA
Telephone: +1 330 682 7015
Mast Customer Service: +1 330 684 4000
Fax: +1 330 684 1190
Email: info@willburt.com

WILL-BURT **UNITED KINGDOM**

Unit 5b, Station Approach, Four Marks,
Alton Hampshire, GU34 5HN, United Kingdom
Telephone: +44 [0] 1403 265532
Fax: +44 [0] 1403 259072
Email: info@willburt.com

WILL-BURT INTEGRATION **ALUMA TOWER | ITS**

7750 9th Street SW
Vero Beach, FL 32968 USA
Telephone: +1 772 567 3423 | +1 800 850 8535
Fax: +1 772 567 3432
Aluma Tower Email: info@alumatawer.com
ITS Email: programs@itstowers.com

WILL-BURT ASIA **SINGAPORE SALES OFFICE**

1 Fullerton Road, #02-01
One Fullerton, Singapore 049213
Telephone: +65 6832 5689
Fax: +65 6722 0664
Email: info@willburt.com

WILL-BURT **GERMANY**

Fischergasse 25
D-91344 Waischenfeld, Germany
Telephone: +49 9202 180
Fax: +49 9202 1811
Email: info@willburt.com

CLARK MASTS **A WILL-BURT COMPANY**

18-20 Ringwood Road, Binstead,
Isle of Wight, PO33 3PA, England
Telephone: +44 [0] 1983 563691/567090
Fax: +44 [0] 1983 566643/811157
E-mail: sales@clarkmasts.com

The Will-Burt Company, headquartered in Orrville, Ohio, USA, is the world's premier manufacturer of mobile telescoping masts, towers and pan and tilt positioners. We offer virtually every mobile payload elevation and integration solution for defense, government, first responders, cellular and mobile, broadcast, energy production and other markets. Will-Burt also offers contract manufacturing, metal fabrication, powder-coating, and rapid prototyping services. Will-Burt is an international company with offices and manufacturing in the USA, England, and Germany along with offices in Singapore. All Will-Burt Company manufacturing locations are backed by a certified ISO 9001:2015 Quality Management System. Incorporated in 1918, Will-Burt is 100% employee-owned and is classified as a small business.



Disclaimer: Dimensions and weights are for reference only and are subject to change.
Please contact Will-Burt for current engineering specifications.

© April, 2025
The Will-Burt Company
ISO 9001:2015
INNOVATION ELEVATED®