



Visit
Corporate
Website



Watch
Product
Video



Watch
Corporate
Video

Will-Burt United Kingdom designs, manufactures, and assembles pan and tilt positioners and camera housings. Pan and tilt positioners are available for mobile – PositionIt – and fixed applications – AccuPoint – along with multiple sizes in each range creating flexibility and options for our customers. An IP68 rating delivers dust and water protection for our maintenance-free positioners guaranteeing a long life in all weather conditions. Will-Burt PositionIt and AccuPoint positioners have a high gear ratio providing lower speeds for smooth operation with sensors and antennas. Universal mounting plates are included that are suitable for the most common payloads. Simple to install, easy to use, and lightweight construction make Will-Burt positioners a great solution across a wide range of industries.



Our all-weather environmental camera housings are made with a proven, traditional design keeping them compact yet spacious to accommodate larger camera and lens combinations. Toughened glass and stainless-steel fittings/ fastenings ensure long operational life. Two entry glands and a grommeted hole are provided for efficient cable management to secure the units' IP66 integrity.

Because of our set up, customers' specific needs can be addressed faster and more effectively than ever. We also offer a full pre-build service for customers who require a turnkey solution for their requirements. If you need additional control equipment or CCTV accessories, we will help find the best solutions for you.



TABLE OF CONTENTS



4-5

**POSITIONIT
CONTINUOUS ROTATION
PAN AND TILT POSITIONERS**
[MOBILE APPLICATIONS]

6-7

**POSITIONIT
PAN AND TILT POSITIONERS**
[MOBILE APPLICATIONS]

8

**POSITIONER
CONTROLLERS**



10-11

**ACCUPOINT
CONTINUOUS
ROTATION PAN AND
TILT POSITIONERS**
[STATIC APPLICATIONS]

12-13

**ACCUPOINT PAN AND
TILT POSITIONERS**
[STATIC APPLICATIONS]

14-17

**ENVIRONMENTAL
CAMERA HOUSINGS**

18-19

**VALUE ADDED
ACCESSORIES**



PI-35 CR



PI-75 CR



PI-150 CR

POSITIONIT CONTINUOUS ROTATION PAN AND TILT POSITIONERS

for Mobile Applications

The PositionIt range of pan and tilt positioners are now available with **Continuous Rotation** panning operation. All PositionIt models include improved, next-generation control electronics and software while retaining the rugged reliability of the original PositionIt range. The updated PositionIt series is fully backwards compatible regarding connection points, electronics, and software with the previous generation. Improved motor control is assured with higher resolution speed control, slower minimum speeds, and user adjustable minimum speeds and speed ramps. The GUI for configuring and commissioning allows users to set and adjust many features that were originally factory set only. It also boasts many features such as the ability to receive positional feedback, set home position and limit stops and fault diagnostics.

- Designed, manufactured, and tested to excel in mobile applications
 - Hardened metal gears
 - MIL-STD 810 certified by independent laboratory
- Strong, lightweight construction
 - Die-cast aluminum housing
 - Stainless steel fasteners
- Regenerative Braking
 - On motor shaft
- New Graphical User Interface [GUI]
 - Greater level of control with user set features
 - Faster set-up
 - Positional feedback
- More precise than ever
 - Higher level of motor control
 - Greater positional accuracy
- Flexible Connection
 - Bottom or side
- Universal mounting plate
 - Suitable for most common payloads
- Pelco-D over RS-485 Communications
- Weather-proof
 - IP 68 Rated
- Long Operational Life
- Backwards compatible
- 2 Year warranty



PositionIt Continuous Rotation	PI-35 CR	PI-75 CR	PI-150 CR
Payload Capacity* [ft lb / Nm]	35 / 47.45	75 / 101.68	150 / 203.37
Overall Height [in. / mm]	13.4 / 341	15.1 / 383.1	15.2 / 385.1
Overall Width [in. / mm]	10.7 / 273	11.3 / 287.02	14.6 / 370.84
Overall Depth [in. / mm]	6.1 / 154.9	7.19 / 182.67	7.19 / 182.67
Weight [lb. / kg]	25.57 / 11.6	41.45 / 18.8	46.52 / 21.1
Operating Temperature [°F / °C]	-40 to 140 / -40 to 60	-40 to 140 / -40 to 60	-40 to 140 / -40 to 60
Pan Degrees of Rotation [Continuous]	0° to 360°	0° to 360°	0° to 360°
Tilt Degrees of Rotation	+90° / -90°	+90° / -90°	+90° / -90°
Pan Speed [Proportional] [per second]	12°	6.5°	6.5°
Tilt Speed [Proportional] [per second]	12°	5.5°	5.5°
Backlash	≤ 0.15°	≤ 0.15°	≤ 0.15°
Repeatability	≤ 0.3°	≤ 0.3°	≤ 0.3°
Maximum Continuous Power	44 W	44 W	44 W
Maximum Continuous Current	1.85 amps	1.85 amps	1.85 amps
Input Voltage	24 VDC	24 VDC	24 VDC
Protocol	Pelco D used [Pelco P available]		
Ingress Protection Rating	IP68	IP68	IP68
Baud Rate	2,400 bps [Other Baud Rates Available]		

*Capacity measured at 12 inches or less from the tilt axis. | Dimensions and weights are for reference only and are subject to change. Contact Will-Burt for current engineering specifications.

Pin-Out & Flying Lead Assignment

Pin No.	Wire Identification / Color	Assignment	Maximum Current
A	N/A	N/A	N/A
B	Red	+ ve	3 A
C	Black	- ve	3 A
D	Green	Ground	1 A [24 AWG]
E	White/Brown	AUX Data	1 A [24 AWG]
F	Brown	AUX Data	1 A [24 AWG]
G	White/Yellow	Data B	N/A
H	Yellow	Data A	N/A
J	White/Blue	AUX Data	1 A [24 AWG]
K	N/A	N/A	N/A
L	COAX [RG179]	COAX [RG179-75 Ohm]	N/A
M	Blue	AUX Data	1 A [24 AWG]

Cable Assembly Specification

Connector Type	Circular Connector, 12 Way
Cable Type	10 Core Composite Cable
Voltage Rating	24v
Max Current Rating	3A
Temperature Range [°F / °C]	-40 to +80
Ingress Protection	IP68 Connector

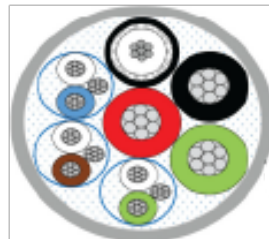
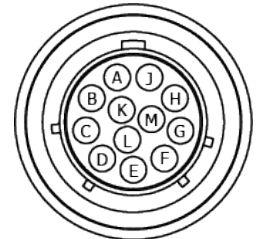


Image to show twisted pair data cables for clarity with pin-out table



Connector Face

POSITIONIT[®]



PI-12



PI-35



PI-75



PI-150

POSITIONIT PAN AND TILT POSITIONERS

for Mobile Applications





PositionIt	PI-12	PI-35	PI-75	PI-150
Payload Capacity* [ft lb / Nm]	12 / 6	35 / 47	75 / 101	150 / 202
Overall Height [in. / mm]	8.9 / 225	9.7 / 246	11.32 / 287.7	11.32 / 287.7
Overall Width [in. / mm]	9.9 / 252	10.8 / 273	9.21 / 234	12.4 / 314
Overall Depth [in. / mm]	3.9 / 100	5.7 / 144	6.8 / 171	6.8 / 171
Weight [lb. / kg]	10 / 5	20 / 9	35 / 16	37 / 17
Operating Temperature [°F / °C]	-40 to 140 / -40 to 60	-40 to 140 / -40 to 60	-40 to 140 / -40 to 60	-40 to 140 / -40 to 60
IP Rating	IP68 - Waterproof	IP68 - Waterproof	IP68 - Waterproof	IP68 - Waterproof
Pan Axis	400° [± 200°]	400° [± 200°]	400° [± 200°]	400° [± 200°]
Pan Speed (proportional) [per second]	1 to 6°	1° to 12°	0.02° to 6.5°	0.02° to 6.5°
Tilt Axis	180° [± 90°]	180° [± 90°]	180° [± 90°]	180° [± 90°]
Tilt Speed (proportional) [per second]	1 to 6°	1° to 12°	0.02 to 5.5°	0.02 to 5.5°
Backlash	≤ 0.15°	≤ 0.15°	≤ 0.15°	≤ 0.15°
Repeatability	≤ 0.3°	≤ 0.3°	≤ 0.3°	≤ 0.3°
Maximum Continuous Power	44 W	44 W	44 W	44 W
Maximum Running Current	1.85 amps	1.85 amps	1.85 amps	1.85 amps
Input Voltage	24 VDC - Converters available for 12 VDC and AC power sources			

*Capacity measured at 12 inches or less from the tilt axis. | Dimensions and weights are for reference only and are subject to change. Contact Will-Burt for current engineering specifications.

HANDHELD CONTROLLER

The Pelco-D compatible handheld controller with LED screen has all of the features necessary to optimize the performance of the PositionIt positioner. The precision 4D joystick controller flawlessly controls the pan and tilt functions. Includes LED screen, keyboard and programmable presets that simplify operation. The positioner handheld controller can also be optionally used in conjunction with the pan and tilt positioner controller.



Input Voltage	12V DC
Communication Interface	RS485
Operating Temperature [°F / °C]	15 - 131 / 0 - 55
Dimensions [L x W x H] [in. / mm]	6.2 x 5.9 x 4.2 / 458 x 150 x 107

POSITIONIT CONTROLLERS

Handheld Controller | Rack Mount Controller

RACK MOUNT CONTROLLER

The 19-inch (2U) Rack Mount Positioner Controller from Will-Burt is loaded with new features. You will always know the status of the positioner with real-time positional, speed, and status feedback. Control multiple positioners and third-party equipment with a single controller. This controller is optimized for positioners with stow and deploy buttons located on the front panel.



The latest Positioner Controller from Will-Burt will simplify deployment and operation of communications and video equipment.

- LCD Home Screen displays real-time positioner information
- LCD Selector Menu provides additional control functionality
- Control third-party equipment through (7) digital discrete outputs with USB and RS-485 inputs
- Control multiple positioners in single system through address selection
- Positioner control with front panel directional push buttons and configurable 'Stow' & 'Unstow' presets
- Pelco-D over RS-485 half-duplex output to positioner
- 100-240VAC input voltage with 24VDC output voltage to positioner

Input Voltage	100-240VAC
Output Voltage	24VDC
Communication Interface	Pelco-D over RS-485 half-duplex at 2400 bps
Operating Temperature [°F / °C]	32 to 122 / 0 to 50
Dimensions [in. / cm]	19 x 3.5 x 11.7 / 48.26 x 8.81 x 29
Weight [lb. / kg]	6.6 / 3







AP CR-8



AP CR-30



AP CR-50

ACCUPOINT CONTINUOUS ROTATION POSITIONERS

for Static Applications

The AccuPoint Continuous Rotation range of positioners for static mount applications, maintaining everything that was great about the AccuPoint range but now with Continuous Rotation capability. The AccuPoint Continuous Rotation Range utilizes a high-quality slip ring with RG179 75 Ohm COAX compatibility. The AccuPoint Continuous Rotation positioners provide high positional accuracy and are easier to use than ever. With a greater level of motor control, your surveillance capability will be at its highest and antenna accuracy will be precise. Supplied with a simple graphic interface (GUI), it is now easier to configure allowing faster installation times and more capabilities to fulfill your specifications. Know the exact pointing location of your device with positional feedback and adjust it easily to the direction needed.

Improved motor control is assured with higher resolution speed control, slower minimum speeds, and user adjustable minimum speeds and speed ramps. The new GUI for configuring and commissioning allows users to set home positions, receive position feedback, and adjust many other features that were originally factory set standards. Rugged and robust as ever before, AccuPoint can withstand the harshest weather conditions.

Available in three sizes, all units can be configured for over-the-top or side mount operation.

- Continuous Rotation pan operation.
- High Quality slipring with 3G-SDI video transmission capability.
- Backwards compatible
- Greater level of control with user set features
- Faster setup
- Higher level of motor control and greater positional accuracy
- Positional feedback
- Rugged and robust
- Pelco D over RS485 Communications
- IP68 Rated
- 3-year warranty

Model	AP CR-8	AP CR-30	AP CR-50
Mounting Option	Over The Top	Over The Top	Over the Top
Height [Standard] [in. / mm]	15.0 / 381.6	13.4 / 341.2	11.2 / 283.5
Platform Width [in. / mm]	9.2 / 234	7.8 / 197	5.8 / 147
Total Width [in. / mm]	9.6 / 243.6	8.2 / 207.5	6.2 / 158
Depth [without plugs] [in. / mm]	7.1 / 179	5.9 / 151	5 / 129
Weight [lb. / kg]	38.6 / 17.5	21.9 / 9.9	7.5 / 3.4
Voltages	24 VDC – Converters available for 12 VDC and AC power sources		
Pan Gear Box Speed [Max] [per second]	30°	48°	24°
Tilt Gear Box Speed [Max] [per second]	10°	12°	6°
Capacity [ft-lb]	50	30	8
Pan Range	Continuous	Continuous	Continuous
Tilt Range	+90° / -45°	+90° / -45°	+90° / -45°
Backlash	≤ 0.15°	≤ 0.15°	≤ 0.15°
Repeatability	≤ 0.3°	≤ 0.3°	≤ 0.3°
Ingress Protection	IP68	IP68	IP68
Temperature Range [°F / °C]	-40 to 140 / -40 to +60	-40 to 140 / -40 to +60	-40 to 140 / -40 to +60
Maximum Continuous Power	44 W	44 W	44 W
Max Current Draw	1.85 amps	1.85 amps	1.85 amps
Protocol	RS485 / Pelco D	RS485 / Pelco D	RS485 / Pelco D
Absolute Positioning	Yes	Yes	Yes
Positional Feedback	Yes	Yes	Yes
Application	Static Mount	Static Mount	Static Mount
Housing Color	Grey	Grey	Grey
Addresses	User Set via GUI	User Set via GUI	User Set via GUI

Pin-Out & Flying Lead Assignment

Pin No.	Wire Identification / Color	Assignment	Maximum Current
A	N/A	N/A	N/A
B	Red	+ ve	3 A
C	Black	- ve	3 A
D	Green	Ground	1 A [24 AWG]
E	White/Brown	AUX Data	1 A [24 AWG]
F	Brown	AUX Data	1 A [24 AWG]
G	White/Yellow	Data B	N/A
H	Yellow	Data A	N/A
J	White/Blue	AUX Data	1 A [24 AWG]
K	N/A	N/A	N/A
L	COAX [RG179]	COAX [RG179-75 Ohm]	N/A
M	Blue	AUX Data	1 A [24 AWG]

Cable Assembly Specification

Connector Type	Circular Connector, 12 Way
Cable Type	10 Core Composite Cable
Voltage Rating	24v
Max Current Rating	3A
Temperature Range [°F / °C]	-40 to +80
Ingress Protection	IP68 Connector

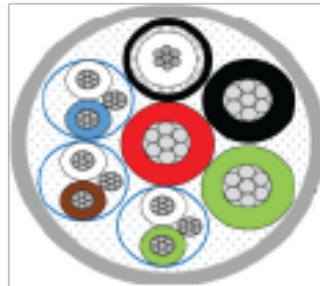
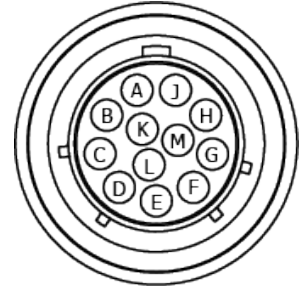


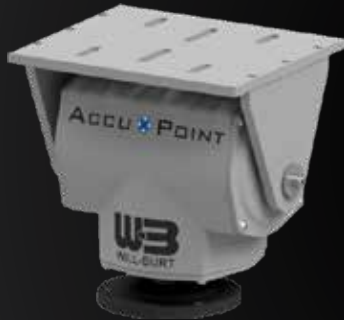
Image to show twisted pair data cables for clarity with pin-out table



Connector Face

AccuPoint®

OVER THE TOP MOUNT



AP-8



AP-30



AP-50

ACCUPOINT OVER-THE-TOP & SIDE MOUNT POSITIONERS for Static Applications

The AccuPoint range of positioners, retaining everything that was great about the original static mounted range but now includes our improved next generation control electronics.

The AccuPoint series is dimensionally and electrically identical to the first generation of Will-Burt positioners with backwards compatible software. Improved motor control is assured with higher resolution speed control, slower minimum speeds, and user adjustable min speeds and speed amps. The new GUI for configuring and commissioning allows users to set home positions, receive position feedback, and adjust many other features that were originally factory set standards. Rugged and robust as ever before, AccuPoint can withstand the harshest weather conditions.

- Backwards compatible
- Greater level of control with user set features
- Higher level of motor control and greater positional accuracy
- Faster setup
- Positional feedback
- Rugged and robust
- Pelco D over RS485 Communications
- IP68 Rated
- 3 year warranty



AccuPOINT®

SIDE MOUNT


AP-8

AP-30

AP-50

Model	AP-8		AP-30		AP-50	
	Side Mount	Over the Top	Side Mount	Over the Top	Side Mount	Over the Top
Height [Standard] [in. / mm]	5.2 / 131	5.8 / 146.2	7.4 / 187	8 / 204	9.3 / 235.1	9.8 / 248.1
Platform Width [in. / mm]	6.4 / 162.1	5.8 / 147	7 / 178.7	7.8 / 197	7 / 177.2	9.2 / 234
Total Width [in. / mm]	12.2 / 309.5	6.2 / 158.1	14.6 / 369.8	8.2 / 207.5	15.8 / 400.9	9.6 / 243.6
Depth [without plugs] [in. / mm]	5.2 / 132	5 / 127	6 / 152.8	5.9 / 149.64	7 / 177	7 / 177
Weight [lb. / kg]	< 5.5 / 2.5	< 5.07 / 2.3	< 14.55 / 6.6	< 14.7 / 6.7	< 27.4 / 12.45	< 29.7 / 13.5
Voltages	24 VDC – Converters available for 12 VDC and AC power sources					
Pan Gear Box Speed [Max]	24°/sec		48°/sec		30°/sec	
Tilt Gear Box Speed [Max]	6°/sec		12°/sec		10°/sec	
Capacity [ft-lb]	8		30		50	
Pan Range	±180°		±180°		±180°	
Tilt Range	±90°	+90° / -45°	±90°	+90° / -45°	±90°	+90° / -45°
Backlash	0.15°		0.15°		0.15°	
Repeatability	< 0.3°		0.3°		< 0.3°	
Ingress Protection	IP68		IP68		IP68	
Temperature Range [°F / °C]	-4 to 122 / -20 +50		-4 to 122 / -20 +50		-4 to 122 / -20 +50	
Max Current Draw	0.85 A		1.85 A		1.85 A	
Protocol	RS485 / Pelco D		RS485 / Pelco D		RS485 / Pelco D	
Absolute Positioning	Yes		Yes		Yes	
Positional Feedback	Yes		Yes		Yes	
Application	Static Mount		Static Mount		Static Mount	
Housing Color	Grey		Grey		Grey	
Addresses	User Set via GUI		User Set via GUI		User Set via GUI	



SMALL 901



MEDIUM 900



LARGE 902



WIDE 903 STANDARD



WIDE 903 SHORT



**WIDE 903 WITH
FAN COOLED SUNSHIELD**

MAINTENANCE FREE ALL-WEATHER ENVIRONMENTAL CAMERA HOUSINGS

Aluminum and 316 Stainless Steel Enclosures

Made to a proven, traditional design, the Mitre range of environmental camera housings are extremely compact yet spacious enough [particularly the new 903] to accommodate larger camera/lens combinations.

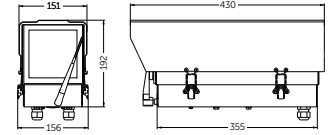
Broadening the range of applications to include corrosive and clean environments, Small [901] and Medium [900] aluminium cased housings cases are now available in 316 stainless steel [801 and 800].

Toughened glass and stainless steel fittings/ fastenings ensure long operational life and two entry glands and a grommetted hole are provided for efficient cable management to secure the units' IP66 integrity.

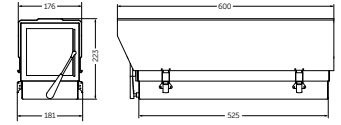
A deep base allows the fitting of an optional integral wiper which incorporates a micro switch for self-parking. Standard accessories include an extended camera plate, steel safety strap and wiring distribution block. A PTC resistor heater with progressive performance is also provided which eliminates the need for a thermostat and when the heat's on, optional double skinned sunshields are available for all models. The roomy new 903 [standard length] can even be supplied with a fan cooled sunshield which draws air through the housing to prevent overheating in extreme conditions.



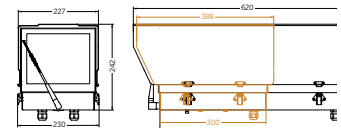
- Uncompromising construction
 - Lightweight sheet aluminium or 316 stainless steel casing and tray
- New 903 series
 - Extra height and width as standard plus short and integral cooling fan versions
- Deep bottom tray
 - Suitable for housing integral wiper or accessories such as receivers or RF TX's & Rx's
- Built to last
 - Stainless steel fastenings
- Weatherproof
 - Sealed to IP rating 66
- Accessories
 - Extended paxolin camera plate and stainless steel safety strap
- PTC Resistor heater
 - Progressive performance without the need of a thermostat [available on request]
- Cable management
 - Two entry glands at 20mm and one hole at 25mm for Kopex or Adaptaflex
- Integral wiper option
 - Micro switch self parking wiper with blade toggle action



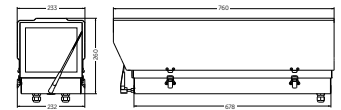
MITRE 901 / 801



MITRE 900 / 800



MITRE 902



MITRE 903 / 903 SHORT

Model	901	900	903 Standard	903 Short	902
Height [in. / mm]	7.6 / 192	9.1 / 230	9.5 / 242	9.5 / 242	10.2 / 259
Width over clips [in. / mm]	6.2 / 156	7.1 / 180	9.1 / 230	9.1 / 230	9.1 / 232
Width over sunshield [in. / mm]	6.0 / 151	6.9 / 174	8.9 / 227	8.9 / 227	9.2 / 233
Length over sunshield [in. / mm]	17.0 / 430	23.6 / 600	24.4 / 620	15.3 / 388	30.0 / 760
Depth inside base [in. / mm]	2.2 / 55	2.2 / 55	2.3 / 57	2.3 / 57	2.2 / 55
Weight [Aluminium without wiper] [lb. / kg]	< 5.5 / 2.5	< 7.7 / 3.5	15.4 / 7	8.8 / 4	< 13.2 / 6.0
Weight [Aluminium with wiper] [lb. / kg]	< 6.6 / 3.0	< 8.8 / 4.0	16.5 / 7.5	9.9 / 4.5	< 14.3 / 6.5
Weight [316 stainless without wiper] [lb. / kg]	10.4 / 4.7	18.1 / 8.2	N/A	N/A	N/A
Weight [316 stainless with wiper]	TBA	TBA	N/A	N/A	N/A

Fixing centres

Base	4 holes tapped M6 on 101.6 PCD [4"] square to base
Platform	4 slots 7.0 wide x 25 long in 225 long Paxolin or aluminium [903 units] plate [1 x ¼" UNC hex screw supplied]
Voltage	24VDC nominal
Capacity [l x w x h] [in. / mm]	13.0 x 4.5 x 4.3 / 330 x 114 x 110 20.1 x 5.5 x 5.7 / 510 x 140 x 145 19.9 x 7.0 x 6.6 / 505 x 178 x 167 10.8 x 7.0 x 6.6 / 273 x 178 x 167 25.6 x 7.1 x 6.7 / 650 x 180 x 170
Options [all models]	Integral self parking wiper, internal fan, washer, thermostat, double skinned sunshield
Heater	Progressive up to 32W
Wiring and connections [in. / mm]	Single row [double row with fan option], 12 way terminal block[s], .08 x .79 / 2 x 20 cable glands plus blanked, .98 / 25 hole for Kopex or Adaptaflex
Recommended cable	16/0.2 [rated at 230V for mains versions]
House color [900 series]	Grey
Temperature Range [°F / °C]	-4 to 122 / -20 to +50

PAN AND TILT POSITIONERS AND CAMERA ENCLOSURES

The Slowspeed system is a complete high resolution solution for users requiring a far higher degree of accuracy than is possible with a normal pan & tilt head and receiver. Delivering the capability of video tracking over long distances (dependent on lens), applications for the Slowspeed include airports and border control, harbours, vehicle embedded systems and other sensitive area surveillance.

Quick and easy to install, the receiver and housing are connected together by just nine connections (five power, two data and two video cables) and the receiver can be controlled over a daisy chained or star wired RS422/485 network. System commissioning and diagnostics are performed via a local or remotely located display.



- Long range surveillance
 - 55-60x lenses
- Ultra slow speed operation
 - Pan and tilt speeds <0.1°/sec minimum to 10°/sec maximum
- Choice of supply voltage
 - Supply voltage either 110V AC or 230V AC
- Choice of auxiliary output voltage
 - Output voltage either supply voltage or 24V AC
- Easy to install
 - 9 wire connections between receiver and housing
- Exceptional accuracy
 - Revolutionary preset technology with 12 bit resolution
- Easy to set up
 - Receiver mountable at base of pole
- Wide choice of lenses
 - Compatible with lenses with iris override and x2 converters up to 60x
- Flexible
 - Supports 14 different protocols
- Active motor drive system
 - Ensures head stays on preset positions

SLOWSPEED ENVIRONMENTAL CAMERA HOUSING

A long distance stunner for sensitive area surveillance

Power supply	230VAC or 110VAC	230VAC or 110VAC	230VAC or 110VAC
Max load	5A @ 230V [1150W]	5A @ 230V [1150W]	5A @ 230V [1150W]
Receiver current draw	Maximum of 100VA max	Maximum of 100VA max	Maximum of 100VA max
Fuses	Auxiliary fuse F2 5A T [20mm ceramic cartridge]		Total max. pan/tilt/lens/24Vac auxiliary 100VA
Outputs	Auxiliary outputs for wash/wipe/lights [1000W max]		Driven at supply voltage or 24V AC selectable by SW2
Video input	1V to 4V p-p 75Ω impedance via BNC socket		Video launch amplifier gain locally and remotely adjustable
Video output	Zoom and focus: adjustable between 6 - 12VDC	Inching speed: adjustable between 0 - 12VDC	1 second inching built in
Lens drives [remotely adjustable]	Iris output: direct drive for 3 motor lens or auto iris override voltage. In auto-iris mode output returns to preset level 15 seconds after manual iris control. Preset level is adjustable. Outputs have red/green LEDs to indicate direction and voltage		
Presets	Inputs for pan, tilt, zoom & focus preset feedback pots		
	Lens 10 bit resolution: Up to 32 full scene presets: pan/tilt/zoom/focus		Head 12 bit resolution: [16 with BBV & Baxall up the coax protocols]
Alarm facilities	8 alarm inputs from volt free normally closed contacts. Output 1 normally closed volt free contact can be set to operate immediately or when the preset is approached after an alarm input. NOTE: The output is used for iris override when using Fujinon or Pentax lens mode		
Additional facilities	Software random pan/sequential preset patrol with individual programmable preset dwell/Datum - return to preset 1, start preset patrol or random pan after menu set duration of inactivity		
Features	LED readout for continual system status		Programming menu with in-built LCD display and screen display
	12V DC/500mA un-switched output		Color coded outlets - live, neutral, earth, low voltage

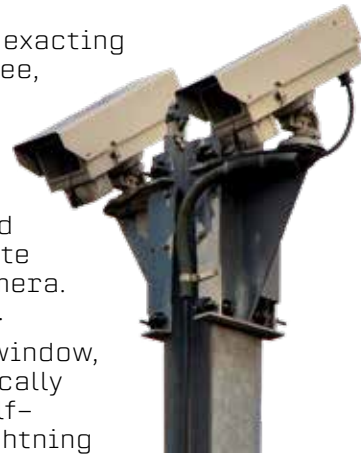


Will-Burt's new Environmental Camera Housing meets the exacting specification of the UK Network Rail. The maintenance-free, all-weather camera housing is designed for general CCTV applications and is approved and certified to meet the Network Rail specification BR1682 issue C and carries the certificate number: PA05/07061.

The housing is constructed of powder-coated aluminum and is secured with external stainless-steel fittings that create a weather-proof and corrosion resistant shelter for a camera. The housing provides an impressive ingress rating of IP66.

The toughened glass window, integral thermostatically controlled heater, self-parking wiper and lightning protection circuit protects the camera and optimizes its performance. The wiring loom and internal camera mounting plate delivers maximum versatility for a variety of cameras.

This Environmental Camera Housing is designed to meet the exacting demands of the UK Network Rail and your own demanding requirements.



UK NETWORK RAIL APPROVED ENVIRONMENTAL CAMERA HOUSING



- Uncompromising construction
 - Lightweight sheet aluminium or 316 stainless steel casing and tray
- New 903 series
 - Extra height and width as standard plus short and integral cooling fan versions
- Deep bottom tray
 - Suitable for housing integral wiper or accessories such as receivers or RF TX's & Rx's
- Built to last
 - Stainless steel fastenings
- Weatherproof
 - Sealed to IP rating 66

- Accessories
 - Extended paxolin camera plate and stainless steel safety strap
- PTC Resistor heater
 - Progressive performance without the need of a thermostat [available on request]
- Cable management
 - Two entry glands at 20mm and one hole at 25mm for Kopex or Adaptaflex
- Integral wiper option
 - Micro switch self parking wiper with blade toggle action

Height [including gland] [in. / mm]	10.7 / 272
Width over sunshield [in. / mm]	8.1 / 205
Length over sunshield [in. / mm]	23.6 / 600
Depth inside base [in. / mm]	2.2 / 55
Capacity [L x W x H] [in. / mm]	20.1 x 5.5 x 5.7 / 510 x 140 x 145
Weight [lb. / kg]	11.9 / 5.4
Voltage	110VAC
Features	Integral wiper, Thermostat, Heater, Lightning Protection Circuit, M20 Cable Gland

Fixing centres	
Base [in. / mm]	4 x M6 holes in 4 / 101.6 PCD pattern
Camera Platform [in. / mm]	Paxolin Plate with 4 x .98 / 25 slots
Housing & Sunshield Colour	Goose Grey [BS4800 00A 05] & White [RAL9003]
Temperature [°F / °C]	-4 to 122 / -20 to 50
Cable Gland Kits [in. / mm]	2 x M20 Glands for .24 / 6 - .47 / 12 or .51 / 13 - .71 / 18 cables
Certificate Number	PA05/07061



VALUE ADDED ACCESSORIES

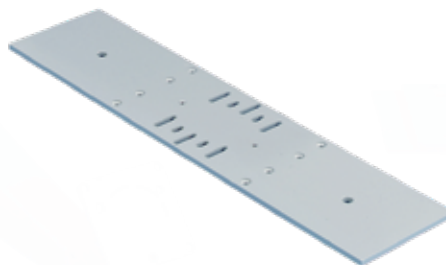
Quick Release Plate | Infra Red Mounting Plate | Sun Shield For Mitre 901 Housing

Good looking, light but strong, Will-Burt's supporting cast includes brackets with and without pan & tilt adjusters, a range of column spacers, quick release and infra red lamp mounting plates and a special extended sun shield for the 901 Mitre housing. The latest addition is a heat diffusing double skin Mitre sunshield for use in hot countries.

QUICK RELEASE PLATE



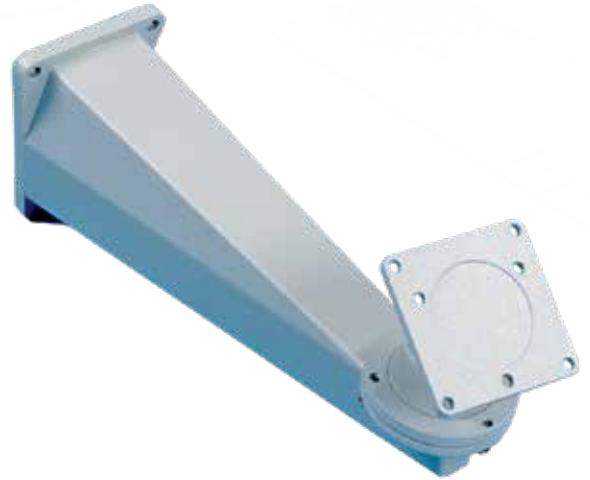
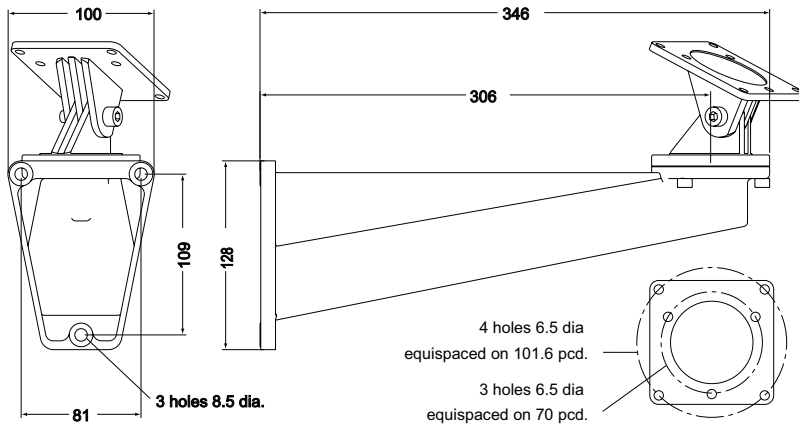
INFRA RED MOUNTING PLATE



SUN SHIELD FOR MITRE 901 HOUSING [7.8 in. / 200mm]



STETSON BRACKET



[Without Pan & Tilt Adjuster]

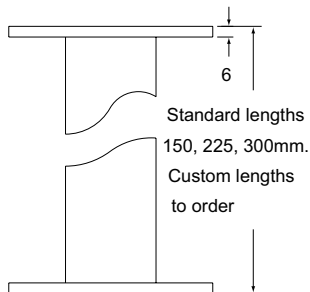
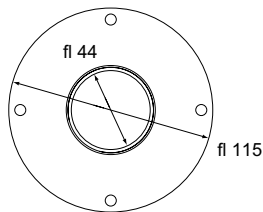
VALUE ADDED ACCESSORIES

Stetson Bracket | Fez Column Spacers

FEZ COLUMN SPACERS

[Available In Any Length]

Column spacers are manufactured with 4 X 6.5mm holes on a 101.6mm pcd (4"), or with 80mm dia end plates with 3 X 6.5mm holes on a 70mm pcd. Other plates and configurations can be made to order



**CONTACT YOUR SALES
REPRESENTATIVE TODAY**



Contact Us
Complete a Contact Form

WILL-BURT NORTH AMERICA

WORLD HEADQUARTERS

401 Collins Boulevard, Orrville, OH USA 44667
Telephone: +1 330 682 7015
Mast Customer Service: +1 330 684 4000
Fax: +1 330 684 1190
Email: info@willburt.com

WILL-BURT

UNITED KINGDOM

Unit 5b, Station Approach
Four Marks, Alton Hampshire, GU34 5HN, United Kingdom
Telephone: +44 (0) 1403 265532
Fax: +44 (0) 1403 259072 / Email: info@willburt.com

INTEGRATED TOWER SYSTEMS

A WILL-BURT COMPANY

2703 Dawson Road
Tulsa, OK 74110
Telephone: +1 800 850 8535
Fax: +1 918 749 8537
Email: programs@itstowers.com

ALUMA TOWER

A WILL-BURT COMPANY

1639 Old Dixie Highway
Vero Beach, Florida 32960
Telephone: +1 772 567 3423
Fax: +1 772 567 3432
Email: info@alumatower.com

WILL-BURT

GERMANY

Fischergasse 25
D-91344 Waischenfeld, Germany
Telephone: +49 9202 180
Fax: +49 9202 1811
Email: info@willburt.com

WILL-BURT ASIA

SINGAPORE SALES OFFICE

1 Fullerton Road, #02-01 One Fullerton,
Singapore 049213
Telephone: +65 6832 5689
Fax: +65 6722 0664 / Email: info@willburt.com

CLARK MASTS

A WILL-BURT COMPANY

18-20 Ringwood Road, Binstead, Isle of Wight, PO33 3PA, England
Telephone: +44 (0) 1983 563691/567090
Fax: +44 (0) 1983 566643/811157
E-mail: sales@clarkmasts.com

The Will-Burt Company, headquartered in Orrville, Ohio, USA, is the world's premier manufacturer of mobile telescoping masts, towers and pan and tilt positioners. We offer virtually every mobile payload elevation and integration solution for defense, government, first responders, cellular and mobile, broadcast, energy production and other markets. Will-Burt also offers contract manufacturing, metal fabrication, powder-coating, and rapid prototyping services. Will-Burt is an international company with offices and manufacturing in the USA, England, and Germany along with offices in Singapore. All Will-Burt Company manufacturing locations are backed by a certified ISO 9001:2015 Quality Management System. Incorporated in 1918, Will-Burt is 100% employee-owned and is classified as a small business.



Disclaimer: Dimensions and weights are for reference only and are subject to change.
Please contact Will-Burt for current engineering specifications.

© February, 2025
The Will-Burt Company
ISO 9001:2015
INNOVATION ELEVATED®