



▶ Visit
Corporate
Website

AMERICAS



▶ Watch
Product
Video



▶ Watch
Corporate
Video

INNOVATION ELEVATED®



HURRY-UP PORTABLE PUSH UP TELESCOPING MAST

Extended Heights up to 30 ft. | Payload Capacity up to 20 lb

The Hurry-Up manual push-up mast, can be extended to a full height of 30 feet (9 m) in one minute or less. The Hurry-Up mast features quick lock/release collars. Extend the mast manually by pushing up the sections and fixing them in position. This mast is ideal for fast deployment of light-weight antennas and instruments.

- Rigid azimuth locking collars
 - Quick direction adjustments
- Black anodized finish
 - Corrosion resistant
- Simple design and operation
 - Manual push-up deployment, retraction, and locking of mast
 - Positional feedback

ACCESSORIES

[Mounting option required]:

- Drive-on plate mounting
 - No guylines required
- Removable payload extension stub
 - Easy payload mounting
- External support brackets
 - Permanent vehicle mounting
- Hitch Mount
 - 2" Hitch - Removable



| Hurry-Up Models | 3-7 | 5-17 | 6-25 | 6.6-30 |
|------------------------------|---|---|---|---|
| Extended Height [ft. / m] | 6.8 / 2.1 | 17.3 / 5.3 | 24.9 / 7.6 | 29.5 / 9.0 |
| Nested Height [ft. / m] | 3.0 / 1.0 | 5.3 / 1.6 | 5.9 / 1.8 | 6.6 / 2.0 |
| Payload Capacity [lb / kg] | 20 / 9 | 20 / 9 | 20 / 9 | 20 / 9 |
| Approximate Weight [lb / kg] | 15 / 7 | 19 / 9 | 29 / 13 | 36 / 16 |
| Number of Sections | 3 | 4 | 6 | 6 |
| Tube Diameter [in. / mm] | 3.50-2.625 / 89-67 | 3.50-2.25 / 89-57 | 3.50-1.50 / 89-38 | 3.50-1.50 / 89-38 |
| Collar Type | Friction Locking | Friction Locking | Friction Locking | Friction Locking |
| Finish | Black Anodize, MIL-A-8625, Type II, Class 2 | Black Anodize, MIL-A-8625, Type II, Class 2 | Black Anodize, MIL-A-8625, Type II, Class 2 | Black Anodize, MIL-A-8625, Type II, Class 2 |

DEPLOYMENT OPTIONS



Hitch Mount
2" Removable Hitch



Drive-On Plate
No Guylines Required



External Mount
Shelf and Support Brackets



CLARK QT SERIES PNEUMATIC MASTS

Extended Heights up to 49.2 ft. | Payload Capacity up to 44 lb

The QT Range of lightweight telescopic pneumatic masts are designed to be portable and erected quickly where they are required. Available in a wide range of heights from 3m to 15m and in a range of sizes to suit varying headloads. It is a highly versatile system capable of being field mounted using a folding tripod stand or field guy set. Equally at home when mounted to a vehicle or shelter, the QT Range is designed to be versatile. Made from high strength 16 swg aluminium tube to save weight, the QT Range is non keyed and each section is fitted with a locking collar. Payloads are quickly attached using the quick clamp 24mm socket.

- Lightweight and portable
- Field, vehicle or shelter mounted
- Integral handpump
- Locking collars
- 5/8 in. / 24mm quick clamp top socket

QT SERIES MK VI TRIPOD

All MK VI tripods can either be stored vertically or horizontally and suitable for non-rotatable masts up to 15 meters. Additionally, a tripod mounting bracket is available for all QT models, allowing the mast to be fixed onto a wall, vehicle, or shelter. A ground, vehicle, or shelter tripod is equipped with a locking block which enables the user to attach this tripod to the tripod mounting bracket for compact vertical storage, with or without the mast.





| Clark QT Series | 3.5-13 | 5-20 | 6-26 | 7-33 | 9-40 | 9-49 |
|------------------------------------|------------------|------------------|------------------|------------------|------------------|------------------|
| Extended Height [ft. / m] | 13.1 / 4.0 | 20.0 / 6.10 | 26.1 / 7.95 | 33.3 / 10.15 | 40.0 / 12.20 | 49.2 / 15.0 |
| Nested Height [ft. / m] | 3.5 / 1.05 | 4.9 / 1.50 | 5.9 / 1.80 | 7.2 / 2.20 | 8.7 / 2.65 | 9.2 / 2.80 |
| Payload Capacity [lb. / kg] | 44 / 20 | 44 / 20 | 44 / 20 | 40 / 18 | 33 / 15 | 22 / 10 |
| Approximate Mast Weight [lb. / kg] | 18.8 / 8.5 | 23.9 / 10.8 | 29.2 / 13.2 | 33.1 / 15.0 | 39.7 / 18.0 | 46.3 / 21.0 |
| Number of Sections | 6 | 6 | 6 | 6 | 6 | 6 |
| Tube Diameter [in. / mm] | 3.5 / 88.9 | 3.5 / 88.9 | 3.5 / 88.9 | 3.5 / 88.9 | 3.5 / 88.9 | 3.5 / 88.9 |
| Collar Type | Non-Rotatable | Non-Rotatable | Non-Rotatable | Non-Rotatable | Non-Rotatable | Non-Rotatable |
| Time to Extend [seconds] | 15 | 30 | 40 | 50 | 60 | 70 |
| Time to Retract [seconds] | 10 | 20 | 30 | 40 | 45 | 60 |
| Finish | Natural Anodized | Natural Anodized | Natural Anodized | Natural Anodized | Natural Anodized | Natural Anodized |

| Clark MK VI Tripod | CM-36585 | CM-36586 | CM-36587 | CM-36588 | CM-36589 | CM-36590 |
|---------------------------|-------------|-------------|-------------|-------------|-------------|-------------|
| Extended Height [ft. / m] | 13.1 / 4.0 | 20.0 / 6.1 | 26.0 / 7.9 | 33.3 / 10.1 | 40.0 / 12.2 | 49.2 / 15.0 |
| Weight [lb / kg] | 25.2 / 11.4 | 28.0 / 12.7 | 30.9 / 14.0 | 34.0 / 15.4 | 36.9 / 16.7 | 40.0 / 18.0 |

A full range of interchangeable accessories and payload adaptors are available for the Clark QT Series Pneumatic Mast



Large Universal
Antenna Adaptor

Camera Adaptor

2" Hitch
Mount Assembly

QT Mounting Post

Wheel Mounting
Bracket

COMMUNICATIONS



Center Collar Breach Load



EZ Raze™ System



Mast Tube Lift Winch

ANTENNAMAST MODEL AM2

Extended Heights up to 49.2 ft. | Payload Capacity up to 100 lb

The AntennaMast model AM2 is a rugged, lightweight, man-portable, aluminum tripod mast designed for rapid payload deployment. The AM2 is extremely flexible and reliable and is capable of elevating multiple devices on a single mast.

The AntennaMast Model AM2 is available with three different payload deployment options. The EZ Raze™ system with cable winching device and safety brake enables the user to lift and lower heavier payloads in a safe and controlled manner without disassembling the mast system.

The mast tube lift winch provides a mechanical assist for the lifting of the mast tubes for heavier payloads.

The user is also able to elevate the mast tubes and payload by breach loading the tubes through the tripod center collar.

See
willburt.com
for complete
model range and
accessories

- Rapid set-up
 - Includes a tripod with two (2) built-in levels and large no-slip adjustment knobs that are easy to operate. Interlocking mast tubes allow for directional adjustment of the payload
- Flexible
 - A variety of payload adaptors and accessories are available to accomplish diverse missions
- Simple
 - No tools or special training are needed for deployment
- Rugged
 - Designed to meet MIL-STD-810 for use in a variety of harsh environments
- Durable
 - Components are constructed of aluminum and stainless steel and are covered by a two (2) year warranty
- Complete system
 - AM2 system includes all components needed to safely deploy rated payload at selected height
- Transportable
 - Every mast system comes with a rugged wheeled transport bag designed for easy unloading and loading
- A full range of interchangeable accessories and payload adaptors are available for the AntennaMast

| Height [m / ft.] | Model # | Deployable Load [lb / kg] | Deployment Method | Deployment Time | System Weight [lb / kg] | Guying [Primary / Secondary] | Wind Survival Speed [mph / km/h] |
|--------------------------------|-----------|---------------------------------|----------------------|---------------------|-------------------------------|------------------------------------|--|
| AM2 Standard Deployment | | | | | | | |
| 49.2 / 15 | 715061500 | 20 / 9.1 | Manual | 20-30 [2-4 persons] | 103.6 / 47 | Top / Mid Guying Optional | 70 / 113 @ 4 sq. ft. |
| 45.9 / 14 | 715061400 | 25 / 11.3 | Manual | 15-20 [1-3 persons] | 100.5 / 45.6 | Top / Mid Guying Optional | 70 / 113 @ 4 sq. ft. |
| 42.7 / 13 | 715061300 | 30 / 13.6 | Manual | 15-20 [1-3 persons] | 97 / 44 | Top / Mid Guying Optional | 70 / 113 @ 4 sq. ft. |
| 39.4 / 12 | 715061200 | 35 / 15.9 | Manual | 15-20 [1-3 persons] | 93.8 / 42.5 | Top / Mid Guying Optional | 70 / 113 @ 4 sq. ft. |
| 36.1 / 11 | 715061100 | 40 / 18.1 | Manual | 15-20 [1-3 persons] | 90.5 / 41.1 | Top / Mid Guying Optional | 70 / 113 @ 4 sq. ft. |
| 32.8 / 10 | 715061000 | 50 / 22.7 | Manual | 15-18 [1-3 persons] | 87.3 / 39.6 | Top / Mid Guying Optional | 70 / 113 @ 6 sq. ft. |
| 29.5 / 9 | 715060900 | 55 / 24.9 | Manual | 15-18 [1-3 persons] | 84 / 38.1 | Top | 70 / 113 @ 6 sq. ft. |
| 26.2 / 8 | 715060800 | 55 / 24.9 | Manual | 15-18 [1-3 persons] | 80.8 / 36.7 | Top | 70 / 113 @ 6 sq. ft. |
| 23 / 7 | 715060700 | 60 / 27.2 | Manual | 10-18 [1-2 persons] | 77.6 / 35.2 | Top | 70 / 113 @ 6 sq. ft. |
| 19.7 / 6 | 715060600 | 60 / 27.2 | Manual | 10-18 [1-2 persons] | 74.3 / 33.7 | Top | 70 / 113 @ 6 sq. ft. |
| 16.4 / 5 | 715060500 | 65 / 29.5 | Manual | 5-10 [1-2 persons] | 71 / 32.2 | Top | 70 / 113 @ 6 sq. ft. |
| 13.1 / 4 | 715060400 | 70 / 34 | Manual | 5-10 [1-2 persons] | 67.8 / 30.8 | Top | 70 / 113 @ 6 sq. ft. |
| 9.8 / 3 | 715060300 | 85 / 38.6 | Manual | 5-10 [1-2 persons] | 64.6 / 29.3 | Top | 70 / 113 @ 6 sq. ft. |
| 6.6 / 2 | 715060200 | 100 / 45.4 | Manual | 5-10 [1-2 persons] | 61.3 / 27.8 | Top | 70 / 113 @ 6 sq. ft. |

| | | | | | | | |
|--------------------------------------|-----------|------------|------------|---------------------|--------------|---------------------------|----------------------|
| AM2 with Mast Tube Lift Winch | | | | | | | |
| 49.2 / 15 | 715071500 | 20 / 9.1 | Lift Winch | 20-30 [2-4 persons] | 110.6 / 50.2 | Top / Mid Guying Optional | 70 / 113 @ 4 sq. ft. |
| 45.9 / 14 | 715071400 | 25 / 11.3 | Lift Winch | 15-20 [1-3 persons] | 107.5 / 48.8 | Top / Mid Guying Optional | 70 / 113 @ 4 sq. ft. |
| 42.7 / 13 | 715071300 | 30 / 13.6 | Lift Winch | 15-20 [1-3 persons] | 104.5 / 47.4 | Top / Mid Guying Optional | 70 / 113 @ 4 sq. ft. |
| 39.4 / 12 | 715071200 | 35 / 15.9 | Lift Winch | 15-20 [1-3 persons] | 100.8 / 45.7 | Top / Mid Guying Optional | 70 / 113 @ 4 sq. ft. |
| 36.1 / 11 | 715071100 | 40 / 18.1 | Lift Winch | 15-20 [1-3 persons] | 97.5 / 44.2 | Top / Mid Guying Optional | 70 / 113 @ 4 sq. ft. |
| 32.8 / 10 | 715071000 | 50 / 22.7 | Lift Winch | 15-18 [1-3 persons] | 94.3 / 42.8 | Top / Mid Guying Optional | 70 / 113 @ 6 sq. ft. |
| 29.5 / 9 | 715070900 | 55 / 24.9 | Lift Winch | 15-18 [1-3 persons] | 91 / 41.3 | Top | 70 / 113 @ 6 sq. ft. |
| 26.2 / 8 | 715070800 | 55 / 24.9 | Lift Winch | 15-18 [1-3 persons] | 87.8 / 39.8 | Top | 70 / 113 @ 6 sq. ft. |
| 23 / 7 | 715070700 | 60 / 27.2 | Lift Winch | 10-18 [1-2 persons] | 84.6 / 38.4 | Top | 70 / 113 @ 6 sq. ft. |
| 19.7 / 6 | 715070600 | 60 / 27.2 | Lift Winch | 10-18 [1-2 persons] | 81.3 / 36.9 | Top | 70 / 113 @ 6 sq. ft. |
| 16.4 / 5 | 715070500 | 65 / 29.5 | Lift Winch | 5-10 [1-2 persons] | 78 / 35.4 | Top | 70 / 113 @ 6 sq. ft. |
| 13.1 / 4 | 715070400 | 70 / 34 | Lift Winch | 5-10 [1-2 persons] | 74.8 / 33.9 | Top | 70 / 113 @ 6 sq. ft. |
| 9.8 / 3 | 715070300 | 85 / 38.6 | Lift Winch | 5-10 [1-2 persons] | 71.6 / 32.5 | Top | 70 / 113 @ 6 sq. ft. |
| 6.6 / 2 | 715070200 | 100 / 45.4 | Lift Winch | 5-10 [1-2 persons] | 68.3 / 31 | Top | 70 / 113 @ 6 sq. ft. |

| | | | | | | | |
|--|-----------|------------|------------|---------------------|--------------|---------------------------|----------------------|
| AM2 with EZ Raze Payload Elevation System | | | | | | | |
| 49.2 / 15 | 715071500 | 20 / 9.1 | Lift Winch | 20-30 [2-4 persons] | 110.6 / 50.2 | Top / Mid Guying Optional | 70 / 113 @ 4 sq. ft. |
| 45.9 / 14 | 715071400 | 25 / 11.3 | Lift Winch | 15-20 [1-3 persons] | 107.5 / 48.8 | Top / Mid Guying Optional | 70 / 113 @ 4 sq. ft. |
| 42.7 / 13 | 715071300 | 30 / 13.6 | Lift Winch | 15-20 [1-3 persons] | 104.5 / 47.4 | Top / Mid Guying Optional | 70 / 113 @ 4 sq. ft. |
| 39.4 / 12 | 715071200 | 35 / 15.9 | Lift Winch | 15-20 [1-3 persons] | 100.8 / 45.7 | Top / Mid Guying Optional | 70 / 113 @ 4 sq. ft. |
| 36.1 / 11 | 715071100 | 40 / 18.1 | Lift Winch | 15-20 [1-3 persons] | 97.5 / 44.2 | Top / Mid Guying Optional | 70 / 113 @ 4 sq. ft. |
| 32.8 / 10 | 715071000 | 50 / 22.7 | Lift Winch | 15-18 [1-3 persons] | 94.3 / 42.8 | Top / Mid Guying Optional | 70 / 113 @ 6 sq. ft. |
| 29.5 / 9 | 715070900 | 55 / 24.9 | Lift Winch | 15-18 [1-3 persons] | 91 / 41.3 | Top | 70 / 113 @ 6 sq. ft. |
| 26.2 / 8 | 715070800 | 55 / 24.9 | Lift Winch | 15-18 [1-3 persons] | 87.8 / 39.8 | Top | 70 / 113 @ 6 sq. ft. |
| 23 / 7 | 715070700 | 60 / 27.2 | Lift Winch | 10-18 [1-2 persons] | 84.6 / 38.4 | Top | 70 / 113 @ 6 sq. ft. |
| 19.7 / 6 | 715070600 | 60 / 27.2 | Lift Winch | 10-18 [1-2 persons] | 81.3 / 36.9 | Top | 70 / 113 @ 6 sq. ft. |
| 16.4 / 5 | 715070500 | 65 / 29.5 | Lift Winch | 5-10 [1-2 persons] | 78 / 35.4 | Top | 70 / 113 @ 6 sq. ft. |
| 13.1 / 4 | 715070400 | 70 / 34 | Lift Winch | 5-10 [1-2 persons] | 74.8 / 33.9 | Top | 70 / 113 @ 6 sq. ft. |
| 9.8 / 3 | 715070300 | 85 / 38.6 | Lift Winch | 5-10 [1-2 persons] | 71.6 / 32.5 | Top | 70 / 113 @ 6 sq. ft. |
| 6.6 / 2 | 715070200 | 100 / 45.4 | Lift Winch | 5-10 [1-2 persons] | 68.3 / 31 | Top | 70 / 113 @ 6 sq. ft. |



EXPEDITION SERIES RANGER MAST

Extended Heights up to 60 ft. | Payload Capacity up to 40 lb

The lightest, most stable, single-man portable field mast in the world

The Will-Burt Expedition Series offers a variety of added features for increased performance and convenience. The system includes a 6 in. (150 mm) diameter payload adapter. The Ranger™ Mast has a large tripod base, making the mast very stable. It is erected with 4 ft. (1.2m) tube sections to heights from 8 to 60 ft. (2.5 to 18.3 m). A custom payload interface can be designed to fit specific needs. The Expedition Series tripod and mast are constructed of carbon composite material.

- Lighter weight than aluminum
 - Easier to transport and deploy
- Stronger
 - More durable – won't bend or break
- Stiffer
 - More stable for payloads
- Quicker, easier set-up and retraction
 - Faster deployment
- Easier transportability
 - Two compact transport pack options allow you to select the best one to fit your deployment needs
- Large, adjustable tripod
- Friction locks for height adjustment
- Ergonomic tube lifter
- Two highly visible bubble levels
- A full range of interchangeable accessories and payload adaptors are available for the Expedition Series

See
willburt.com
for complete
model range



| Height [m / ft.] | Model # | Deployable Load [lb / kg] | Deployment Method | Deployment Time | System Weight [lb / kg] | Guying [Primary / Secondary] | Wind Survival Speed [mph / km/h] |
|--|-----------|---------------------------------|----------------------|---------------------|-------------------------------|------------------------------------|--|
| Ranger Mast Standard Deployment | | | | | | | |
| 60 / 18.3 | 714076000 | 5 / 2.3 | Manual | 20-30 [2-4 persons] | 90 / 40.8 | Top / Mid Guying Optional | 70 / 113 @ 2 sq. ft. |
| 56 / 17.1 | 714075600 | 5 / 2.3 | Manual | 20-30 [2-4 persons] | 87 / 39.5 | Top / Mid Guying Optional | 70 / 113 @ 2 sq. ft. |
| 52 / 15.8 | 714075200 | 10 / 4.5 | Manual | 15-20 [1-3 persons] | 84 / 38.1 | Top / Mid Guying Optional | 70 / 113 @ 2 sq. ft. |
| 48 / 14.6 | 714074800 | 10 / 4.5 | Manual | 15-20 [1-3 persons] | 82 / 37.2 | Top / Mid Guying Optional | 70 / 113 @ 2 sq. ft. |
| 44 / 13.4 | 714074400 | 15 / 6.8 | Manual | 15-20 [1-3 persons] | 79 / 35.8 | Top / Mid Guying Optional | 70 / 113 @ 2 sq. ft. |
| 40 / 12.2 | 714074000 | 20 / 9.1 | Manual | 15-18 [1-3 persons] | 73 / 33.1 | Top / Mid Guying Optional | 70 / 113 @ 2 sq. ft. |
| 36 / 11 | 714073600 | 25 / 11.3 | Manual | 15-18 [1-3 persons] | 70 / 31.8 | Top / Mid Guying Optional | 70 / 113 @ 2 sq. ft. |
| 32 / 9.8 | 714073200 | 30 / 13.6 | Manual | 15-18 [1-3 persons] | 68 / 30.8 | Top | 70 / 113 @ 4 sq. ft. |
| 28 / 8.5 | 714072800 | 35 / 15.9 | Manual | 10-18 [1-2 persons] | 65 / 29.5 | Top | 70 / 113 @ 4 sq. ft. |
| 24 / 7.3 | 714072400 | 40 / 18.1 | Manual | 10-18 [1-2 persons] | 63 / 28.6 | Top | 70 / 113 @ 4 sq. ft. |
| 20 / 6.1 | 714072000 | 40 / 18.1 | Manual | 5-10 [1-2 persons] | 60 / 27.2 | Top | 70 / 113 @ 4 sq. ft. |
| 16 / 4.9 | 714071600 | 40 / 18.1 | Manual | 5-10 [1-2 persons] | 58 / 26.3 | Top | 70 / 113 @ 4 sq. ft. |
| 12 / 3.7 | 714071200 | 40 / 18.1 | Manual | 5-10 [1-2 persons] | 56 / 25.4 | Top | 70 / 113 @ 4 sq. ft. |

| | | | | | | | |
|--|-----------|-----------|----------|---------------------|------------|-----|------------------------|
| Ranger Mast with EZ Raze Payload Elevation System | | | | | | | |
| 60 / 18.3 | 714176000 | 30 / 13.6 | Carriage | 20-30 [2-4 persons] | 115 / 52.2 | Top | 70 / 113 @ 1 sq. ft. |
| 56 / 17.1 | 714175600 | 35 / 15.9 | Carriage | 20-30 [2-4 persons] | 113 / 51.3 | Top | 70 / 113 @ 1 sq. ft. |
| 52 / 15.8 | 714175200 | 35 / 15.9 | Carriage | 15-20 [1-3 persons] | 110 / 49.9 | Top | 70 / 113 @ 1.5 sq. ft. |
| 48 / 14.6 | 714174800 | 40 / 18.1 | Carriage | 15-20 [1-3 persons] | 108 / 49 | Top | 70 / 113 @ 1.5 sq. ft. |
| 44 / 13.4 | 714174400 | 40 / 18.1 | Carriage | 15-20 [1-3 persons] | 105 / 47.6 | Top | 70 / 113 @ 2 sq. ft. |
| 40 / 12.2 | 714174000 | 40 / 18.1 | Carriage | 15-18 [1-3 persons] | 99 / 44.9 | Top | 70 / 113 @ 3 sq. ft. |
| 36 / 11 | 714173600 | 40 / 18.1 | Carriage | 15-18 [1-3 persons] | 96 / 43.5 | Top | 70 / 113 @ 4 sq. ft. |
| 32 / 9.8 | 714173200 | 40 / 18.1 | Carriage | 15-18 [1-3 persons] | 94 / 42.6 | Top | 70 / 113 @ 4 sq. ft. |
| 28 / 8.5 | 714172800 | 40 / 18.1 | Carriage | 10-18 [1-2 persons] | 91 / 41.3 | Top | 70 / 113 @ 4 sq. ft. |
| 24 / 7.3 | 714172400 | 40 / 18.1 | Carriage | 10-18 [1-2 persons] | 89 / 40.4 | Top | 70 / 113 @ 4 sq. ft. |
| 20 / 6.1 | 714172000 | 40 / 18.1 | Carriage | 5-10 [1-2 persons] | 86 / 39 | Top | 70 / 113 @ 4 sq. ft. |
| 16 / 4.9 | 714171600 | 40 / 18.1 | Carriage | 5-10 [1-2 persons] | 84 / 38.1 | Top | 70 / 113 @ 4 sq. ft. |
| 12 / 3.7 | 714071200 | 40 / 18.1 | Carriage | 5-10 [1-2 persons] | 82 / 37.2 | Top | 70 / 113 @ 4 sq. ft. |

A full range of interchangeable accessories and payload adaptors are available for the Expedition Series
See willburt.com for complete model range



Swivel 4-point Guy Collar

Rigid Guy Collar

EZ-Raze

Cup Holder

Multi-Use Adapter Plate

SCREW DRIVE

Designed for manual or motorized operation, Will-Burt's QEAM [Quick Erecting Antenna Mast] Family of lightweight composite or aluminum masts elevate light payloads for ground-mounted or vehicle, trailer and shelter deployment.

Will-Burt's Screw Drive QEAM is a lightweight, high strength telescopic mast that offers a rigid, stable platform for elevating critical payloads.

- Easy manual crank up
 - Reliable deployment without power
- Automatic locking collars
 - Locks at any desired height
 - Patented latch mechanism
- Standard ground mounting kits with guylines and transport bag included
- Optional vehicle and shelter mounting kits available



QUICK ERECTING ANTENNA MAST [QEAM]

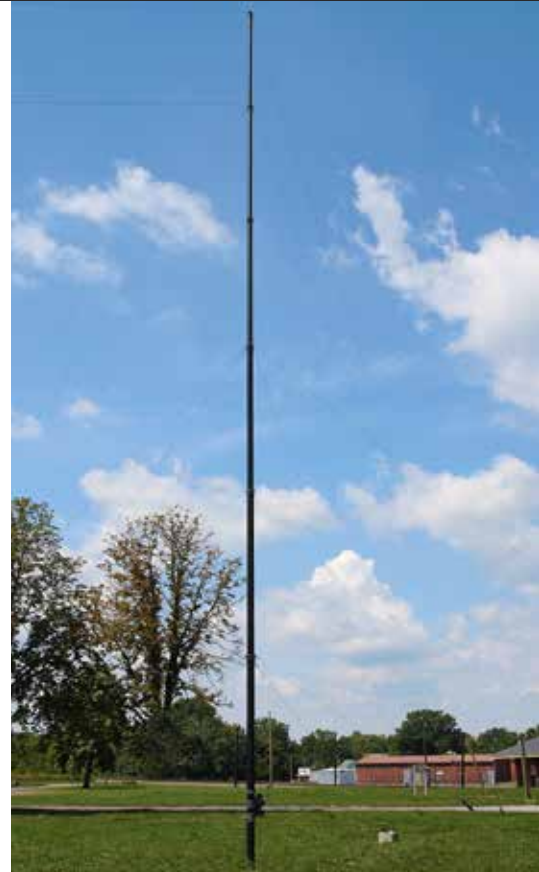
Extended Heights up to 112 ft. | Payload Capacity up to 180 lb

Screw Drive and
Strap Drive Models

STRAP DRIVE

The Strap Driven QEAM uses an internal strap wound between tube sections for mast elevation. Designed for manual operation, The Strap Drive QEAM has heavier payload weight-lifting capability, and is available in 21, 25, 30 and 34 meter heights.

- Maintains azimuth – minimal twist deflection
 - Reliable full-length external keyways
- Positions payload at any height
 - Automatic locking collars – patented latch system
- Manual mechanical drive
 - Reliable deployment without power
- Automatic locking collars
 - Locks at any desired height with patented latch mechanism
- Mechanical stops
- Prevents over-extension
- Full length keys on sections
 - Prevents twist
- Maintenance free
 - Polymer drive nuts require no greasing
- Built in cable management
 - Cable loops added at collars
- Corrosion resistant
 - All parts are anodized aluminum & stainless steel
 - Drive crank is a completely sealed mechanism





| QEAM Models | TM 10 [Aluminum] | TM 21 | TM 25 | TM 30 | TM 34 |
|--|---------------------|-----------------------------------|-----------------------------------|-----------------------------------|-----------------------------------|
| Extended Height [ft. / m] | 32.8 / 10 | 68.9 / 21 | 82 / 25 | 98.4 / 30 | 112 / 34 |
| Nested Height [ft. / m] | 8 / 2.4 | 14.6 / 4.45 | 14.8 / 4.5 | 19.3 / 5.9 | 19 / 5.8 |
| Payload Capacity [lb / kg] | 15 / 7 | 180 / 80 | 150 / 68 | 150 / 68 | 110 / 50 |
| Weight [Mast Only] [lb / kg] | 42 / 19 | 197 / 90 | 220 / 100 | 250 / 114 | 265 / 121 |
| Weight [Accessory Kit] [lb / kg] | 52 / 24 | 245 / 111 | 275 / 125 | 275 / 125 | 275 / 125 |
| Number of Sections | 5 | 6 | 7 | 6 | 7 |
| Guying | 2 level / 3 way | 4 level / 4 way | 5 level / 4 way | 5 level / 4 way | 5 level / 4 way |
| Ice load [in. / mm] | 0.5 / 12 | 0.5 / 12 | 0.5 / 12 | 0.5 / 12 | 0.5 / 12 |
| Maximum Erection Wind* [mph / km/h] | 25 / 40 | 25 / 40 | 25 / 40 | 25 / 40 | 25 / 40 |
| Operational Wind [mph / km/h] | 60 / 97 | 60 / 97 | 60 / 97 | 60 / 97 | 60 / 97 |
| Survival Wind [mph / km/h] | 80 / 128 | 80 / 128 | 80 / 128 | 80 / 128 | 80 / 128 |
| Surface Mounting | ±15° slope | ±15° slope | ±15° slope | ±15° slope | ±15° slope |
| Deployment Time | 2 persons, 7.5 min | 3 persons, 25 min | 3 persons, 30 min | 3 persons, 30 min | 3 persons, 30 min |
| Drive System | Screw Drive | Strap Drive | Strap Drive | Strap Drive | Strap Drive |
| Maximum Sail Area [ft. ² / m ²] | 6 / 0.6 CD=1.5 | 6 / 0.6 CD=1.5 | 6 / 0.6 CD=1.5 | 6 / 0.6 CD=1.5 | 6 / 0.6 CD=1.5 |
| Finish | CARC Green | MIL-A-8625 Type II, CL 2 Black | MIL-A-8625 Type II, CL 2 Black | MIL-A-8625 Type II, CL 2 Black | MIL-A-8625 Type II, CL 2 Black |

Please contact Will-Burt Engineering for current and exact specifications. *Must be guyed for wind speeds over 25 mph / 40km/h

CONTACT YOUR SALES REPRESENTATIVE TODAY



Contact Us
Complete a Contact Form

WILL-BURT NORTH AMERICA

WORLD HEADQUARTERS

401 Collins Boulevard, Orrville, OH USA 44667
Telephone: +1 330 682 7015
Mast Customer Service: +1 330 684 4000
Fax: +1 330 684 1190
Email: info@willburt.com

WILL-BURT

UNITED KINGDOM

Unit 5b, Station Approach
Four Marks, Alton Hampshire, GU34 5HN, United Kingdom
Telephone: +44 (0) 1403 265532
Fax: +44 (0) 1403 259072 / Email: info@willburt.com

INTEGRATED TOWER SYSTEMS

A WILL-BURT COMPANY

2703 Dawson Road
Tulsa, OK 74110
Telephone: +1 800 850 8535
Fax: +1 918 749 8537
Email: programs@itstowers.com

ALUMA TOWER

A WILL-BURT COMPANY

1639 Old Dixie Highway
Vero Beach, Florida 32960
Telephone: +1 772 567 3423
Fax: +1 772 567 3432
Email: info@alumatower.com

WILL-BURT

GERMANY

Fischergasse 25
D-91344 Waischenfeld, Germany
Telephone: +49 9202 180
Fax: +49 9202 1811
Email: info@willburt.com

WILL-BURT ASIA

SINGAPORE SALES OFFICE

1 Fullerton Road, #02-01 One Fullerton,
Singapore 049213
Telephone: +65 6832 5689
Fax: +65 6722 0664 / Email: info@willburt.com

CLARK MASTS

A WILL-BURT COMPANY

18-20 Ringwood Road, Binstead, Isle of Wight, PO33 3PA, England
Telephone: +44 (0) 1983 563691/567090
Fax: +44 (0) 1983 566643/811157
E-mail: sales@clarkmasts.com

The Will-Burt Company, headquartered in Orrville, Ohio, USA, is the world's premier manufacturer of mobile telescoping masts, towers and pan and tilt positioners. We offer virtually every mobile payload elevation and integration solution for defense, government, first responders, cellular and mobile, broadcast, energy production and other markets. Will-Burt also offers contract manufacturing, metal fabrication, powder-coating, and rapid prototyping services. Will-Burt is an international company with offices and manufacturing in the USA, England, and Germany along with offices in Singapore. All Will-Burt Company manufacturing locations are backed by a certified ISO 9001:2015 Quality Management System. Incorporated in 1918, Will-Burt is 100% employee-owned and is classified as a small business.



Disclaimer: Dimensions and weights are for reference only and are subject to change.
Please contact Will-Burt for current engineering specifications.

© February, 2025
The Will-Burt Company
ISO 9001:2015
INNOVATION ELEVATED®