



EMERGENCY MANAGEMENT LIGHTING, VIDEO AND ELEVATION SOLUTIONS



The Will-Burt Company, located in Orrville, Ohio, USA, is the world's premier manufacturer of telescoping pneumatic and mechanical masts, light towers, video towers and lattice tower elevation solutions - the world's one stop shop offering virtually every payload elevation solution from one source - for law enforcement, military, fire, cellular, broadcast, entertainment and other applications. Will-Burt is an employee-owned company that has been operating nearly 100 years, providing the best elevation and payload integration solutions available. Will-Burt has a strong commitment to the continuous improvement process set forth by its ISO 9001:2015 certified quality system.



Will-Burt Night Scan® Light Tower and Video Advantages

- Minimal vehicle space required with lightweight and compact design
- Full internal wired design protects payload power and data transmission lines
- Provides 360° of light - dual tilt feature provides light in two directions at once
- Fast and Flexible - light at any height and in any direction and automatic stow function
- Reliable in extreme environments - tested and proven in the cold and ice of Canada and the heat and dust of Afghanistan
- Designed to accommodate cameras in combination with lights or camera only
- Easy and safe to operate with multi-function hand held control with LED information screen

Will-Burt can install lights on any vehicle, new or already in service.

Squad / Utility and Mobile Command, Pumper, Engine, Rescue, Hazmat, Aerial, ARFF



TABLE OF CONTENTS



4-13

**NIGHT SCAN®
LIGHTING SOLUTIONS**



14-15

**TOWER AND LIGHT
PACKAGE OPTIONS**



16-19

**WILL-BURT AND
NIGHT SCAN® LED
LAMPS**



20-21

**LIGHTING
ACCESSORIES**



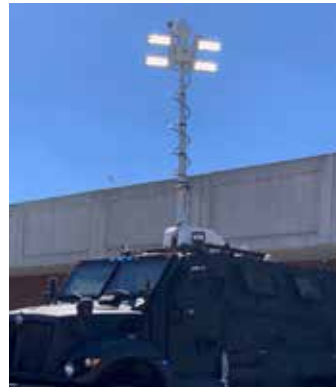
22-37

**ELEVATION
SOLUTIONS**



38-41

**VIDEO CAMERAS AND
CONTROLLERS**



42-43

**INTEGRATED VIDEO
SYSTEMS**



44-52

**MOBILE AND STATIC
POSITIONERS**



NIGHT SCAN FIT

Extended Heights up to 7.5 ft. | Up to 80,000 Lumens

The Night Scan Fit is a fully capable light tower with powerful LEDs to illuminate your work without blinding your crew. The lightweight design and narrow footprint allows the tower to be installed on your apparatus. A remote-controlled positioner puts the light where you need it regardless of your apparatus' position and most importantly, it turns night into day, helping to keep your crew safe.

- Narrow - less than 16" with WB 140 lights
- Lightweight - less than 100 pounds with WB 140 lights
- Directs powerful LED light where you need it, regardless of the apparatus' position
- Easy to install, Self-contained system only requires 12V power



lightweight design and narrow footprint allows the tower to be installed on your apparatus



Specifications

Night Scan Fit	WB 140	X200
Height Extended [ft. / m]	3.25 / 1.0	7.5 / 2.3
System Weight Range [lb. / kg]	94 / 43	110 / 50
Auto Deploy and Auto Stow®	Yes	Yes
Time to Light	5 seconds	5.5 seconds
Number of Lights Available	4	4
Light Type Available	LED	LED
Maximum Lumens	56000	80000
Full Pan and Tilt Light Positioning	Yes	Yes
Opposable Light Fixtures	No	No
VDC / Watts Maximum	12 or 24 / 200	12 or 24 / 500
VAC / Watts Maximum	N/A	N/A
Profiler - Space-Saving Fixture Option	Yes	Yes
D-TEC® Power Line Detection System Option	No	No
Beacon Light Option	Yes	Yes
Camera Option	No	No
Color Option	Standard Color White. Black Option for Additional charge.	
*Wind Speed Survival [mph / km/h]	140+ / 225+	140+ / 225+
Operating Temperature [°F / °C]	-22 to +149 / -30 to +65	

*Varies depending on light package - 125% NFPA Safety Factor





Profiler Narrow Light Fixture option

NIGHT SCAN CHIEF

Extended Heights up to 7.5 ft. Up to 140,000 Lumens

The Will-Burt Night Scan® Chief is a roof-mounted, fold-down light tower which requires no interior vehicle space. It is typically used on medium-size rescue, pumper rescue, service and utility vehicles. The Night Scan® Chief features a self-contained air system (no external air supply needed) and is available with all DC (12V/24V DC) operations in which generator or inverter is not required.



Roof-mounted, fold-down light tower requires no interior vehicle space

Specifications

Night Scan Chief	1.0	1.8	2.3
Height Extended [ft. / m]	3.25 / 1	6 / 1.8	7.5 / 2.3
System Weight Range [lb. / kg]	97 / 44 - 135 / 61		
Auto Deploy and Auto Stow®	Yes	Yes	Yes
Time to Light	5.5 seconds	8 seconds	10 seconds
Number of Lights Available	2 or 4	2 or 4	2, 4 or 6
Light Type Available	LED	LED	LED
Maximum Lumens	80000	112000	120000
Full Pan and Tilt Light Positioning	Yes	Yes	Yes
Opposable Light Fixtures	No	No	No
VDC / Watts Maximum	12 or 24 / 500	12 or 24 / 640	12 or 24 / 920
VAC / Watts Maximum	120 or 240 / 6000	120 or 240 / 6000	120 or 240 / 6000
Profiler - Space-Saving Fixture Option	Yes - 2 or 3 lights	Yes - 2 or 3 lights	Yes - 2 or 3 lights
D-TEC® Power Line Detection System Option	No	No	No
Beacon Light Option	Yes	Yes	Yes
Camera Option	Yes	Yes	Yes
Color Option	Standard Color White. Black Option for Additional charge.		
*Wind Speed Survival [mph / km/h]	140+ / 225+	140+ / 225+	114 - 140 / 184 - 225
Operating Temperature [°F / °C]	-22 to +149 / -30 to +65		

*Varies depending on light package - 125% NFPA Safety Factor





NIGHT SCAN POWERLITE

Extended Heights up to 15 ft. | Up to 240,000 Lumens

The Will-Burt Night Scan® Powerlite is a roof-mounted, fold-down light tower which requires no interior vehicle space. It is typically used on heavy-rescue vehicles, mobile command centers and airport ARFF vehicles. Opposable light fixtures provide equal lighting forward and backward at the same time - 360° of light. Delivering up to 240,000 lumens, the Night Scan® Powerlite is ideal on any vehicle where maximum light is required. The Powerlite 3.0 and 4.5 can be elevated with truck air or optional on-board compressor. The 2.3 comes with a built-in compressor.



Roof-mounted, fold-down light tower requires no interior vehicle space



Specifications

Night Scan Powerlite	2.3	3.0	4.5	6.0	7.5
Height Extended [ft. / m]	7.5 / 2.3	10 / 3.0	15 / 4.5	20 / 6	25 / 7.5
System Weight Range [lb. / kg]	139 / 63 - 178 / 81			161 / 73 - 199 / 91	
Auto Deploy and Auto Stow®	Yes	Yes	Yes	Yes	Yes
Time to Light [seconds]	8	12	14	17	21
Number of Lights Available	4	4, 6, 8 or 12	4, 6, 8 or 12	2, 4 or 6	2 or 4
Light Type Available	LED	LED	LED	LED	LED
Maximum Lumens	120000	240000	240000	210000	140000
Full Pan and Tilt Light Positioning	Yes	Yes	Yes	Yes	Yes
Opposable Light Fixtures	Yes	Yes	Yes	Yes	Yes
VDC / Watts Maximum	12 or 24 / 920	12 or 24 / 1380	12 or 24 / 1380	24 / 920	24 / 460
VAC / Watts Maximum	N/A	120 or 240 / 9000	120 or 240 / 9000	120 or 240 / 9000	120 or 240 / 6000
Profiler - Space-Saving Fixture Option	No	Yes - 2 or 3 lights	Yes - 2 or 3 lights	Yes	Yes
D-TEC® Power Line Detection System Option	No	Yes	Yes	Yes	Yes
Beacon Light Option	Yes	Yes	Yes	Yes	Yes
Camera Option	Yes	Yes	Yes	Yes	Yes
Color Option	Standard Color White. Black Option for Additional Charge.				
*Wind Speed Survival [mph / km/h]	114 - 140 / 184 - 225	86 - 140 / 138 - 225	69 - 118 / 111 - 190	64 - 94 / 103 - 151	62 - 78 / 100 - 126
Operating Temperature [°F / °C]	-22 to +149 / -30 to +65				

*Varies depending on light package - 125% NFPA Safety Factor



Internally wired masts protect power cords and cables from harsh weather conditions.



NIGHT SCAN VERTICAL

Extended Heights up to 30 ft. | Up to 240,000 Lumens

The Will-Burt Night Scan® Vertical Tower is a vertically mounted light tower which may be installed internally or externally to the side or rear of a vehicle. Used for elevating lights and/or cameras, it is typically used on heavy rescue vehicles, full-size mobile command centers, airport ARFF vehicles and large wreckers. Delivering up to 240,000 lumens with the Atherion IQ light package, the Night Scan® Vertical Light Tower is ideal on any vehicle where maximum light and height are required.



May be installed internally or externally to the side or rear of a vehicle



Available with Night Scan IQ Intelligent Light Tower System

Specifications

Night Scan Vertical	5.4-17	6-20	7-25	8-30
Height Extended [ft. / m]	17 / 5	20 / 6	25 / 7.6	30 / 9
System Weight Range [lb. / kg]	103 / 47 – 145 / 66	108 / 49 – 150 / 68	113 / 51 – 155 / 70	118 / 54 – 160 / 73
Auto Deploy and Auto Stow®	Yes	Yes	Yes	Yes
Number of Lights Available	4, 6, 8 or 12	4, 6, 8 or 12	4, 6, 8 or 12	4, 6, 8 or 12
Light Type Available	LED	LED	LED	LED
Maximum Lumens	240000	240000	240000	240000
Full Pan and Tilt Light Positioning	Yes	Yes	Yes	Yes
Opposable Light Fixtures	Yes	Yes	Yes	Yes
VDC / Watts Maximum	12 or 24 / 1380	12 or 24 / 1380	12 or 24 / 1380	12 or 24 / 1380
VAC / Watts Maximum	120 or 240 / 9000	120 or 240 / 9000	120 or 240 / 9000	120 or 240 / 9000
Profiler - Space-Saving Fixture Option	Yes	Yes	Yes	Yes
D-TEC® Power Line Detection System Option	Yes	Yes	Yes	Yes
Beacon Light Option	Yes	Yes	Yes	Yes
Camera Option	Yes	Yes	Yes	Yes
Color Option	Standard Color White. Black Option for Additional Charge.			
*Wind Speed Survival [mph / km/h]	100+ / 161+	88+ / 141+	74+ / 119+	63+ / 101+
Operating Temperature [°F / °C]	-22 to +149 / -30 to +65			

Night Scan Vertical Internally Wired	3.3-10	4.7-10	5.7-13	4.3-15	6.7-16	5.4-17	6-20	7-25	8-30
Payload Capacity [lb. / kg]*	100	50	50	100	50	100	100	100	100
Extended Height [ft. / m]	8.4 / 2.6	10.2 / 3.1	13.3 / 4	13.4 / 4.1	16.3 / 5	17 / 5.2	20.4 / 6.2	25.4 / 7.7	30.4 / 9.3
Nested Height [ft. / m]	3.3 / 1	4.7 / 1.4	5.7 / 1.7	4.3 / 1.3	6.7 / 2	5.3 / 1.6	6 / 1.8	7 / 2.1	8 / 2.4
Approximate Mast Weight [lb / [kg]	35	27	32	45	37	50	55	60	65
Tube Diameter [in. / mm]	5-3 / 127-76	4-3 / 102-76	4-3 / 102-76	5-3 / 127-76	4-3 / 102-76	5-3 / 127-76	5-3 / 127-76	5-3 / 127-76	5-3 / 127-76
Number of Sections	5	3	3	5	3	5	5	5	5

*Varies depending on light package - 125% NFPA Safety Factor



Powerlite IQ
Fold-Down
Light Tower
with Sirion
LED Lights



Identify the exact light
position at any given time
with Smart Control System



Vertical IQ
Light Tower
with Atherion
LED Lights

NIGHT SCAN IQ INTELLIGENT LIGHT TOWER SYSTEM

You Adapt to Every Emergency Scene, Shouldn't Your Light Tower do the Same?

Night Scan IQ delivers ultimate control over your scene lighting. It can be programmed to deploy automatically to a specific direction and angle. Night Scan IQ always knows where it is directed in relation to your apparatus and displays this graphically on the 4.3" LCD screen. Flexibility is built-in with easy to change settings and real-time feedback. Night Scan IQ is Smart Illumination.



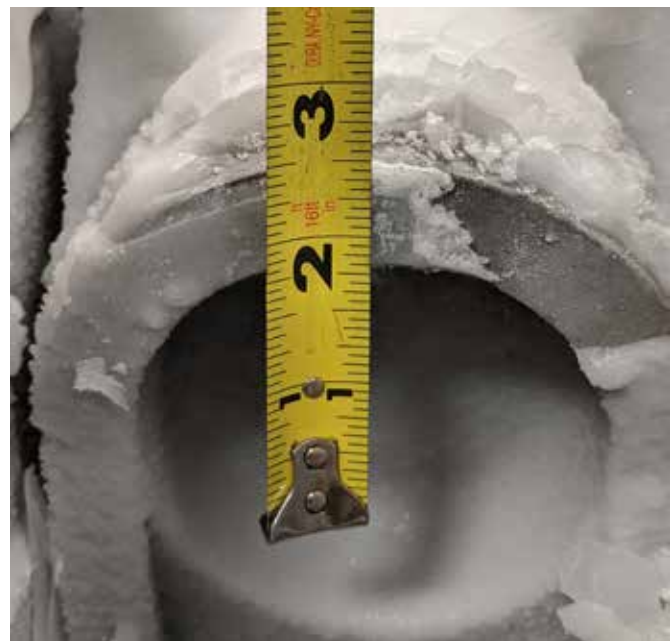
Smooth Deploy and Stow
with Smart Actuator

- Programmable positioning
- Graphical User Interface
- Simple to operate and program
- System status feedback
- Panel Mount - optional tethered controller
- Multiplex system compatible
- Available with Atherion IQ adjustable scene lights
 - 4, 6, or 8 lamps / tower
 - 30,000 lumens / lamp up to 240,000 lumens
 - Power Required - 200 watts / lamp
- 120 VAC 1.7 amps / 240 VAC .84 amps
- 12 VDC 16.7 amps / 24 VDC 8.4 amps



The Night Scan® Series of pneumatic light towers are engineered and manufactured in the USA for the harsh environments and extreme conditions, from dusty, hot deserts to -22°F, snowy conditions.

The Night Scan Powerlite IQ [shown below] was tested at -15°F / -26°C with a ¼" / 6mm of ice.



nightscan[®] by Will-Burt

Tower and LED Light Package Options



Fit



Chief

Brand	Model	Image	Light Warranty	Lumens / Lamp**	Watts	Voltage	Amps	Tower Height (ft.)						
								1.0	2.3	1.0	1.8	2.3		
								3.25	7.5	3.25	6.0	7.5		
nightscan [®]	ATHERION 10		Limited Lifetime*	30,000	200	12 / 24	16.7 / 8.4							
nightscan [®]	sirion [®]		Limited Lifetime*	110,000	600	12 / 24	50 / 25							
nightscan [®]	X 200		Limited Lifetime*	20,000	125	12 / 24	9.2 / 4.6		4	2 / 4	2 / 4	2 / 4 / 6		
	W3 480		2	72,000	480	120 / 240	4.0 / 2.0							
	W3 300		2	45,000	300	120 / 240	2.5 / 1.3							
	W3 200		2	35,000	200	120 / 240	3.6 / 1.8			2	2	2		
	W3 140		5	14,000	50	12 / 24	4.2 / 2.1	4		2 / 4	2 / 4	2 / 4 / 6		
	EVOLUTION I		Limited Lifetime*	20,000	160	12	13					2 / 4	2 / 4	
	RADIANT LUX		Limited Lifetime*	22,000	150	12 / 24	12.5 / 6.3					2	2 / 4	
	Pioneer Plus [®] Spot / Flood		Limited Lifetime*	28,380	150	12	13					2 / 4	2 / 4	
	Pioneer Plus [®] Max		Limited Lifetime*	38,160	180	120 / 240	1.5					2	2 / 4	
				20,016	150	24	6							
				18,984	225	12	18.8							
				25,128	210	24	8.8							

*See manufacturer's web site for limitations of warranty.

**Lumens per light manufacturer specifications - Multiply lumens by number of lamps for total lumens.

EMERGENCY MANAGEMENT LIGHTING, VIDEO AND ELEVATION SOLUTIONS



Chief Profiler		Powerlite					Powerlite Profiler		Vertical Complete	Vertical			
1.8	2.3	2.3	3.0	4.5	6.0	7.5	3.0	4.5	2.3	5.4	6.0	7.8	8.0
Tower Height (ft.)													
6.0	7.5	7.5	10.0	15.0	20.0	25.0	10.0	15.0	7.5	17.0	20.0	25.0	30.0
			4 / 6 / 8	4 / 6 / 8						4 / 6 / 8	4 / 6 / 8	4 / 6 / 8	4 / 6 / 8
			2	2			2	2		2	2	2	2
2 / 3	2 / 3	4	4 / 6	4 / 6	4 / 6	4	3	3	2 / 4	4 / 6	4 / 6	4 / 6	4 / 6
			2	2						2	2	2	2
			2	2						2	2	2	2
		2											
2 / 3	2 / 3								2 / 4				
	3		4	4						4	4	4	4
			4 / 6	4 / 6	2 / 4	2				4 / 6	4 / 6	4 / 6	4 / 6
2 / 3	2 / 3	4	4 / 6	4 / 6			3	3	2 / 4	4 / 6	4 / 6	4 / 6	4 / 6
			4 / 6	4 / 6	2 / 4	2				4 / 6	4 / 6	4 / 6	4 / 6

Revised: February, 2026_v1



NIGHT SCAN ATHERION® IQ ADJUSTABLE LED LIGHTS

Atherion IQ scene lights, combined with a Night Scan IQ light tower gives you 100% control of your scene illumination.

Each 30,000 lumen lamp has a combination of powerful spot and flood LEDs that you control from the LCD screen of Night Scan IQ.

Night Scan Powerlite Dual Tilt action allows you to control two banks of lights independently. The staging area can be washed with floodlighting by one bank of lights, delivering wide and consistent coverage. The second bank of lights can be directed at the work area such as a car accident where the Atherion IQ lights can be dialed to spotlight mode, providing pinpoint illumination allowing your team to perform the most demanding tasks.

Alert oncoming traffic to your presence by setting one or both banks of light to flash mode - you control the speed.

There are some situations where too much light is on the scene - this is no problem for the IQ system - you can dim the lights to the proper level for the situation.

The Night Scan IQ System gives you total control of your scene lighting!



Independent control of each light bank with Smart Control System



The Atherion IQ gives you total control of your scene lighting. Up to 240,000 lumens of LED light can be quickly shifted from spot to floodlight or anything in between, allowing your team to perform the most demanding tasks safely and efficiently.

- Variable Illumination
 - Shift from Spot to Floodlight or anything in between
- Dimmable
 - Lower the light output for the situation
- Control Two Light Banks Independently
 - Floodlight and / or Spotlight and / or Flash
- Two light banks can be controlled independently - You Decide!
 - Flood and / or spotlight and / or Flash
 - Floodlight for staging area and Spotlight for work area
- Traffic Warning
 - Variable speed flash of one bank or two
- Available on all Night Scan IQ light towers
 - 4, 6, or 8 lamps / tower
 - 30,000 lumens / lamp up to 240,000 lumens
 - Power Required / lamp 200 watts
 - 120 VAC 1.7 amps / 240 VAC .84 amps
 - 12 VDC 16.7 amps / 24 VDC 8.4 amps



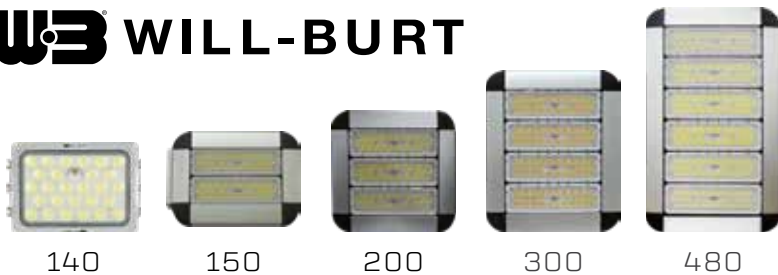


LED LAMPS

The most popular light brands are available from FRC, Night Scan, Will-Burt, and Whelen. Experience the benefits of LED scene lighting - longer life, low power consumption and rugged reliability.

The Will-Burt and Night Scan family of LED lamps are the only LED scene lights designed specifically for Night Scan light towers. These lamps are engineered to optimize the inherent benefits of Night Scan towers, producing more light, using less power, and covering larger areas. Reliable in extreme environments, the Will-Burt and Night Scan family of LED lamps deliver maximum lighting performance and will always create light throughout the mission.

W3 WILL-BURT



All models available in standard color white. Black option for additional charge



FRC



RADIANT LUX

EVOLUTION II

WHELEN



Pioneer Plus[™]
Spot / Flood

Pioneer Plus[™]
Max

Specifications

Model	Nightscan			Will-Burt				
	Atherion	Sirion	X200	WB480	WB300	WB200	WB150	WB140
Raw Lumens Per Fixture	30,000	110,000	20,000	72,000	45,000	35,000	22,500	14,000
Maximum Tower Lumens	240,000	220,000	120,000	144,000	90,000	70,000	45,000	84,000
Optics	Spot / Flood	Spot / Flood	Spot / Flood	Spot / Flood	Spot / Flood	Spot / Flood	Spot / Flood	Spot / Flood
Waterproof Rating	IP68	IP69K	IP69K	IP67	IP67	IP67	IP67	IP69K

All models are equipped with active thermal management.



LIGHT TOWER ACCESSORIES

Will-Burt offers a variety of essential accessories to enhance the safety and efficiency of your crew; including beacon lights to increase visibility and mobile video systems for real-time monitoring and surveillance. Additionally, full-function remote controllers are designed for gloved hands in hazardous environments, ensuring rapid response during emergencies.

BEACON LIGHTS

Will-Burt lighting solutions include reliable, compact beacon lights for added visibility and safety. Beacon lights feature a rugged, impact-resistant polycarbonate dome and base, exceptional fiber optics, and a double-flash power supply that automatically adjusts to function at any voltage - from 12V to 24V DC. They meet SAE J1318 Class 3 specifications and are available in LED beacons and a variety of colors: amber, blue, clear, red and green.



REMOTE CONTROLLERS

Will-Burt offers wired and wireless full-function, simple-to-use remote controls. Designed for rugged environments and gloved hands, they can withstand the harshest weather and operating conditions.

All controllers have an emergency stop button for immediate reaction to unexpected situations. All controllers have a one button auto-deploy and auto-stow function to simplify tower operation and they also include a digital display for status feedback.

Choose from handheld tethered models or a panel-mount version. The latest Night Scan IQ Smart Control System identifies the exact light position at any time. Or, select a full-function, wireless / rechargeable remote-control system with 300' range is available for all Night Scan models. The wireless remote can also be paired with an optional tethered remote control for the ultimate in flexibility and peace of mind operation.



Wired Controllers			Wireless Controller	Panel Mount Controllers		
						
Chief and Vertical Complete	Powerlite, Xtreme and Vertical	Optional IQ Handheld Controller (Must be used with IQ Panel Mount Controller)	All Night Scan Models	Chief and Vertical Complete	Powerlite, Xtreme and Vertical	IQ Panel Mount Smart Control System

D-TEC® LIVE POWER LINE DETECTION SYSTEM

The D-TEC® safety system provides overhead power line detection and above-the-mast illumination. The built-in high voltage, electromagnetic and electrostatic field detection system automatically stops mast extension, providing added protection for the operator and equipment. The D-TEC® safety system is available on powerlite and vertical telescoping masts.

- LED Look-Up Light
- Audible alerts
- Alphanumeric LED display
- Built-in Emergency Bypass
- Expanded self-testing features
- Factory pre-set siren and verbal warning in English and Spanish



Detection Frequency Range	47Hz – 70 Hz
Detection	Electromagnetic & electrostatic field detection
Look-up Light	LED Look-up Light
Power Requirements	12 VDC 10 Amps / 24 VDC 5 Amps
Interconnecting Cable	2 twisted pair shielded [sensor to control unit]
Environmental Conditions	Sensor IP67, Control IP65
Operating Temperature [°F / °C]	-40 to 160 / -40 to +71
Display Options [L x W x H] [in. / mm]	8.661 x 4.784 x 4.173 / 220 x 121.5 x 106
Sensor Housing [L x W x H] [in. / mm]	5 x 3.6 x 5.6 / 127 x 92 x 141
Rack Mount [L x W x H] [in. / mm]	19 x 6.089 x 1.75 / 483 x 154.7 x 44.5





STANDARD-DUTY & HEAVY-DUTY, NON-LOCKING PNEUMATIC TELESCOPING MASTS

Extended Heights up to 30 ft. | Up to 240,000 Lumens

The Will-Burt Pneumatic Standard-Duty Non-Locking (SDNL) and Heavy-Duty Non-Locking (HDNL) Masts offer a light-weight solution with a high payload lifting capacity. Our Pneumatic Non-Locking Masts also feature high pointing accuracy and long mast life for high performance and dependability. The pneumatic heavy-duty design makes it inherently safe. What's more, the Pneumatic Non-Locking Masts have controlled exhausting of air for smooth and safe retraction. Locking models are available for extended deployments.

- Maintains Azimuth - minimal twist deflection
 - Reliable full-length external keyways
- Reliable Operation
 - Anodized aluminum with synthetic bearings
- No Maintenance Required
 - Under normal operating conditions
 - 5 year manufacturer warranty



Specifications

Standard Duty Non-Locking Masts	5-20	6-27	7-34	8-30
Extended Height [ft. / m]	20 / 6.1	27 / 8.2	33.8 / 10.3	29.8 / 9.1
Nested Height [ft. / m]	5.3 / 1.6	6 / 1.8	7 / 2.1	8 / 2.4
Payload Capacity [lb / kg]*	70 / 32	40 / 18	40 / 18	100 / 45
Approximate Mast Weight [lb / kg]	45 / 21	54 / 25	67 / 31	64 / 29
Number of Sections	6	7	7	5
Tube Diameter [in. / cm]	5.00 - 2.50 / 127 - 64	5.00 - 2.00 / 127-51	5.00 - 2.00 / 127 - 51	5.00 - 3.00 / 127 - 76
Collar Type	20 PSIG [1.4 bar]	20 PSIG [1.4 bar]	20 PSIG [1.4 bar]	20 PSIG [1.4 bar]
Maximum Operating Pressure	35 psig [2.4 bar]	35 psig [2.4 bar]	35 psig [2.4 bar]	35 psig [2.4 bar]

Heavy-Duty	6-25	7-30	7-42	8.5-48	8.5-52	9.5-56	9-58
Extended Height [ft. / m]	25.0 / 7.6	29.2 / 8.9	41.0 / 12.5	48.0 / 14.6	52.0 / 15.8	56.0 / 17.0	58 / 17.7
Nested Height [ft. / m]	5.8 / 1.8	6.7 / 2.0	6.8 / 2.1	8.5 / 2.6	8.3 / 2.5	9.5 / 2.9	8.8 / 2.7
Payload Capacity [lb / kg]*	200 / 91	200 / 91	200 / 91	300 / 136	200 / 91	300 / 136	200 / 91
Approximate Mast Weight [lb / kg]	110 / 50	125 / 57	235 / 107	275 / 125	266 / 121	296 / 135	290 / 132
Number Sections	6	6	9	8	9	8	9
Tube Diameter [in. / cm]	6.75-3.00 / 171-76	6.75-3.00 / 171-76	9.00-3.00 / 229-76	9.00-3.75 / 229-95	9.00-3.00 / 229-76	9.00-3.00 / 229-76	9.00-3.00 / 229-76
Collar Type	Non-Locking	Non-Locking	Non-Locking	Non-Locking	Non-Locking	Non-Locking	Non-Locking
Maximum Operating Pressure	35 PSIG [2.4 bar]	35 PSIG [2.4 bar]	35 PSIG [2.4 bar]	35 PSIG [2.4 bar]	35 PSIG [2.4 bar]	35 PSIG [2.4 bar]	35 PSIG [2.4 bar]

*Capacity will be affected by wind sail area. Consult factory.





LOW-PROFILE NON-LOCKING PNEUMATIC TELESCOPING MASTS

Extended Heights up to 50 ft. | Payload Capacity up to 300 lb

Internal collars deliver lower nested height.

Today's ENG vehicles such as the Ford Transit and Nissan NV, require a high performance telescopic mast with a lower nested height in order to meet highway height restrictions.

Will-Burt's Low-Profile mast with innovative internal collar design optimizes the nested to extended height ratio for a shorter retracted mast. Each collar is stored inside the next rather than stacking the collars one on top of the other - minimizing the stowed mast height.

An integrated locking payload top plate stabilizes the payload when stowed and in transit. Lastly, Will-Burt's mast design reduces extended mast twist for the best possible video feed.

- Low-Nested Height
 - Internal collar design minimizes height of stowed mast
 - Design optimized for new, smaller ENG vehicles
- Precise and Stable
 - Design minimizes mast twist when extended
 - Integrated locking payload top plate stabilizes payload when in transit
- No Maintenance Required
 - No routine maintenance required under normal operating conditions
 - 5 year manufacturer warranty





Low Profile	7-27	6-29	5.3-32	7-42	6-42	7.3-50
Extended Height [ft. / m]	26.7 / 8.2	28.4 / 8.7	32 / 9.75	41.2 / 12.5	41.2 / 12.5	50 / 15.3
Nested Height [ft. / m]	6.5 / 2.0	6.0 / 1.8	5.3 / 1.7	6.8 / 2.1	6.3 / 1.9	7.3 / 2.3
Payload Capacity [lb / kg]*	300 / 136	200 / 91	200 / 91	300 / 136	200 / 91	200 / 91
Approx. Mast Weight [lb / kg]	118 / 53	119 / 54	197 / 90	230 / 104	223 / 101	257 / 117
Number of Sections	5	6	8	8	9	9
Tube Diameter [in. / cm]	6.75-3.75 / 17.15-9.53	6.75-3.00 / 7.15-7.62	9.00-3.00 / 22.86-7.62	9.00-3.75 / 22.86-9.53	9.00-3.00 / 22.86-7.62	9.00-3.00 / 22.86-7.62
Collar Type	Internal, Non-Locking	Internal, Non-Locking	Internal, Non-Locking	Internal, Non-Locking	Internal, Non-Locking	Internal, Non-Locking
Max. Operating Pressure	35 PSIG [2.4 bar]	35 PSIG [2.4 bar]	35 PSIG [2.4 bar]	35 PSIG [2.4 bar]	35 PSIG [2.4 bar]	35 PSIG [2.4 bar]

*Capacity will be affected by wind sail area. Consult factory. | **Internally wired versions available



INFLEXION™ ROOF-MOUNTED TELESCOPING MAST

Extended Heights up to 24 ft. | Payload Capacity up to 100 lb

The Will-Burt Company has partnered with the industry leaders in broadcast vehicle integration for over 30 years. This has allowed Will-Burt to identify advances and changes in broadcast technology early and design elevation solutions to optimize that technology.

Inflexion™ was designed to meet the elevation requirements of smaller, advanced broadcast devices. The roof-mounted, self-contained Inflexion™ can easily be integrated onto nearly any vehicle, from traditional broadcast vans to small, front-wheel drive vehicles. This allows you to take full advantage of fuel and vehicle cost savings.

STANDARD FEATURES

- Compact, roof-mount design
 - No interior space needed
- Self-contained elevation system
 - No compressor or generator required
- Years of reliable service
 - Field proven design with over 25 years of service - 2 year manufacturer warranty
- High payload capacity and height options
 - From 5 ft. / 1.0m to 24 ft. / 7.3m

- Accommodates a variety of payloads
 - Antennas, satellite dish, radar, lighting and cameras
- 12 VDC operation
- Color
 - White
- Analog Handheld controller
 - Includes mast up/down function

OPTIONAL FEATURES

- PositionIt
 - Integrated pan and tilt positioner
- InflexionPlus
 - Accommodates full function handheld controller (sold separately)
- Color
 - Black
- Internal wiring or Nycoil
 - Consult factory for specific application
- 24 VDC operation

Specifications

Inflexion Models	1.0	1.8	2.3	3.0	4.5	6.0	7.5
Extended Height [ft. / m]	3.16 / 0.96	5.3 / 1.62	6.6 / 2.0	9.0 / 2.7	14.0 / 4.2	19.0 / 5.8	24.0 / 7.3
Stowed Dimensions [Approximate] [L x W x H (ft. / m)]	3.45 x 1.27 x 0.81 / 1.05 x 0.38 x 0.26	3.08 x 1.27 x 0.8 / 0.94 x 0.39 x 0.24	3.6 x 1.3 x 0.92 / 1.1 x 0.4 x 0.28	4.8 x 1.3 x 1.0 / 1.5 x 0.4 x 0.3	5.8 x 1.3 x 1.0 / 1.8 x 0.4 x 0.3	6.8 x 1.3 x 1.0 / 2.07 x 0.4 x 0.3	8.0 x 1.3 x 1.0 / 2.44 x 0.4 x 0.3
Maximum Payload Capacity* [lb / kg]	50 / 23	53 / 24	46 / 21	100 / 45	84 / 38	60 / 27	50 / 23
System Weight Range [lb / kg]	60 / 27	63 / 29	66 / 30	105 / 47	113 / 51	124 / 56	142 / 65
Operating Temperature Range [°F / °C]	-22 to 149 / -30 to 65	-22 to 149 / -30 to 65	-22 to 149 / -30 to 65	-22 to 149 / -30 to 65	-22 to 149 / -30 to 65	-22 to 149 / -30 to 65	-22 to 149 / -30 to 65

*The added weight of a positioner or D-TEC II will reduce maximum payload capacity. Capacity will be affected by wind sail area. Consult factory.



GEROH **KVK**

GEROH KVK (NON-LOCKING) & KVR (LOCKING) TELESCOPING CABLE DRIVE MASTS

Extended Heights up to 45 ft. | Payload Capacity up to 132 lb

The GEROH KVR and KVK Telescoping Cable Drive Masts offer a lightweight yet robust mobile elevation solution, ensuring superior stability, reliability, and longevity. These telescopic mast systems, available in both non-locking (KVK) and locking (KVR) variants, are ideal for telecommunications applications, including communications, testing, surveillance, and lighting. Designed for deployment on vehicles, trailers, and shelters, they feature precision-engineered mast profiles for accurate positioning.

Equipped with two strong internal cables, powered by either a manual winch or an electric motor, these masts are protected from environmental elements. They can operate seamlessly in extreme temperatures ranging from $-25^{\circ}\text{F} / -32^{\circ}\text{C}$ to $+111^{\circ}\text{F} / +44^{\circ}\text{C}$, ensuring reliable performance even in harsh conditions.

- Deploy to any height
- KVR has automatic internal sectional locks which engage when section is fully deployed
 - Long-term deployment and guy line capable
- Precision machined sections and collars
 - Maintain accurate pointing
- Powerful dual internal cable drive system
 - Powered deployment and retraction in extreme environments
- Available as manual crank, analog motor, or digital motor
- Designed for trailer, shelter, or vehicle deployment
- MIL-STD 810 - F / G qualified



Specifications

KVK (Non-locking)	120 - 2.5 KVK 3	120 - 4 KVK 4	145 - 6 KVK 4	145 - 8 KVK 5	170 - 10 KVK 5	170 - 12 KVK 6
Extended Height [ft. / m]	8.2 / 2.5	13.1 / 4	19.7 / 6	26.2 / 8	32.8 / 10	39.3 / 12
Nested Height [ft. / m]	3.5 / 1.14	4.3 / 1.34	6.3 / 1.9	6.9 / 2.1	8.2 / 2.5	8.2 / 2.5
Payload Capacity [lb / kg]	132 / 60	99 / 45	132 / 60	99 / 45	110 / 50	88 / 40
Approximate Mast Weight [lb / kg]	62 / 28	78 / 35	122 / 55	139 / 63	183 / 83	194 / 88
Number of Sections	3	4	4	5	5	6
KVR (Locking)	145 - 6 KVR 5	145 - 8 KVR 5	145 - 10 KVR 5	145 - 12 KVR 5	170 - 8 KVR 5	170 - 10 KVR 5
Extended Height [ft. / m]	20 / 6	26 / 8	32 / 10	39 / 12	26 / 8	32 / 10
Nested Height [ft. / m]	5.9 / 1.8	7.2 / 2.2	8.5 / 2.6	9.9 / 3.0	7.2 / 2.2	8.5 / 2.6
Payload Capacity [lb / kg]	110 / 50	110 / 50	99 / 45	88 / 40	110 / 50	110 / 50
Approximate Mast Weight [lb / kg]	133 / 60	148 / 67	163 / 74	176 / 80	181 / 82	201 / 91
Number of Sections	5	5	5	5	5	5
KVR (Locking)	170 - 12 KVR 5	170 - 14 KVR 5	170 - 8 KVR 6	170 - 10 KVR 6	170 - 12 KVR 6	170 - 14 KVR 6
Extended Height [ft. / m]	39 / 12	45 / 14	26 / 8	32 / 10	39 / 12	45 / 14
Nested Height [ft. / m]	9.9 / 3.0	11.2 / 3.4	6.6 / 2.0	7.6 / 2.3	8.9 / 2.7	9.9 / 3.0
Payload Capacity [lb / kg]	99 / 45	88 / 40	110 / 50	99 / 45	88 / 40	88 / 40
Approximate Mast Weight [lb / kg]	220 / 100	240 / 109	176 / 80	194 / 88	212 / 96	229 / 104
Number of Sections	5	5	6	6	6	6

Additional sizes available. Specifications are for reference only and are subject to change. Please contact Will-Burt for current and exact specifications. In addition to its masts, Will-Burt Germany also engineers and manufactures its own line of specialty single and double-axle military trailers, designed for maximum mobility with high payload capability and low curb weight.





Center Collar Breach Load



EZ Raze™ System



Mast Tube Lift Winch

ANTENNAMAST MODEL AM2

Extended Heights up to 49.2 ft. | Payload Capacity up to 100 lb

See
willburt.com
for complete
model range and
accessories

The AntennaMast model AM2 is a rugged, lightweight, man-portable, aluminum tripod mast designed for rapid payload deployment. The AM2 is extremely flexible and reliable and is capable of elevating multiple devices on a single mast.

The AntennaMast Model AM2 is available with three different payload deployment options. The EZ Raze™ system with cable winching device and safety brake enables the user to lift and lower heavier payloads in a safe and controlled manner without disassembling the mast system.

The mast tube lift winch provides a mechanical assist for the lifting of the mast tubes for heavier payloads.

The user is also able to elevate the mast tubes and payload by breach loading the tubes through the tripod center collar.

- Rapid set-up
 - Includes a tripod with two (2) built-in levels and large no-slip adjustment knobs that are easy to operate. Interlocking mast tubes allow for directional adjustment of the payload
- Flexible
 - A variety of payload adaptors and accessories are available to accomplish diverse missions
- Simple
 - No tools or special training are needed for deployment
- Rugged
 - Designed to meet MIL-STD-810 for use in a variety of harsh environments
- Durable
 - Components are constructed of aluminum and stainless steel and are covered by a two (2) year warranty
- Complete system
 - AM2 system includes all components needed to safely deploy rated payload at selected height
- Transportable
 - Every mast system comes with a rugged wheeled transport bag designed for easy unloading and loading
- A full range of interchangeable accessories and payload adaptors are available for the AntennaMast

Specifications

Height [m / ft.]	Model #	Deployable Load [lb / kg]	Deployment Method	Deployment Time	System Weight [lb / kg]	Guying [Primary / Secondary]	Wind Survival Speed [mph / km/h]
AM2 Standard Deployment							
49.2 / 15	715061500	20 / 9.1	Manual	20-30 [2-4 persons]	103.6 / 47	Top / Mid Guying Optional	70 / 113 @ 4 sq. ft.
45.9 / 14	715061400	25 / 11.3	Manual	15-20 [1-3 persons]	100.5 / 45.6	Top / Mid Guying Optional	70 / 113 @ 4 sq. ft.
42.7 / 13	715061300	30 / 13.6	Manual	15-20 [1-3 persons]	97 / 44	Top / Mid Guying Optional	70 / 113 @ 4 sq. ft.
39.4 / 12	715061200	35 / 15.9	Manual	15-20 [1-3 persons]	93.8 / 42.5	Top / Mid Guying Optional	70 / 113 @ 4 sq. ft.
36.1 / 11	715061100	40 / 18.1	Manual	15-20 [1-3 persons]	90.5 / 41.1	Top / Mid Guying Optional	70 / 113 @ 4 sq. ft.
32.8 / 10	715061000	50 / 22.7	Manual	15-18 [1-3 persons]	87.3 / 39.6	Top / Mid Guying Optional	70 / 113 @ 6 sq. ft.
29.5 / 9	715060900	55 / 24.9	Manual	15-18 [1-3 persons]	84 / 38.1	Top	70 / 113 @ 6 sq. ft.
26.2 / 8	715060800	55 / 24.9	Manual	15-18 [1-3 persons]	80.8 / 36.7	Top	70 / 113 @ 6 sq. ft.
23 / 7	715060700	60 / 27.2	Manual	10-18 [1-2 persons]	77.6 / 35.2	Top	70 / 113 @ 6 sq. ft.
19.7 / 6	715060600	60 / 27.2	Manual	10-18 [1-2 persons]	74.3 / 33.7	Top	70 / 113 @ 6 sq. ft.
16.4 / 5	715060500	65 / 29.5	Manual	5-10 [1-2 persons]	71 / 32.2	Top	70 / 113 @ 6 sq. ft.
13.1 / 4	715060400	70 / 34	Manual	5-10 [1-2 persons]	67.8 / 30.8	Top	70 / 113 @ 6 sq. ft.
9.8 / 3	715060300	85 / 38.6	Manual	5-10 [1-2 persons]	64.6 / 29.3	Top	70 / 113 @ 6 sq. ft.
6.6 / 2	715060200	100 / 45.4	Manual	5-10 [1-2 persons]	61.3 / 27.8	Top	70 / 113 @ 6 sq. ft.

AM2 with Mast Tube Lift Winch							
49.2 / 15	715071500	20 / 9.1	Lift Winch	20-30 [2-4 persons]	110.6 / 50.2	Top / Mid Guying Optional	70 / 113 @ 4 sq. ft.
45.9 / 14	715071400	25 / 11.3	Lift Winch	15-20 [1-3 persons]	107.5 / 48.8	Top / Mid Guying Optional	70 / 113 @ 4 sq. ft.
42.7 / 13	715071300	30 / 13.6	Lift Winch	15-20 [1-3 persons]	104.5 / 47.4	Top / Mid Guying Optional	70 / 113 @ 4 sq. ft.
39.4 / 12	715071200	35 / 15.9	Lift Winch	15-20 [1-3 persons]	100.8 / 45.7	Top / Mid Guying Optional	70 / 113 @ 4 sq. ft.
36.1 / 11	715071100	40 / 18.1	Lift Winch	15-20 [1-3 persons]	97.5 / 44.2	Top / Mid Guying Optional	70 / 113 @ 4 sq. ft.
32.8 / 10	715071000	50 / 22.7	Lift Winch	15-18 [1-3 persons]	94.3 / 42.8	Top / Mid Guying Optional	70 / 113 @ 6 sq. ft.
29.5 / 9	715070900	55 / 24.9	Lift Winch	15-18 [1-3 persons]	91 / 41.3	Top	70 / 113 @ 6 sq. ft.
26.2 / 8	715070800	55 / 24.9	Lift Winch	15-18 [1-3 persons]	87.8 / 39.8	Top	70 / 113 @ 6 sq. ft.
23 / 7	715070700	60 / 27.2	Lift Winch	10-18 [1-2 persons]	84.6 / 38.4	Top	70 / 113 @ 6 sq. ft.
19.7 / 6	715070600	60 / 27.2	Lift Winch	10-18 [1-2 persons]	81.3 / 36.9	Top	70 / 113 @ 6 sq. ft.
16.4 / 5	715070500	65 / 29.5	Lift Winch	5-10 [1-2 persons]	78 / 35.4	Top	70 / 113 @ 6 sq. ft.
13.1 / 4	715070400	70 / 34	Lift Winch	5-10 [1-2 persons]	74.8 / 33.9	Top	70 / 113 @ 6 sq. ft.
9.8 / 3	715070300	85 / 38.6	Lift Winch	5-10 [1-2 persons]	71.6 / 32.5	Top	70 / 113 @ 6 sq. ft.
6.6 / 2	715070200	100 / 45.4	Lift Winch	5-10 [1-2 persons]	68.3 / 31	Top	70 / 113 @ 6 sq. ft.

AM2 with EZ Raze Payload Elevation System							
49.2 / 15	715071500	20 / 9.1	Lift Winch	20-30 [2-4 persons]	110.6 / 50.2	Top / Mid Guying Optional	70 / 113 @ 4 sq. ft.
45.9 / 14	715071400	25 / 11.3	Lift Winch	15-20 [1-3 persons]	107.5 / 48.8	Top / Mid Guying Optional	70 / 113 @ 4 sq. ft.
42.7 / 13	715071300	30 / 13.6	Lift Winch	15-20 [1-3 persons]	104.5 / 47.4	Top / Mid Guying Optional	70 / 113 @ 4 sq. ft.
39.4 / 12	715071200	35 / 15.9	Lift Winch	15-20 [1-3 persons]	100.8 / 45.7	Top / Mid Guying Optional	70 / 113 @ 4 sq. ft.
36.1 / 11	715071100	40 / 18.1	Lift Winch	15-20 [1-3 persons]	97.5 / 44.2	Top / Mid Guying Optional	70 / 113 @ 4 sq. ft.
32.8 / 10	715071000	50 / 22.7	Lift Winch	15-18 [1-3 persons]	94.3 / 42.8	Top / Mid Guying Optional	70 / 113 @ 6 sq. ft.
29.5 / 9	715070900	55 / 24.9	Lift Winch	15-18 [1-3 persons]	91 / 41.3	Top	70 / 113 @ 6 sq. ft.
26.2 / 8	715070800	55 / 24.9	Lift Winch	15-18 [1-3 persons]	87.8 / 39.8	Top	70 / 113 @ 6 sq. ft.
23 / 7	715070700	60 / 27.2	Lift Winch	10-18 [1-2 persons]	84.6 / 38.4	Top	70 / 113 @ 6 sq. ft.
19.7 / 6	715070600	60 / 27.2	Lift Winch	10-18 [1-2 persons]	81.3 / 36.9	Top	70 / 113 @ 6 sq. ft.
16.4 / 5	715070500	65 / 29.5	Lift Winch	5-10 [1-2 persons]	78 / 35.4	Top	70 / 113 @ 6 sq. ft.
13.1 / 4	715070400	70 / 34	Lift Winch	5-10 [1-2 persons]	74.8 / 33.9	Top	70 / 113 @ 6 sq. ft.
9.8 / 3	715070300	85 / 38.6	Lift Winch	5-10 [1-2 persons]	71.6 / 32.5	Top	70 / 113 @ 6 sq. ft.
6.6 / 2	715070200	100 / 45.4	Lift Winch	5-10 [1-2 persons]	68.3 / 31	Top	70 / 113 @ 6 sq. ft.



CLARK SERIES QT PNEUMATIC MASTS

Extended Heights up to 49.2 ft. | Payload Capacity up to 49.6 lb

The QT Range of lightweight telescopic pneumatic masts are designed to be portable and erected quickly where they are required. Available in a wide range of heights from 3m to 15m and in a range of sizes to suit varying payloads. It is a highly versatile system capable of being field mounted using a folding tripod stand. Equally at home when mounted to a vehicle or shelter, the QT Range is designed to be versatile. Made from high strength 16 swg aluminum tube, to save weight, the QT Range is non-keyed, allowing for easy payload pointing and each section is fitted with a locking collar. Payloads are quickly attached using the quick clamp 24mm socket with a variety of available payload adapters.

Technical Specifications

- Heights 13.1 ft [4m] to 49.2 ft [15m]
- Payloads up to 49.6 lb [22.5 kg]
- Aluminum alloy sections
- Handpump
- Mounting Studs M8
- Water drain plug
- Air release screw
- Section locks
- Guy collar
- Quick clamp [24mm] for payloads
- Field / Vehicle / Shelter Deployment
- Wide variety of accessories available
- Dry operating temperatures
 - -40°F to 131°F [-40°C to 55°C]





CLARK QT SERIES MK VI TRIPOD

Suitable for Non-rotatable Masts up to 49.2 ft.

All MK VI tripods can either be stored vertically or horizontally and suitable for non-rotatable masts up to 15 meters. Additionally, a tripod mounting bracket is available for all QT models, allowing the mast to be fixed onto a wall, vehicle, or shelter. A ground, vehicle, or shelter tripod is equipped with a locking block which enables the user to attach this tripod to the tripod mounting bracket for compact vertical storage, with or without the mast.



Tripod Mounting Bracket



Tripod Mounting Bracket with Tripod Stand Mounted



Tripod Mounting Bracket with Tripod Stand and Mast Mounted

Specifications

Clark QT Series	3.5-13	5-20	6-26	7-33	9-40	9-49
Extended Height [ft. / m]	13.1 / 4.0	20.0 / 6.10	26.1 / 7.95	33.3 / 10.15	40.0 / 12.20	49.2 / 15.0
Nested Height [ft. / m]	3.5 / 1.05	4.9 / 1.50	5.9 / 1.80	7.2 / 2.20	8.7 / 2.65	9.2 / 2.80
Payload Capacity [lb. / kg]	44 / 20	44 / 20	44 / 20	40 / 18	33 / 15	22 / 10
Approximate Mast Weight [lb. / kg]	18.8 / 8.5	23.9 / 10.8	29.2 / 13.2	33.1 / 15.0	39.7 / 18.0	46.3 / 21.0
Number of Sections	6	6	6	6	6	6
Tube Diameter [in. / mm]	3.5 / 88.9	3.5 / 88.9	3.5 / 88.9	3.5 / 88.9	3.5 / 88.9	3.5 / 88.9
Collar Type	Non-Rotatable	Non-Rotatable	Non-Rotatable	Non-Rotatable	Non-Rotatable	Non-Rotatable
Time to Extend [seconds]	15	30	40	50	60	70
Time to Retract [seconds]	10	20	30	40	45	60
Finish	Natural Anodized	Natural Anodized	Natural Anodized	Natural Anodized	Natural Anodized	Natural Anodized

Clark MK VI Tripod	CM-36585	CM-36586	CM-36587	CM-36588	CM-36589	CM-36590
Extended Height [ft. / m]	13.1 / 4.0	20.0 / 6.1	26.0 / 7.9	33.3 / 10.1	40.0 / 12.2	49.2 / 15.0
Weight [lb / kg]	25.2 / 11.4	28.0 / 12.7	30.9 / 14.0	34.0 / 15.4	36.9 / 16.7	40.0 / 18.0



Accessories



Mast Wall Mounting Bracket
 For permanent fixture of the mast, used in pairs.



Wheel Mounting Bracket
 For temporary fixture of a mast using the weight of a vehicle. | CM-33770



Mast Mounting Ring
 For permanent fixture of the mast, used in combination with the mast mounting studs. Used in pairs.



2" Hitch Mount Assembly
 Use 2" vehicle receiver hitch to mount and deploy the mast - all hardware included. Used in pairs. 6022901-PA09



Saddle Clamp
 For non-permanent fixture of the mast, making the mast instantly removable. Used in pairs.



Mounting Post
 Can be mounted on suitable level surface to deploy the mast - mast mounting hardware included. 6023101-PA09



Roof Bearing
 All roof bearings are foreseen with rubber seals to avoid water infiltration.



Canvas Cover
 Light-grey canvas cover for mast head protection against dust, rain and snow. CM-36388-SG



Base Mounting Bracket
 Used in combination with a roof bearing.



Guying Kit
 1 Level Guy [Up to 33 ft. / 10m]
 2 Level Guy [33 ft. / 10m and above]
 CM-29324-SG



Handpump Canvas Cover
 Canvas cover for handpump protection, against dust, rain and snow. CM-50472-SG



HURRY-UP PORTABLE PUSH UP TELESCOPING MAST

Extended Heights up to 30 ft. | Payload Capacity up to 20 lb

The Hurry-Up manual push-up mast, can be extended to a full height of 30 feet (9 m) in one minute or less. The Hurry-Up mast features quick lock/release collars. Extend the mast manually by pushing up the sections and fixing them in position. This mast is ideal for fast deployment of light-weight antennas and instruments.

- Rigid azimuth locking collars
 - Quick direction adjustments
- Black anodized finish
 - Corrosion resistant
- Simple design and operation
 - Manual push-up deployment, retraction, and locking of mast
 - Positional feedback

ACCESSORIES

[Mounting option required]:

- Drive-on plate mounting
 - No guylines required
- Removable payload extension stub
 - Easy payload mounting
- External support brackets
 - Permanent vehicle mounting
- Hitch Mount
 - 2" Hitch - Removable



Hurry-Up Models	3-7	5-17	6-25	6.6-30
Extended Height [ft. / m]	6.8 / 2.1	17.3 / 5.3	24.9 / 7.6	29.5 / 9.0
Nested Height [ft. / m]	3.0 / 1.0	5.3 / 1.6	5.9 / 1.8	6.6 / 2.0
Payload Capacity [lb / kg]	20 / 9	20 / 9	20 / 9	20 / 9
Approximate Weight [lb / kg]	15 / 7	19 / 9	29 / 13	36 / 16
Number of Sections	3	4	6	6
Tube Diameter [in. / mm]	3.50-2.625 / 89-67	3.50-2.25 / 89-57	3.50-1.50 / 89-38	3.50-1.50 / 89-38
Collar Type	Friction Locking	Friction Locking	Friction Locking	Friction Locking
Finish	Black Anodize, MIL-A-8625, Type II, Class 2	Black Anodize, MIL-A-8625, Type II, Class 2	Black Anodize, MIL-A-8625, Type II, Class 2	Black Anodize, MIL-A-8625, Type II, Class 2

DEPLOYMENT OPTIONS



Hitch Mount
2" Removable Hitch



Drive-On Plate
No Guylines Required



External Mount
Shelf and Support Brackets

VIDEO CAMERAS



INFINITI TRITON HD IP POE PTZ CAMERA PLUS IR ILLUMINATOR

RUGGED PTZ CAMERA WITH HD VIDEO

Infrared Illuminator: 50 Meters

The Infiniti Triton's LED arrays provide up to 50m of IR illumination ensuring 24/7 day night imaging even in complete darkness.



INFINITI TRITON HD IP PTZ CAMERA PLUS THERMAL IMAGER

RUGGED PTZ CAMERA WITH DUAL HD VIDEO AND THERMAL MODULES

The Infiniti Triton HD IP PTZ Camera Plus Thermal Imager utilizes the very latest in both thermal core and lens technology, providing advanced surveillance capabilities in a rugged aluminum weather ready enclosure.

The continuous rotation dual sensor PTZ camera uses an uncooled Vanadium Oxide [VOx] Thermal Core, delivers 384 x 288 pixel resolution.

The PTZ is well suited for mid-range surveillance applications and supports simultaneous video verification provided by a 30x HD IP zoom module.



HD Video Camera		
	Triton HD IP POE w/ IR Illuminator	Triton HD IP + Thermal Imager
Camera Type	PTZ IP POE w/ IR Illuminator - 50m	PTZ IP w/ Thermal Imager
Lens	4.8mm to 144.0mm	
Image Sensor	2.4MP 1/2.8" CMOS	
Resolution	2MP/1080p @ 30fps [1920 x 1080]	
Optical Zoom / Digital Zoom	30X Optical Zoom + 16X Digital	
Low Light	Color: 0.005 Lux @ f/1.5 B&W: 0.0005 Lux @ f/1.5	
Compression	H.265/H.264/MJPEG	
Protocol	ONVIF, HTTP, RTSP, RTP, TCP, UDP	
Pan Angle & Speed	360° Continuous, up to 80° / sec	
Tilt Angle & Speed	-25° to + 90°, up to 60° / sec	
Ingress Protection	IP66	
Image Stabilization	Electronic Image Stabilization [EIS]	
NDAA Compliant	Yes	
Camera Warranty	1 Year	

Thermal Imager	
Triton HD IP + Thermal Imager	
Image Sensor	Uncooled VOx Microbolometer
Pixel Pitch	12µm
Lens	19mm f/1.0
Spectral Range	7,000-14,000nm [LWIR]
Thermal Sensitivity	50mK
Resolution	384 x 288
Field of View	13.8° Horizontal FOV
Frequency	30Hz
Image Display	White Hot
Focus	Athermalized

VIDEO CAMERAS



WONWOO IP PTZ WITH IR SURVEILLANCE AND SCENE MONITORING WITH INFRARED FEATURE

WONWOO

Ideal For Use in Harsh Environments

The weatherproof IP IR PTZ camera with pan/tilt mechanism is ideal for use in harsh environments. It incorporates a powerful 20x optical zoom lens, allowing for a zoom capacity of up to 240x when used in combination with its 12X digital zoom. The integrated Advanced BLC technology is used to improve the cameras dynamic range by 128 times, resulting in high definition image reproduction during extreme high contrast environments. HD-SDI or IP video options.

Camera Type	PTZ - IP with Infrared Illuminator
Lens	4.7mm - 94.0mm
Image Sensor	1/3" 2.2M Pixel CMOS Sensor
Resolution	1920 x 1080 pixels - 1080p
Optical Zoom / Digital Zoom	20x / 12x
Low Light	0.0005 LUX with 12 IR LED's / 120m
Pan & Tilt	360° endless pan / 15° - 270° tilt
Ingress Protection	IP66 - Outdoors
Camera Warranty	1 years

VIPER HD IP POE PTZ CAMERA THE RICHEST VIEWING EXPERIENCE POSSIBLE

IP H.265 Video Encoding

The Viper High Definition Pan/Tilt/Zoom Camera provides high resolution broadcast video with a notably sharper, crisper and clearer picture. Features that include Hydrophilic "self cleaning" glass window, Wide Dynamic Range (WDR), Electronic Image Stabilization, and DeFog deliver a consistent image regardless of environmental conditions.

Camera Type	POE PTZ - IP High Definition
Lens	129.0mm - 4.3mm
Image Sensor	1/2.8" Exmor CMOS 2.14 Megapixel
Resolution	1080p x 720p
Optical Zoom / Digital Zoom	30x / 12x
Low Light	High Mode On: 0.00013 lux High Mode Off: 0.0008 lux
Pan & Tilt	360° continuous pan and tilt
Ingress Protection	IP68 - Waterproof
Camera Warranty	2 years



WTI

VIDEO CAMERAS

ANALOG IR ALUMINUM SHELL SIDE CCD CAMERA AVAILABLE IN NARROW OR WIDE VIEWING ANGLE

The stationary analog IR video camera uses infrared (IR) technology to capture video in low-light or no-light conditions. They are often used in security applications where reliable, continuous monitoring is required. The aluminum shell side CCD Camera is designed to be mounted on the side of a building or vehicle. Available with a narrow or wide viewing angle, the analog IR camera provides a clear view of the emergency scene and ground personnel, enhancing safety and convenience.



Camera Type	Analog
Lens	8mm / 2.8 mm
Image Sensor	Sharp CCD
Resolution	510 x 492 / 420 TV lines
Optical Zoom / Digital Zoom	Fixed
Low Light	0 LUX with 10 IR LED's
Pan & Tilt	No
Ingress Protection	IP67 - Waterproof
Camera Warranty	1 years

DVR WITH QUAD LCD MONITOR 7" QUAD SCREEN DVR COLOR LCD MONITOR

Will-Burt's DVR with Quad LCD Monitor provides standard definition recording and video quality. This Microsoft Windows based system is ideal for recording events that do not require watermarking and encryption. This combination unit is a convenient and cost effective solution for viewing and recording a variety of events from up to 4 cameras.



Display Resolution [H x V]	800 x 480 pixels [RGB]
Card Storage	Up to 32GB SD
Video Input	4-channel 1.0Vp-p, 75Ω
DVR Video Resolution	800 x 600 / 720 x 480 / 640 x 480 / 320 x 240
DVR Video Frame	20fps at 800 x 600 30fps at 720 x 480 30fps at 640 x 480 60fps at 320 x 240 pixels

VIDEO CAMERA CONTROLLERS



PELCO-D COMPATIBLE CONTROLLER WITH LED SCREEN

Works with PositionIt Positioner AND Compatible Camera Systems

The Pelco-D compatible handheld controller with LED screen has all of the features necessary to optimize the performance of the PositionIt positioner. Precision joystick controller flawlessly controls the pan and tilt functions. Includes LED screen, keyboard and programmable presets that simplify operation. The positioner handheld controller can also be optionally used in conjunction with the pan and tilt positioner controller.

Input Voltage	12 VDC
Communication Interface	RS485
Operating Temperature [°F / °C]	15 - 131 / 0 - 55
Dimensions [in. / mm]	6.2 x 5.9 x 4.2 / 158 x 150 x 107

IP COMPATIBLE CONTROLLER WITH LED SCREEN

Works with IP POE Cameras Using ONVIF Protocol

Input Voltage	12 VDC
Communication Interface	ONVIF 2.4
Operating Temperature [°F / °C]	0 - 55 / 15 - 131
Dimensions [in. / mm]	6.2 x 5.9 x 4.2 / 158 x 150 x 107



WONWOO

WONWOO PTZ MINI CONTROLLER

Works with ALL Wonwoo Models

- 3-Axis joystick control of PTZ functions
- Preset position control [4 positions]
- IR ON / OFF button
- Fan & heater ON / OFF function
- Slave keyboard support

INTEGRATED VIDEO SYSTEMS

Will-Burt's video systems have been designed for integration into the wide variety of elevation and light tower solutions. Video solutions have been specifically designed for many industries such as Fire and First Responders, Broadcast, Security, Police, Towing, Oil and Gas, Mining and Construction. Will-Burt can also design custom packages to meet your unique requirements.



Night Scan®
Light Tower with Camera



Hurry Up
Portable, Pump Up Mast



GEROH KVK
Robust, Crank Mast



Inflexion™
Roof-Mount, Fold-Down Mast

INTEGRATED VIDEO SYSTEMS



Clark QT Series
Portable, Pump Up Mast



Night Scan®
Command Center Application

Night Scan® Powerlite Light Tower
with Viper PTZ Camera

CONTINUOUS ROTATION POSITIONIT®



PI-35 CR



PI-75 CR



PI-150 CR

POSITIONIT CONTINUOUS ROTATION PAN AND TILT POSITIONERS

for Mobile Applications

The PositionIt range of pan and tilt positioners are now available with **Continuous Rotation** panning operation. All PositionIt models include improved, next-generation control electronics and software while retaining the rugged reliability of the original PositionIt range. The updated PositionIt series is fully backwards compatible regarding connection points, electronics, and software with the previous generation. Improved motor control is assured with higher resolution speed control, slower minimum speeds, and user adjustable minimum speeds and speed ramps. The GUI for configuring and commissioning allows users to set and adjust many features that were originally factory set only. It also boasts many features such as the ability to receive positional feedback, set home position and limit stops and fault diagnostics.

- Designed, manufactured, and tested to excel in mobile applications
 - Hardened metal gears
 - MIL-STD 810 certified by independent laboratory
- Strong, lightweight construction
 - Die-cast aluminum housing
 - Stainless steel fasteners
- Regenerative Braking
 - On motor shaft
- New Graphical User Interface (GUI)
 - Greater level of control with user set features
 - Faster set-up
 - Positional feedback
- More precise than ever
 - Higher level of motor control
 - Greater positional accuracy
- Flexible Connection
 - Bottom or side
- Universal mounting plate
 - Suitable for most common payloads
- Pelco-D over RS-485 Communications
- Weather-proof
 - IP 68 Rated
- Long Operational Life
- Backwards compatible
- 2 Year warranty

POSITIONIT®



PI-12



PI-35



PI-75



PI-150

POSITIONIT PAN AND TILT POSITIONERS

for Mobile Applications



Specifications

PositionIt	PI-12	PI-35	PI-75	PI-150
Payload Capacity* [ft lb / Nm]	12 / 6	35 / 47	75 / 101	150 / 202
Overall Height [in. / mm]	8.9 / 225	9.7 / 246	11.32 / 287.7	11.32 / 287.7
Overall Width [in. / mm]	9.9 / 252	10.8 / 273	9.21 / 234	12.4 / 314
Overall Depth [in. / mm]	3.9 / 100	5.7 / 144	6.8 / 171	6.8 / 171
Weight [lb. / kg]	10 / 5	20 / 9	35 / 16	37 / 17
Operating Temperature [°F / °C]	-40 to 140 / -40 to 60	-40 to 140 / -40 to 60	-40 to 140 / -40 to 60	-40 to 140 / -40 to 60
IP Rating	IP68 – Waterproof	IP68 – Waterproof	IP68 – Waterproof	IP68 – Waterproof
Pan Axis	400° [± 200°]	400° [± 200°]	400° [± 200°]	400° [± 200°]
Pan Speed [proportional] [per second]	1 to 6°	1° to 12°	0.02° to 6.5°	0.02° to 6.5°
Tilt Axis	180° [± 90°]	180° [± 90°]	180° [± 90°]	180° [± 90°]
Tilt Speed [proportional] [per second]	1 to 6°	1° to 12°	0.02 to 5.5°	0.02 to 5.5°
Backlash	≤ 0.15°	≤ 0.15°	≤ 0.15°	≤ 0.15°
Repeatability	≤ 0.3°	≤ 0.3°	≤ 0.3°	≤ 0.3°
Maximum Continuous Power	44 W	44 W	44 W	44 W
Maximum Running Current	1.85 amps	1.85 amps	1.85 amps	1.85 amps
Input Voltage	24 VDC – Converters available for 12 VDC and AC power sources			

PositionIt Continuous Rotation	PI-35 CR	PI-75 CR	PI-150 CR
Payload Capacity* [ft lb / Nm]	35 / 47.45	75 / 101.68	150 / 203.37
Overall Height [in. / mm]	13.4 / 341	15.1 / 383.1	15.2 / 385.1
Overall Width [in. / mm]	10.7 / 273	11.3 / 287.02	14.6 / 370.84
Overall Depth [in. / mm]	6.1 / 154.9	7.19 / 182.67	7.19 / 182.67
Weight [lb. / kg]	25.57 / 11.6	41.45 / 18.8	46.52 / 21.1
Operating Temperature [°F / °C]	-40 to 140 / -40 to 60	-40 to 140 / -40 to 60	-40 to 140 / -40 to 60
Pan Degrees of Rotation [Continuous]	0° to 360°	0° to 360°	0° to 360°
Tilt Degrees of Rotation	+90° / -90°	+90° / -90°	+90° / -90°
Pan Speed [Proportional] [per second]	12°	6.5°	6.5°
Tilt Speed [Proportional] [per second]	12°	5.5°	5.5°
Backlash	≤ 0.15°	≤ 0.15°	≤ 0.15°
Repeatability	≤ 0.3°	≤ 0.3°	≤ 0.3°
Maximum Continuous Power	44 W	44 W	44 W
Maximum Continuous Current	1.85 amps	1.85 amps	1.85 amps
Input Voltage	24 VDC	24 VDC	24 VDC
Protocol	Pelco D used [Pelco P available]		
Ingress Protection Rating	IP68	IP68	IP68
Baud Rate	2,400 bps [Other Baud Rates Available]		

*Capacity measured at 12 inches or less from the tilt axis.
Dimensions and weights are for reference only and are subject to change. Contact Will-Burt for current engineering specifications.

Pin-Out & Flying Lead Assignment			
Pin No.	Wire Identification / Color	Assignment	Maximum Current
A	N/A	N/A	N/A
B	Red	+ ve	3 A
C	Black	- ve	3 A
D	Green	Ground	1 A [24 AWG]
E	White/Brown	AUX Data	1 A [24 AWG]
F	Brown	AUX Data	1 A [24 AWG]
G	White/Yellow	Data B	N/A
H	Yellow	Data A	N/A
J	White/Blue	AUX Data	1 A [24 AWG]
K	N/A	N/A	N/A
L	COAX [RG179]	COAX [RG179-75 Ohm]	N/A
M	Blue	AUX Data	1 A [24 AWG]

Cable Assembly Specification	
Connector Type	Circular Connector, 12 Way
Cable Type	10 Core Composite Cable
Voltage Rating	24v
Max Current Rating	3A
Temperature Range [°F / °C]	-40 to +80
Ingress Protection	IP68 Connector

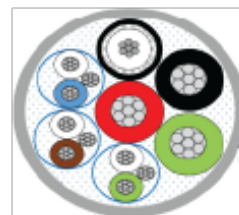


Image to show twisted pair data cables for clarity with pin-out table



Connector Face

HANDHELD CONTROLLER

The Pelco-D compatible handheld controller with LED screen has all of the features necessary to optimize the performance of the Positionit positioner. The precision 4D joystick controller flawlessly controls the pan and tilt functions. Includes LED screen, keyboard and programmable presets that simplify operation. The positioner handheld controller can also be optionally used in conjunction with the pan and tilt positioner controller.



Input Voltage	12V DC
Communication Interface	RS485
Operating Temperature [°F / °C]	15 - 131 / 0 - 55
Dimensions [L x W x H] [in. / mm]	6.2 x 5.9 x 4.2 / 158 x 150 x 107

POSITIONIT CONTROLLERS

Handheld Controller | Rack Mount Controller

RACK MOUNT CONTROLLER

The 19-inch [2U] Rack Mount Positioner Controller from Will-Burt is loaded with new features. You will always know the status of the positioner with real-time positional, speed, and status feedback. Control multiple positioners and third-party equipment with a single controller. This controller is optimized for positioners with stow and deploy buttons located on the front panel.



The latest Positioner Controller from Will-Burt will simplify deployment and operation of communications and video equipment.

- LCD Home Screen displays real-time positioner information
- LCD Selector Menu provides additional control functionality
- Control third-party equipment through [7] digital discrete outputs with USB and RS-485 inputs
- Control multiple positioners in single system through address selection
- Positioner control with front panel directional push buttons and configurable 'Stow' & 'Unstow' presets
- Pelco-D over RS-485 half-duplex output to positioner
- 100-240VAC input voltage with 24VDC output voltage to positioner

Input Voltage	100-240VAC
Output Voltage	24VDC
Communication Interface	Pelco-D over RS-485 half-duplex at 2400 bps
Operating Temperature [°F / °C]	32 to 122 / 0 to 50
Dimensions [in. / cm]	19 x 3.5 x 11.7 / 48.26 x 8.81 x 29
Weight [lb. / kg]	6.6 / 3



CONTINUOUS ROTATION AccuPoint®



AP CR-8



AP CR-30



AP CR-50

ACCUPOINT CONTINUOUS ROTATION POSITIONERS

for Static Applications

The AccuPoint Continuous Rotation range of positioners for static mount applications, maintaining everything that was great about the AccuPoint range but now with Continuous Rotation capability. The AccuPoint Continuous Rotation Range utilizes a high-quality slip ring with RG179 75 Ohm COAX compatibility. The AccuPoint Continuous Rotation positioners provide high positional accuracy and are easier to use than ever. With a greater level of motor control, your surveillance capability will be at its highest and antenna accuracy will be precise. Supplied with a simple graphic interface (GUI), it is now easier to configure allowing faster installation times and more capabilities to fulfill your specifications. Know the exact pointing location of your device with positional feedback and adjust it easily to the direction needed.

Improved motor control is assured with higher resolution speed control, slower minimum speeds, and user adjustable minimum speeds and speed ramps. The new GUI for configuring and commissioning allows users to set home positions, receive position feedback, and adjust many other features that were originally factory set standards. Rugged and robust as ever before, AccuPoint can withstand the harshest weather conditions.

Available in three sizes, all units can be configured for over-the-top or side mount operation.

- Continuous Rotation pan operation.
- High Quality slipring with 3G-SDI video transmission capability.
- Backwards compatible
- Greater level of control with user set features
- Faster setup
- Higher level of motor control and greater positional accuracy
- Positional feedback
- Rugged and robust
- Pelco D over RS485 Communications
- IP68 Rated
- 3-year warranty

Specifications

Model	AP CR-8	AP CR-30	AP CR-50
Mounting Option	Over The Top	Over The Top	Over the Top
Height [Standard] [in. / mm]	15.0 / 381.6	13.4 / 341.2	11.2 / 283.5
Platform Width [in. / mm]	9.2 / 234	7.8 / 197	5.8 / 147
Total Width [in. / mm]	9.6 / 243.6	8.2 / 207.5	6.2 / 158
Depth [without plugs] [in. / mm]	7.1 / 179	5.9 / 151	5 / 129
Weight [lb. / kg]	38.6 / 17.5	21.9 / 9.9	7.5 / 3.4
Voltages	24 VDC - Converters available for 12 VDC and AC power sources		
Pan Gear Box Speed [Max] [per second]	30°	48°	24°
Tilt Gear Box Speed [Max] [per second]	10°	12°	6°
Capacity [ft-lb]	50	30	8
Pan Range	Continuous	Continuous	Continuous
Tilt Range	+90° / -45°	+90° / -45°	+90° / -45°
Backlash	≤ 0.15°	≤ 0.15°	≤ 0.15°
Repeatability	≤ 0.3°	≤ 0.3°	≤ 0.3°
Ingress Protection	IP68	IP68	IP68
Temperature Range [°F / °C]	-40 to 140 / -40 to +60	-40 to 140 / -40 to +60	-40 to 140 / -40 to +60
Maximum Continuous Power	44 W	44 W	44 W
Max Current Draw	1.85 amps	1.85 amps	1.85 amps
Protocol	RS485 / Pelco D	RS485 / Pelco D	RS485 / Pelco D
Absolute Positioning	Yes	Yes	Yes
Positional Feedback	Yes	Yes	Yes
Application	Static Mount	Static Mount	Static Mount
Housing Color	Grey	Grey	Grey
Addresses	User Set via GUI	User Set via GUI	User Set via GUI

Pin-Out & Flying Lead Assignment

Pin No.	Wire Identification / Color	Assignment	Maximum Current
A	N/A	N/A	N/A
B	Red	+ ve	3 A
C	Black	- ve	3 A
D	Green	Ground	1 A [24 AWG]
E	White/Brown	AUX Data	1 A [24 AWG]
F	Brown	AUX Data	1 A [24 AWG]
G	White/Yellow	Data B	N/A
H	Yellow	Data A	N/A
J	White/Blue	AUX Data	1 A [24 AWG]
K	N/A	N/A	N/A
L	COAX [RG179]	COAX [RG179-75 Ohm]	N/A
M	Blue	AUX Data	1 A [24 AWG]

Cable Assembly Specification

Connector Type	Circular Connector, 12 Way
Cable Type	10 Core Composite Cable
Voltage Rating	24v
Max Current Rating	3A
Temperature Range [°F / °C]	-40 to +80
Ingress Protection	IP68 Connector

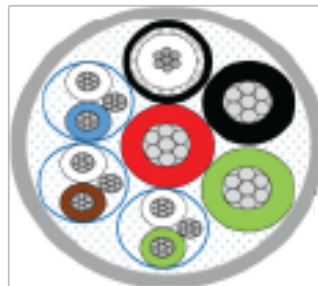
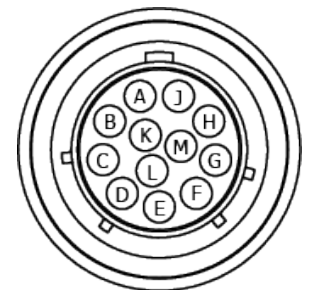


Image to show twisted pair data cables for clarity with pin-out table



Connector Face

AccuPOINT®



AP-8



AP-30



AP-50

ACCUPOINT OVER-THE-TOP & SIDE MOUNT POSITIONERS for Static Applications

The AccuPoint range of positioners, retaining everything that was great about the original static mounted range but now includes our improved next generation control electronics.

The AccuPoint series is dimensionally and electrically identical to the first generation of Will-Burt positioners with backwards compatible software. Improved motor control is assured with higher resolution speed control, slower minimum speeds, and user adjustable min speeds and speed amps. The new GUI for configuring and commissioning allows users to set home positions, receive position feedback, and adjust many other features that were originally factory set standards. Rugged and robust as ever before, AccuPoint can withstand the harshest weather conditions.

- Backwards compatible
- Greater level of control with user set features
- Higher level of motor control and greater positional accuracy
- Faster setup
- Positional feedback
- Rugged and robust
- Pelco D over RS485 Communications
- IP68 Rated
- 3 year warranty



AccuPOINT®



AP-8



AP-30



AP-50

Model	AP-8		AP-30		AP-50	
	Side Mount	Over the Top	Side Mount	Over the Top	Side Mount	Over the Top
Height [Standard] [in. / mm]	5.2 / 131	5.8 / 146.2	7.4 / 187	8 / 204	9.3 / 235.1	9.8 / 248.1
Platform Width [in. / mm]	6.4 / 162.1	5.8 / 147	7 / 178.7	7.8 / 197	7 / 177.2	9.2 / 234
Total Width [in. / mm]	12.2 / 309.5	6.2 / 158.1	14.6 / 369.8	8.2 / 207.5	15.8 / 400.9	9.6 / 243.6
Depth [without plugs] [in. / mm]	5.2 / 132	5 / 127	6 / 152.8	5.9 / 149.64	7 / 177	7 / 177
Weight [lb. / kg]	< 5.5 / 2.5	< 5.07 / 2.3	< 14.55 / 6.6	< 14.7 / 6.7	< 27.4 / 12.45	< 29.7 / 13.5
Voltages	24 VDC – Converters available for 12 VDC and AC power sources					
Pan Gear Box Speed [Max]	24°/sec		48°/sec		30°/sec	
Tilt Gear Box Speed [Max]	6°/sec		12°/sec		10°/sec	
Capacity [ft-lb]	8		30		50	
Pan Range	±180°		±180°		±180°	
Tilt Range	±90°	+90° / -45°	±90°	+90° / -45°	±90°	+90° / -45°
Backlash	0.15°		0.15°		0.15°	
Repeatability	< 0.3°		0.3°		< 0.3°	
Ingress Protection	IP68		IP68		IP68	
Temperature Range [°F / °C]	-4 to 122 / -20 +50		-4 to 122 / -20 +50		-4 to 122 / -20 +50	
Max Current Draw	0.85 A		1.85 A		1.85 A	
Protocol	RS485 / Pelco D		RS485 / Pelco D		RS485 / Pelco D	
Absolute Positioning	Yes		Yes		Yes	
Positional Feedback	Yes		Yes		Yes	
Application	Static Mount		Static Mount		Static Mount	
Housing Color	Grey		Grey		Grey	
Addresses	User Set via GUI		User Set via GUI		User Set via GUI	

CONTACT YOUR SALES REPRESENTATIVE TODAY



Contact Us
Complete a Contact Form

WILL-BURT NORTH AMERICA
WORLD HEADQUARTERS

401 Collins Boulevard, Orrville, OH 44667 USA
Telephone: +1 330 682 7015
Mast Customer Service: +1 330 684 4000
Fax: +1 330 684 1190
Email: info@willburt.com

WILL-BURT
UNITED KINGDOM

Unit 5b, Station Approach, Four Marks,
Alton Hampshire, GU34 5HN, United Kingdom
Telephone: +44 (0) 1403 265532
Fax: +44 (0) 1403 259072
Email: info@willburt.com

WILL-BURT INTEGRATION
ALUMA TOWER | ITS

7750 9th Street SW
Vero Beach, FL 32968 USA
Telephone: +1 772 567 3423 | +1 800 850 8535
Fax: +1 772 567 3432
Aluma Tower Email: info@alumatower.com
ITS Email: programs@itstowers.com

WILL-BURT ASIA
SINGAPORE SALES OFFICE

1 Fullerton Road, #02-01
One Fullerton, Singapore 049213
Telephone: +65 6832 5689
Fax: +65 6722 0664
Email: info@willburt.com

WILL-BURT
GERMANY

Fischerergasse 25
D-91344 Waischenfeld, Germany
Telephone: +49 9202 180
Fax: +49 9202 1811
Email: info@willburt.com

CLARK MASTS
A WILL-BURT COMPANY

18-20 Ringwood Road, Binstead,
Isle of Wight, PO33 3PA, England
Telephone: +44 (0) 1983 563691/567090
Fax: +44 (0) 1983 566643/811157
E-mail: sales@clarkmasts.com

The Will-Burt Company, headquartered in Orrville, Ohio, USA, is the world's premier manufacturer of mobile telescoping masts, towers and pan and tilt positioners. We offer virtually every mobile payload elevation and integration solution for defense, government, first responders, cellular and mobile, broadcast, energy production and other markets. Will-Burt also offers contract manufacturing, metal fabrication, powder-coating, and rapid prototyping services. Will-Burt is an international company with offices and manufacturing in the USA, England, and Germany along with offices in Singapore. All Will-Burt Company manufacturing locations are backed by a certified ISO 9001:2015 Quality Management System. Incorporated in 1918, Will-Burt is 100% employee-owned and is classified as a small business.

*Disclaimer: Dimensions and weights are for reference only and are subject to change.
Please contact Will-Burt for current engineering specifications.*



Will-Burt Terms and Conditions of Sale:
<https://www.willburt.com/support/service/will-burt-terms-conditions-of-sale/>

© February, 2026
The Will-Burt Company
ISO 9001:2015
INNOVATION ELEVATED®