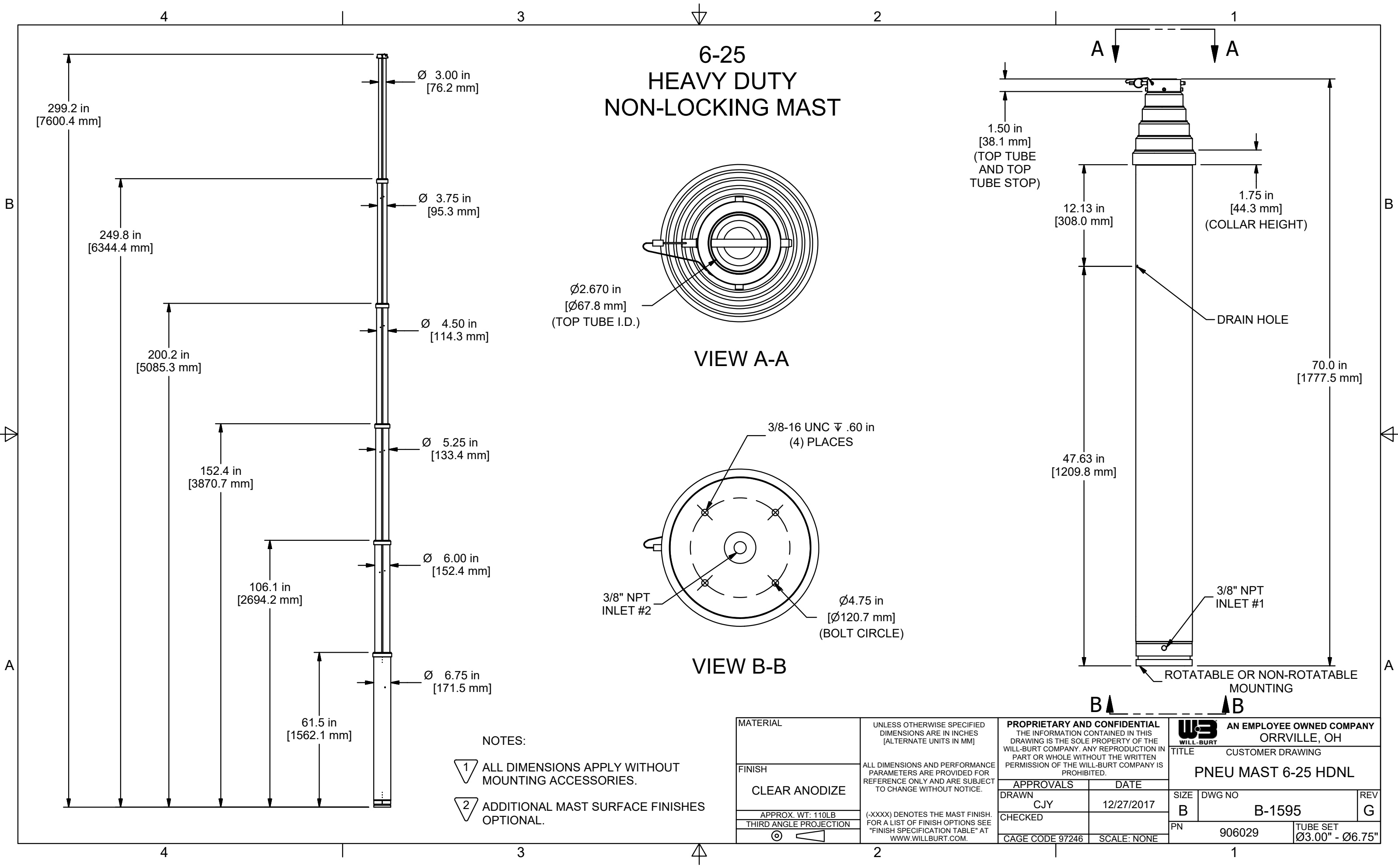


6-25 HEAVY DUTY NON-LOCKING MAST



- NOTES:
- 1 ALL DIMENSIONS APPLY WITHOUT MOUNTING ACCESSORIES.
 - 2 ADDITIONAL MAST SURFACE FINISHES OPTIONAL.

MATERIAL	UNLESS OTHERWISE SPECIFIED DIMENSIONS ARE IN INCHES [ALTERNATE UNITS IN MM]	PROPRIETARY AND CONFIDENTIAL THE INFORMATION CONTAINED IN THIS DRAWING IS THE SOLE PROPERTY OF THE WILL-BURT COMPANY. ANY REPRODUCTION IN PART OR WHOLE WITHOUT THE WRITTEN PERMISSION OF THE WILL-BURT COMPANY IS PROHIBITED.		AN EMPLOYEE OWNED COMPANY ORRVILLE, OH	
FINISH	ALL DIMENSIONS AND PERFORMANCE PARAMETERS ARE PROVIDED FOR REFERENCE ONLY AND ARE SUBJECT TO CHANGE WITHOUT NOTICE.	APPROVALS	DATE	TITLE CUSTOMER DRAWING	
CLEAR ANODIZE	(-XXXX) DENOTES THE MAST FINISH. FOR A LIST OF FINISH OPTIONS SEE "FINISH SPECIFICATION TABLE" AT WWW.WILLBURT.COM.	DRAWN CJY	12/27/2017	SIZE B	DWG NO B-1595
APPROX. WT: 110LB		CHECKED		PN 906029	REV G
THIRD ANGLE PROJECTION		CAGE CODE 97246	SCALE: NONE	TUBE SET Ø3.00" - Ø6.75"	