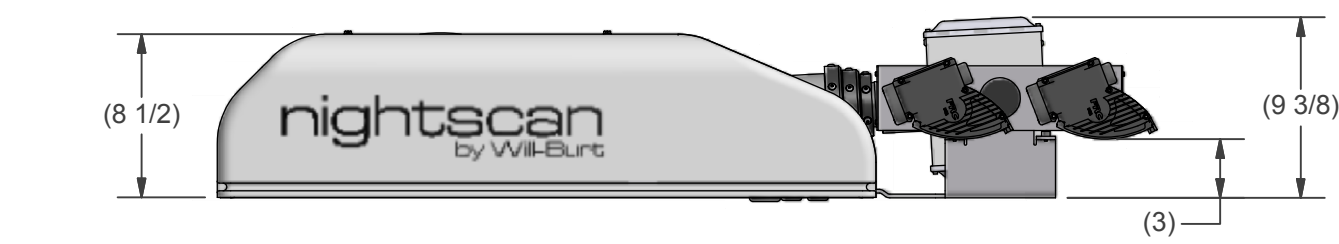
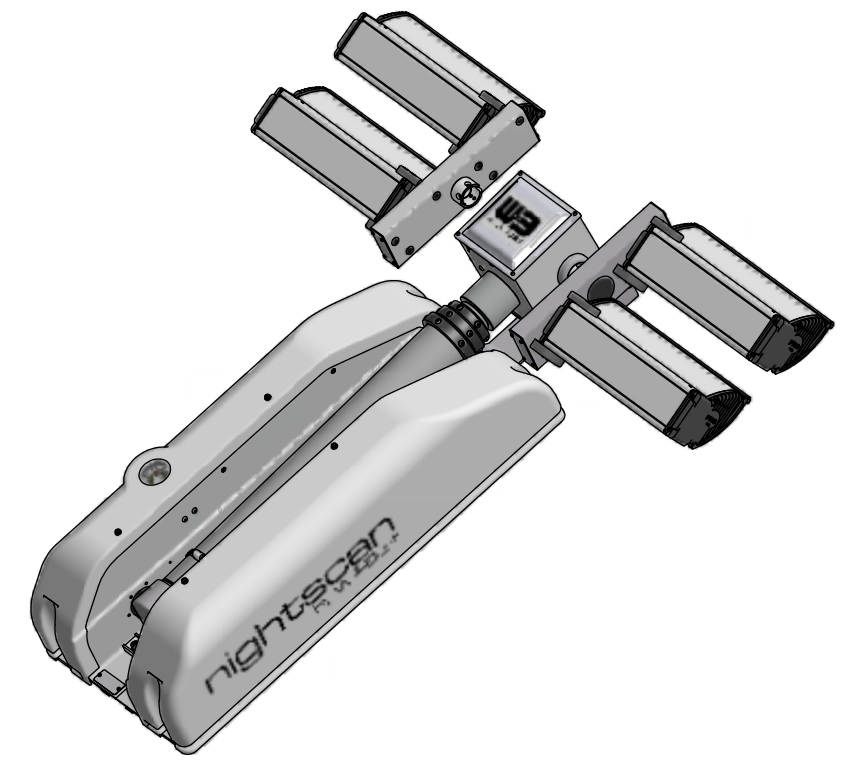
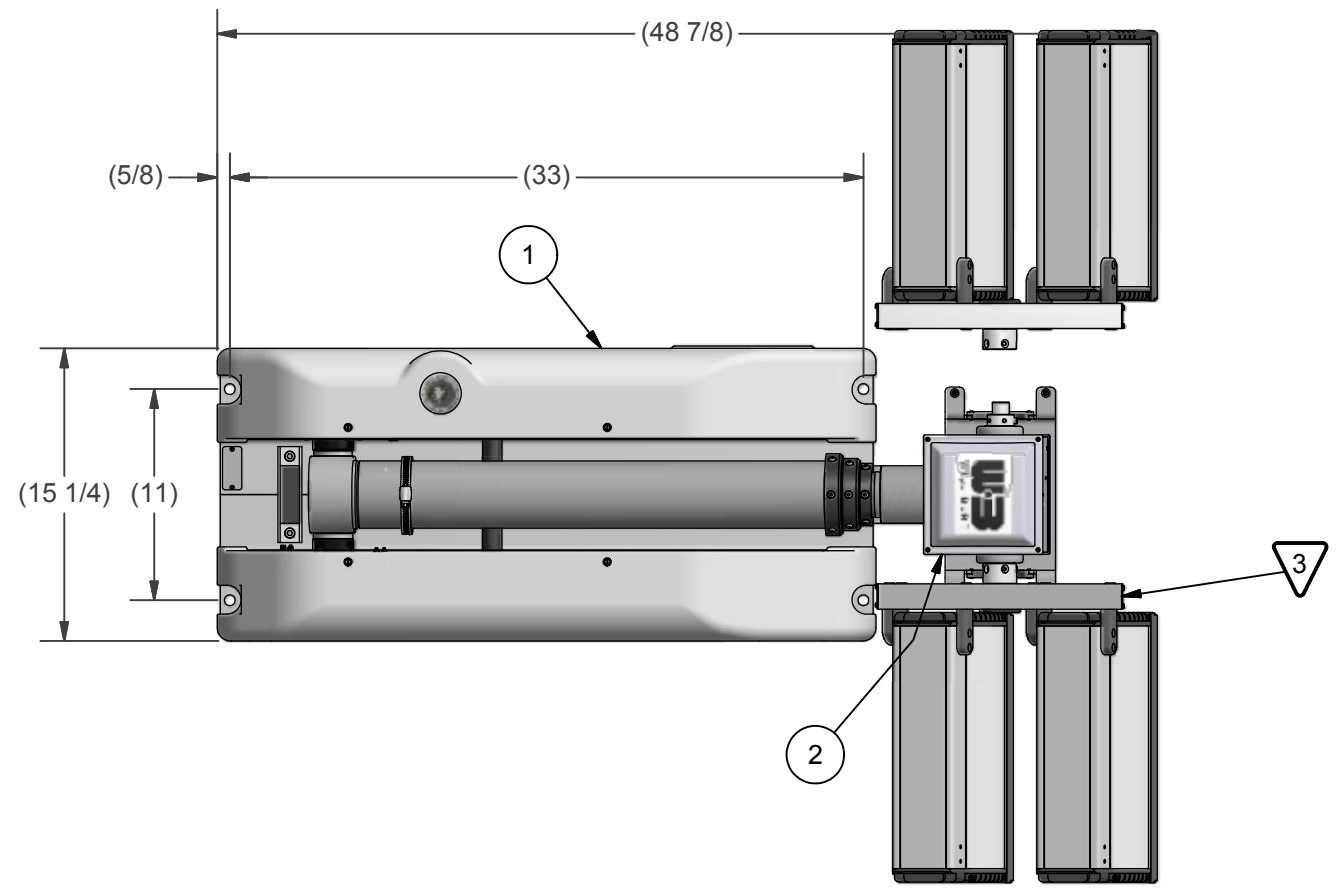


REVISION HISTORY				
ECN	REV	DESCRIPTION	DATE	BY/APPR
10546	R	OBSOLETE	6/3/2011	
11901	S	RESTRUCTURED BOM - Remove Obsolete Status	11/25/2013	RCC
12580	T	CHANGED NOTE TWO TO REFERENCE DRAWING WD-46276	3/31/2015	KWBH



BOM			
ITEM	QTY	PART NUMBER	DESCRIPTION
1	1	4522003	NSC BASE ASSEMBLY 6.0 WHITE
2	1	4548301	NSC RCP, LIGHTS ONLY
3	1	4574607	OPT 4 LIGHT, 4000W (4-1000 220VAC) WHT
4	1	4558901	NSC LABEL KIT (NOT SHOWN)
5	1	TP-4602001	MANUAL, NS 1.8/2.3, CE, CD VERSION (NOT SHOWN)
6	1	4584001	FILLER, CORRUGATED NSC (NOT SHOWN)

UNLESS OTHERWISE SPECIFIED DIMENSIONS ARE IN INCHES.

TOLERANCES ON DECIMALS    ANGLES  
0 = ± 0.030                      ± 1/2°  
00 = ± 0.010  
000 = ± 0.005

FRACTIONAL ± 1/64"  
1. ALL INSIDE EDGES TO HAVE .005" TO .035" FILLETS.  
2. ALL OUTSIDE EDGES TO HAVE .005" TO .015" CHAMFER OR RADIUS.

125° ON ALL MACHINED SURFACES

**PROPRIETARY AND CONFIDENTIAL**  
THE INFORMATION CONTAINED IN THIS DRAWING IS THE SOLE PROPERTY OF THE WILL-BURT COMPANY ANY REPRODUCTION IN PART OR WHOLE WITHOUT THE WRITTEN PERMISSION OF THE WILL-BURT COMPANY IS PROHIBITED.



TITLE  
**NS 1.8-4000-4 OPT 220V WHITE**

APPROVALS	DATE
DRAWN RCC	11/25/2013
CHECKED	

SIZE B	DWG NO 720663040	REV T
PN: 720663040	SHEET 1 OF 1	

APPROX. WT:N/A

THIRD ANGLE PROJECTION

- NOTES:
- 1 APPLY RTV #739 OR EQUAL TO ALL OPEN HOLES.
  - 2 SEE WIRING DIAGRAM WD-46276 FOR ALL UNITS.
  - 3 SET LIGHT BARS HOME POSITION PARALLEL TO BASE PLATE WHEN STOWED.